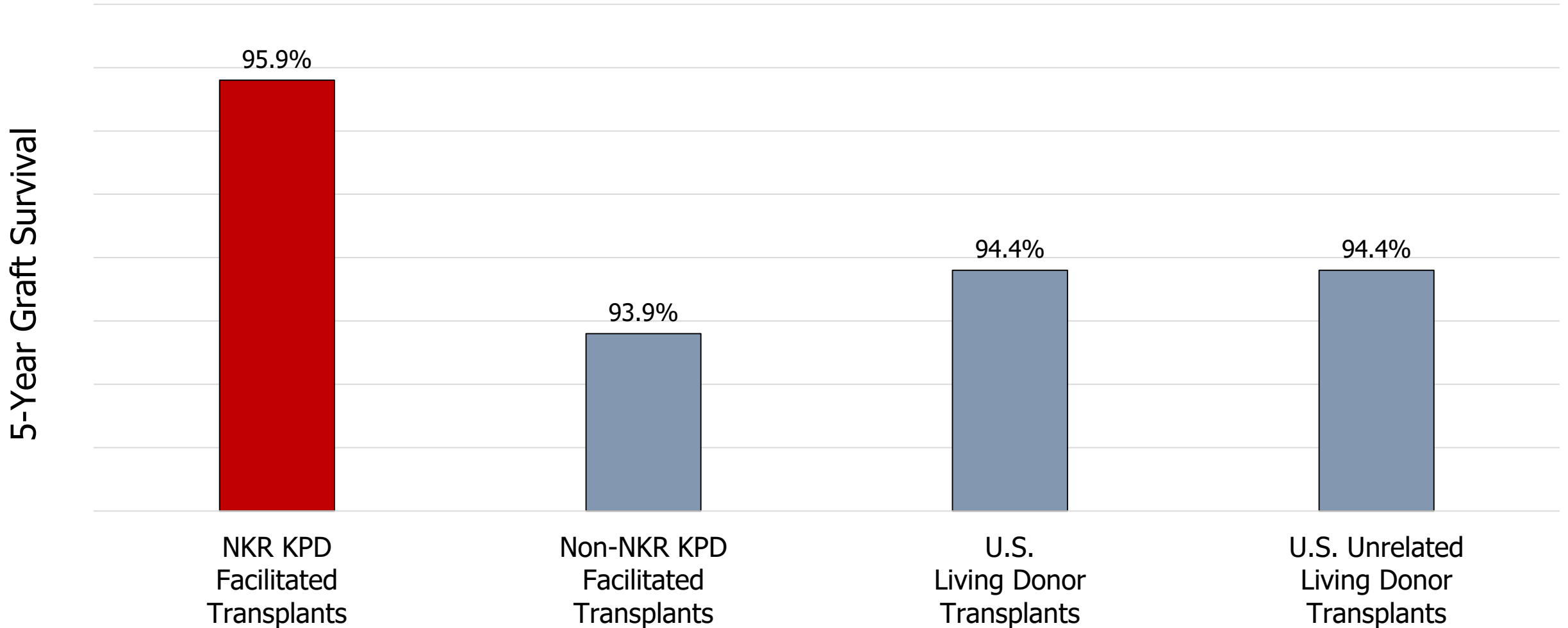


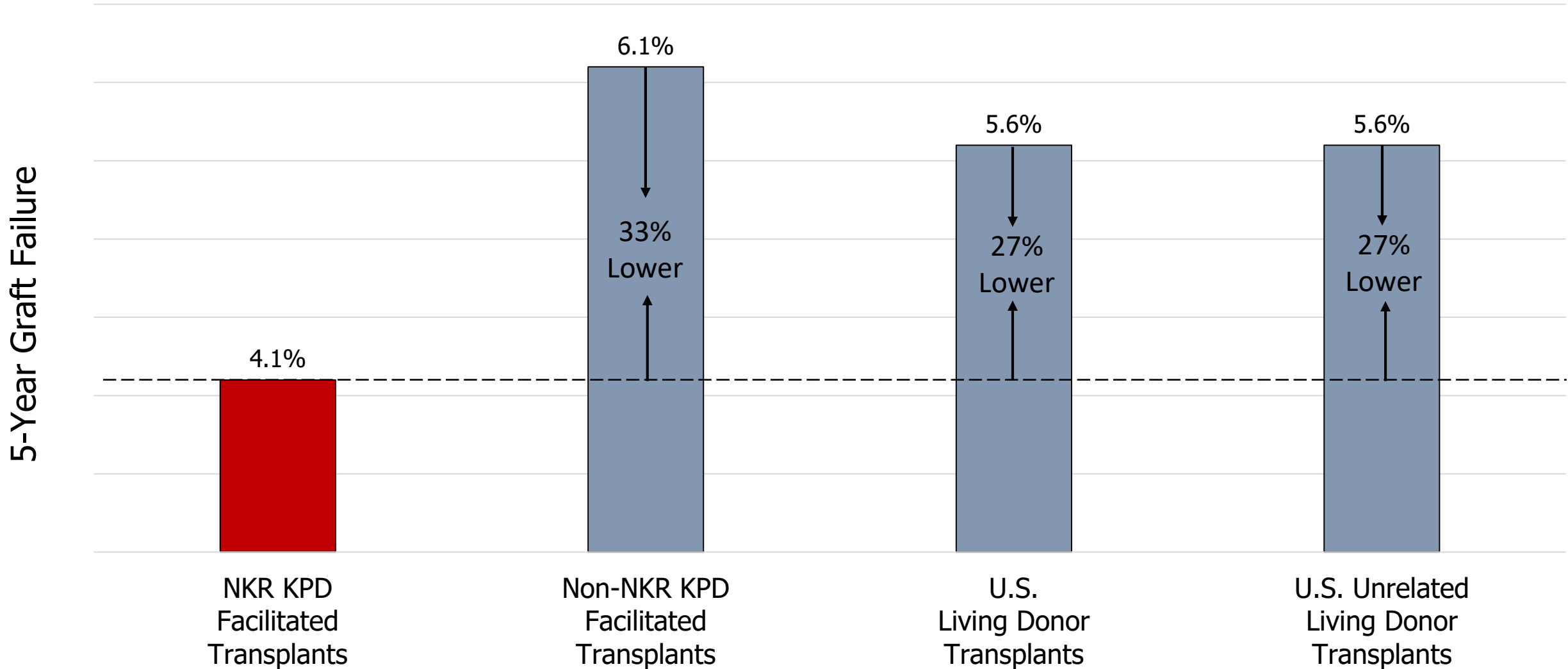
Superior Kidney Transplant Outcomes

NKR Facilitated Transplants

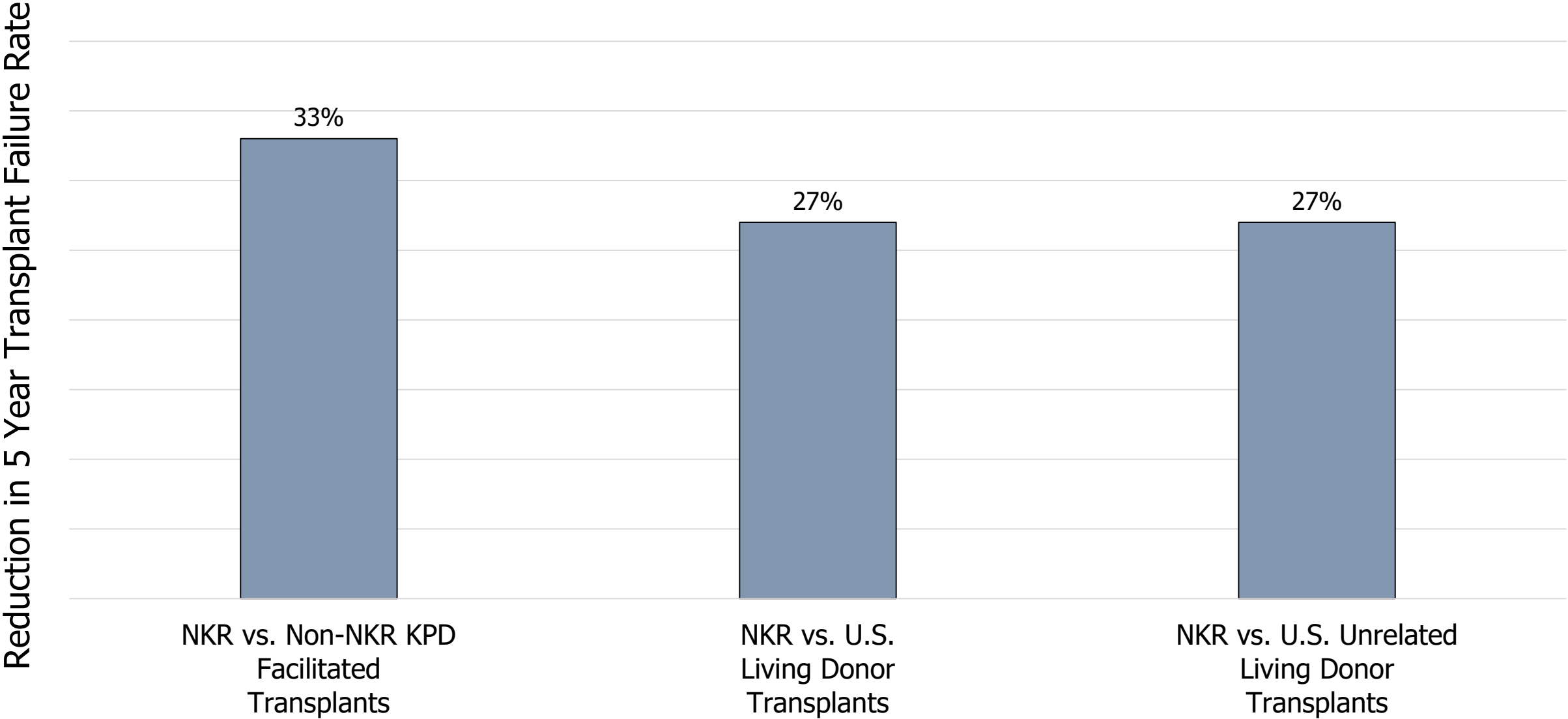
Statistically Significant (P=.01)



NKR Advantage: Lower Transplant Failure Rate



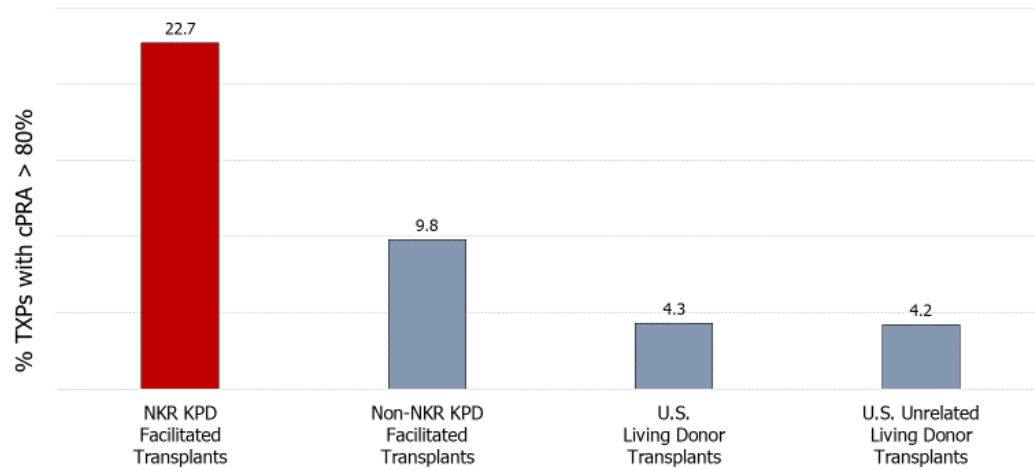
NKR Advantage: Lower Transplant Failure Rate



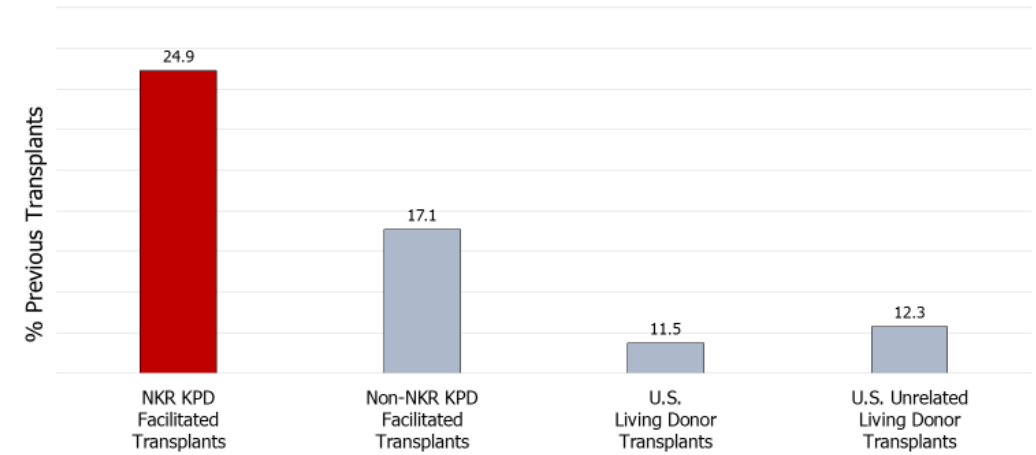
Source: Flechner, et al. (2018-04-30). "The first 9 years of kidney paired donation through the National Kidney Registry: Characteristics of donors and recipients compared with National Live Donor Transplant Registries". *American Journal of Transplantation*. 18 (11): 2730–2738.

Better Outcomes Despite Harder Cases

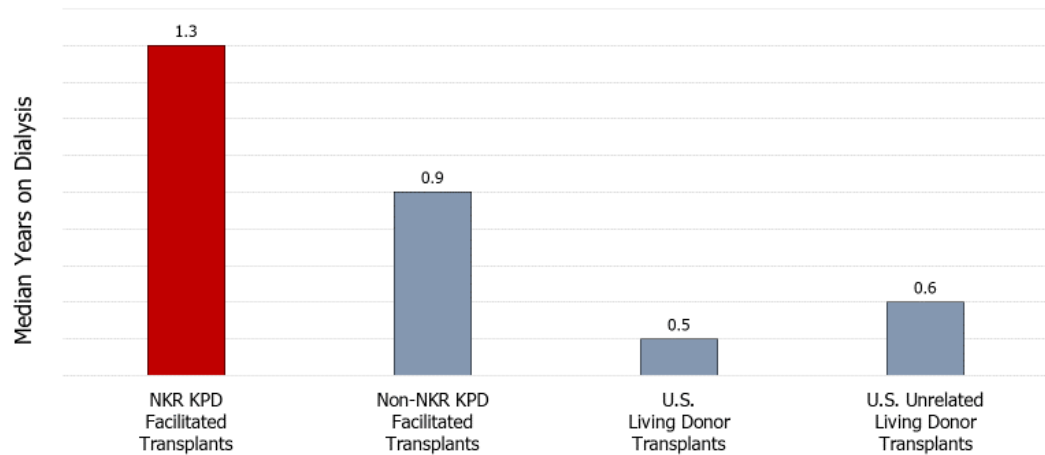
More Highly Sensitized Patients



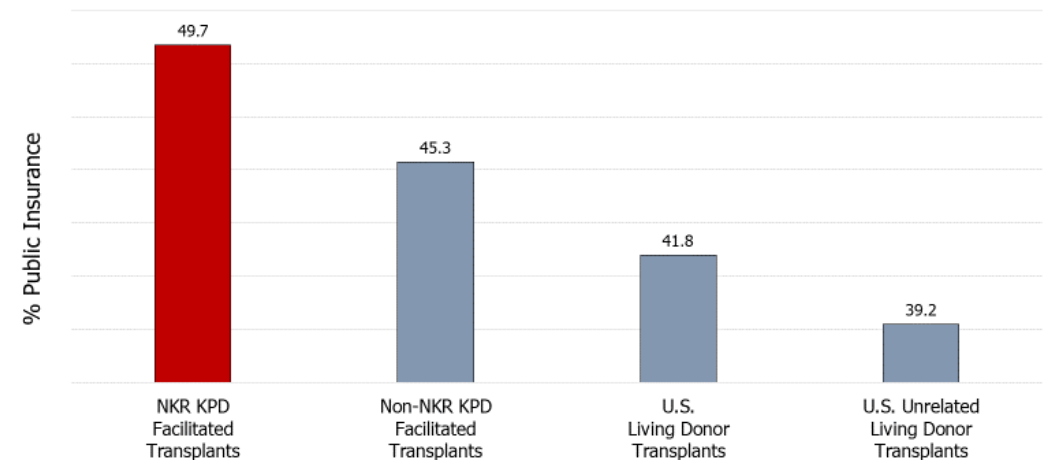
More Re-Transplants



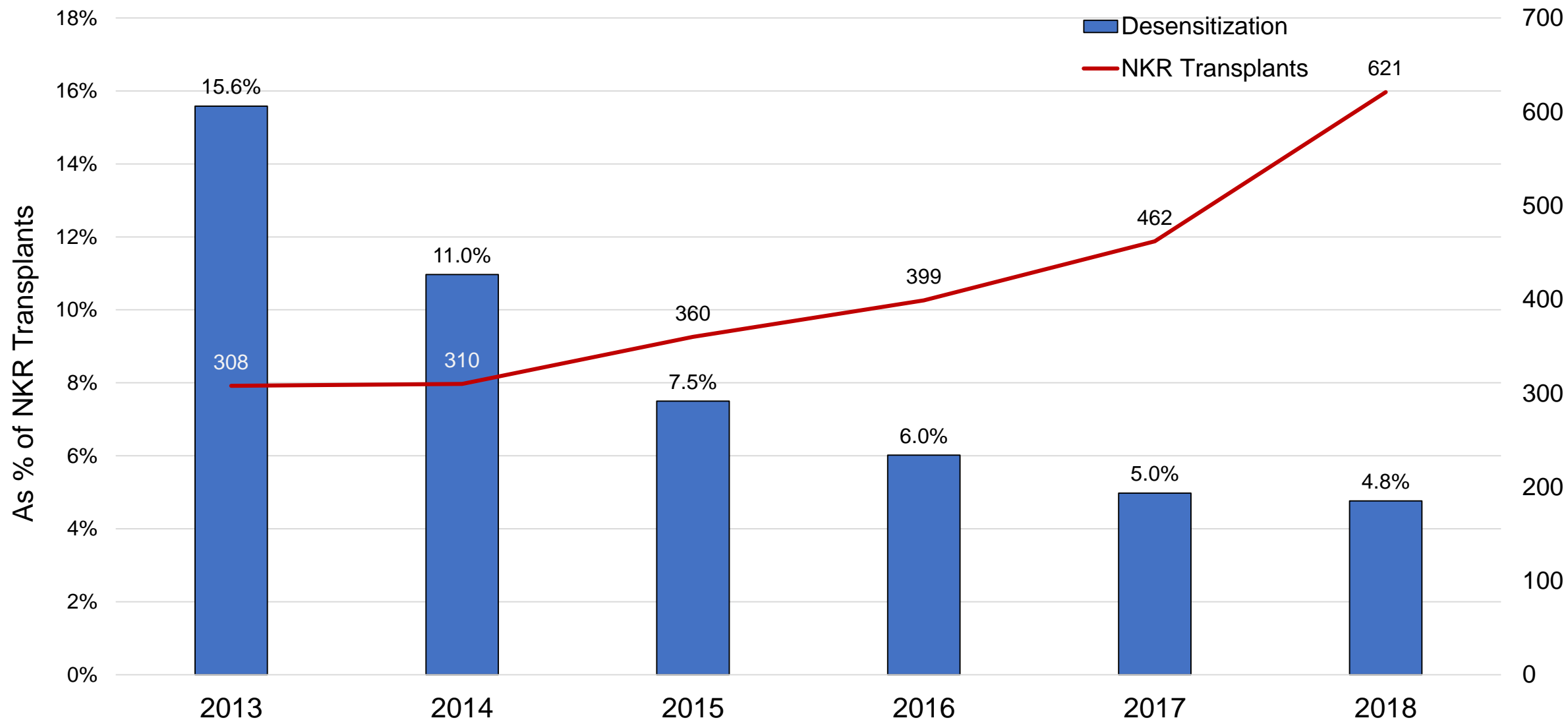
More Time on Dialysis



More Patients with Public Insurance



Better Matches = Less Desensitization = Better Outcomes



Provided courtesy of Johns Hopkins University School of Medicine, Department of Surgery *Not including CHIP patients;
Kaplan-Meier GS Rates for Transplants Performed: 02/2008-06/2017 with follow-up through 12/31/2017 <https://www.srtr.org/SRTR> data as of June, 2018

Better HLA Matches = Better Outcomes

NKR vs Unrelated LD TXPs

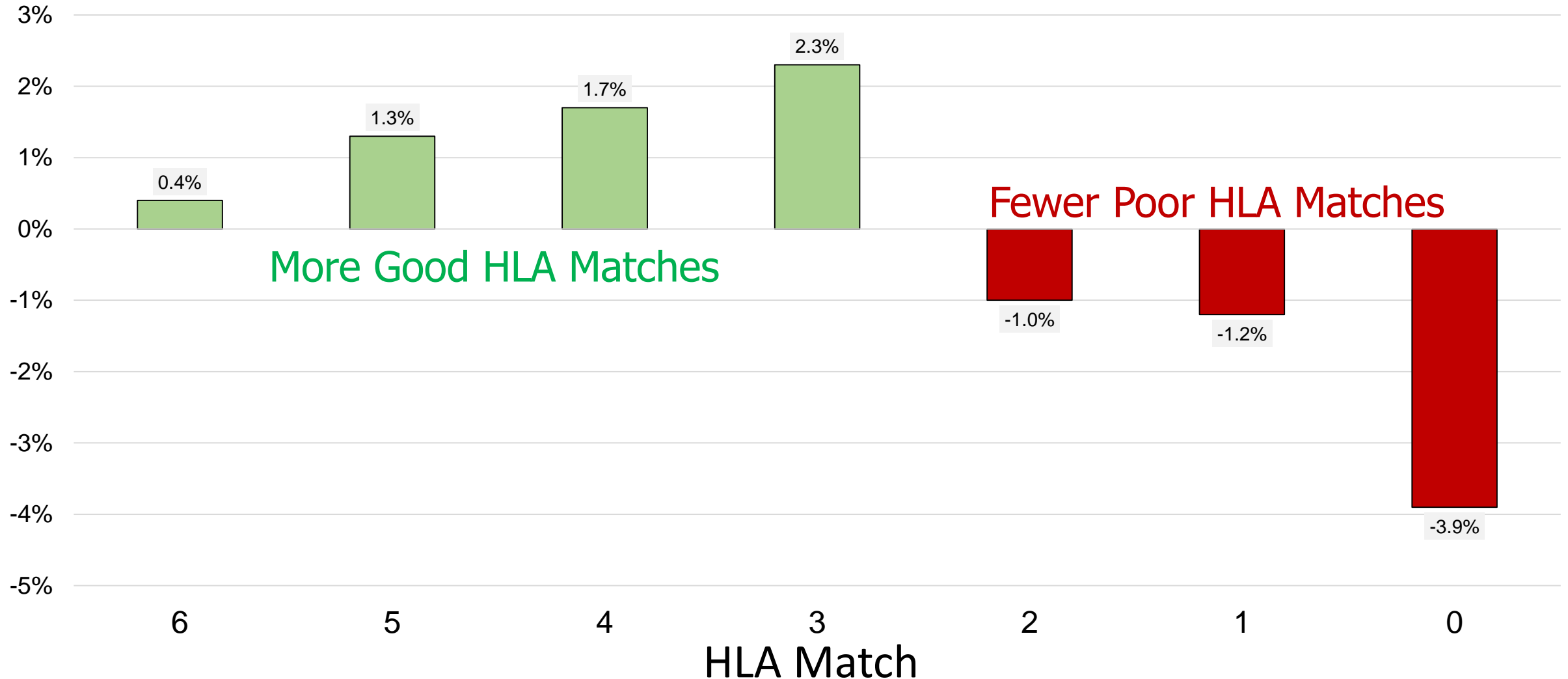


TABLE 2 Recipient and donor characteristics

	NKR	All UNOS non-NKR living donor transplants	P value	All UNOS non-NKR living unrelated donor transplants	P value	All UNOS non-NKR KPD living donor transplants	P value
Recipient characteristics							
N	2037	49 610		23 319		4236	
Median (IQR) age, y	50.0 (39.0-60.0)	49.0 (36.0-59.0)	<.001	50.0 (40.0-59.0)	.5	50.0 (39.0-59.0)	.2
Female, %	45.9	37.6	<.001	34.7	<.001	42.7	<.02
White, %	60.8	66.3	<.001	70.8	<.001	67.6	<.001
African American, %	18.2	13	<.001	11.7	<.001	13.4	<.001
Hispanic, %	11.5	14.7	<.001	11.5	1.0	12.4	.3
Asian, %	8.4	4.7	<.001	4.7	<.001	4.7	<.001
Other, %	1.1	1.3	.4	1.3	.4	1.6	.1
Previous transplant, %	25.6	11.5	<.001	12.3	<.001	17.1	<.001
Preemptive transplant, %	35.8	35.1	<.001	35.3	<.001	27.8	<.01
Median (IQR) years on dialysis	1.3 (0.0-2.9)	0.5 (0.0-1.6)	<.001	0.6 (0.0-1.7)	<.001	0.9 (0.0-2.3)	<.001
Median (IQR) BMI, kg/m ²	26.6 (23.3-31.0)	27.1 (23.5-31.4)	.01	27.5 (23.9-31.7)	<.001	27.4 (23.7-31.7)	<.001
College educated, %	64.3	59.6	<.001	65.2	.4	63.1	.4
Employed, %	44.3	48.6	<.001	52.3	<.001	46.4	.1
Public insurance, %	49.7	41.8	<.001	39.2	<.001	45.3	<.01
Diabetes, %	19	20.4	.1	21.1	.03	20.3	.2
Hypertension, %	15.8	16.1	.7	15.3	.6	15.9	.9
Hepatitis C virus infection, %	2.3	2.2	.8	2.2	.7	2.2	.8
Donor characteristics							
Median (IQR) age, y	45.0 (35.0-53.0)	42.0 (33.0-51.0)	<.001	45.0 (35.0-53.0)	.5	44.0 (34.0-52.0)	<.01
Female, %	62.3	62.1	.9	65.4	<.01	61.8	.7
African American, %	10.5	11.1	.4	7.7	<.001	7.5	<.001
Hispanic, %	10.1	14.4	<.001	10.5	.6	10.1	1.0
ABO incompatible, %	2.2	1.6	.04	1.8	.3	2.2	.9
0 HLA mismatch, %	0.8	7.3	<.001	0.4	.02	0.8	1
Median (IQR) cold ischemia, h	8.7 (5.2-12.0)	1.0 (0.7-2.0)	<.001	1.0 (0.7-2.0)	<.001	1.4 (0.8-3.0)	<.001
Median (IQR) BMI, kg/m ²	26.2 (23.3-28.9)	26.7 (23.8-29.7)	<.001	26.6 (23.8-29.6)	<.001	26.3 (23.6-29.3)	.03
Median (IQR) eGFR, mL/min/1.73 m ²	102.2 (85.8-115.1)	104.0 (87.8-117.2)	<.01	103.4 (87.4-116.1)	.02	102 (85.8-115.0)	.9
Biologically related, %	5.5	53	<.001	0	<.001	0	<.001

NKR, National Kidney Registry; UNOS, United Network for Organ Sharing; KPD, kidney paired donation.