

Paired Exchange Results Quarterly Report

As of June 30, 2012

Table of Contents

Message From the Founder	3
Graft Survival – 1 Year	4
Graft Survival – 3 Year	4
Graft Survival – Detail	5
Grafts Not Surviving– Detail	5
Website Visits Per Month	6
NKR Patient Referrals Per Month	6
New Pair Registrations Per Month	7
Transplants Facilitated by Year	7
2011 Transplants by Wait Time	8
Number of Transplanted Patients with cPRA >80%	8
Transplanted Patient Average Wait Time	9
Enrolled Patient Average Wait Time	9
Cumulative Pool Distribution by Status	10
Percent of Patients Transplanted in < 6 Months	10
Transplanted Patients by Year by cPRA	11
Average cPRA of Transplanted Patients by Year	11
Transplants by cPRA	12
Pool Composition by cPRA	12
Chain Lengths	13
Summary of Broken Chains	13
Broken Chains by Year - Summary	14
Broken Chains by Year - Detail	14
NKR Program Statistics	15
Medical Board	16
Member Centers	18



Message From the Founder

The first half of 2012 saw continued growth with the successful completion of 97 exchange transplants including 13 patients with cPRAs in excess of 95%. Many of these highly sensitized patients found donor matches that did not require any desensitization.

In this latest update, we have initiated reporting on graft survival. NKR facilitated transplants demonstrate a one year graft survival of 99.4% and a three year graft survival of 95.5 % which compares favorably with the national average living donor graft survival of 95.1% and 87.9% respectively (OPTN data as of 7/13/12).

We continue to rapidly grow our network of Member Centers and are now working with 20 of the top 25 U.S. transplant centers (by 2011 transplant volume). Ten more centers began working with us in the first half of this year. These new member centers along with the rapid increase in pair enrollment from our existing centers are increasing the size and diversity of our pool. This growth is improving every patient's chance of finding a well matched donor and getting transplanted quickly

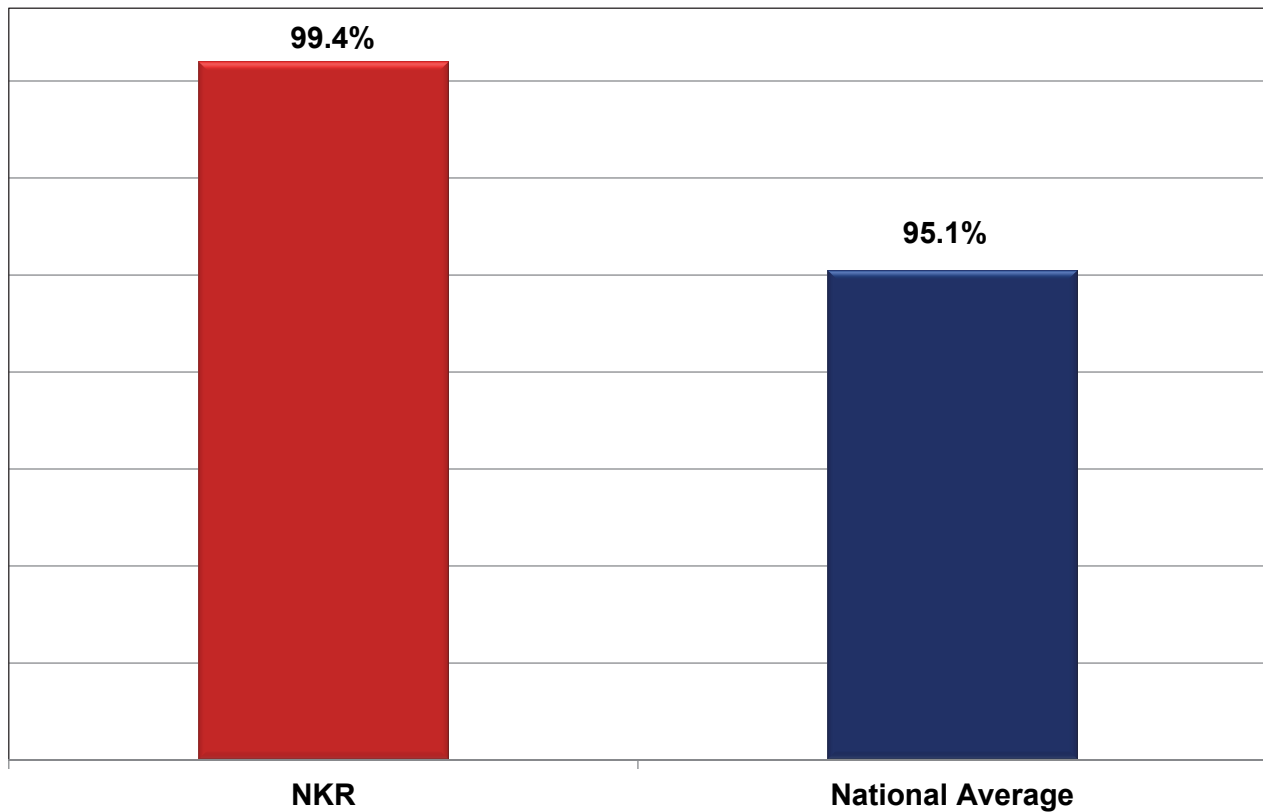
None of this success would be possible without the effort and dedication of the medical professionals at our Member Centers. Thank you - and keep up the great work.

Sincerely

A handwritten signature in blue ink, appearing to be 'G Hil', written in a cursive style.

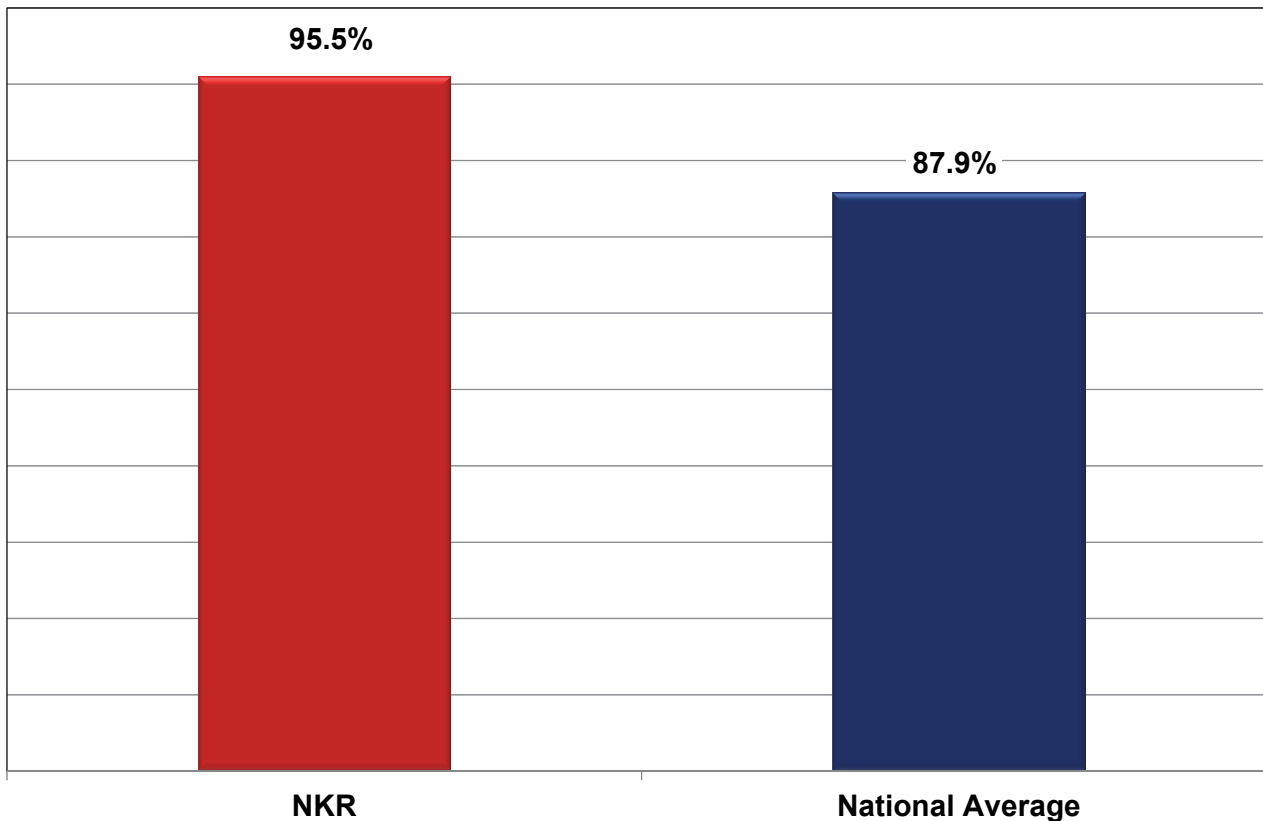
Garet Hil
Founder & President
National Kidney Registry

Graft Survival – 1 Year



*NKR as reported by member centers , national average as reported by OPTN 7/13/2012

Graft Survival – 3 Year



*NKR as reported by member centers , national average as reported by OPTN 7/13/2012

Graft Survival - Detail

	1 Year	3 Year
NKR	99.4%	95.5%
National Average	95.1%	87.9%

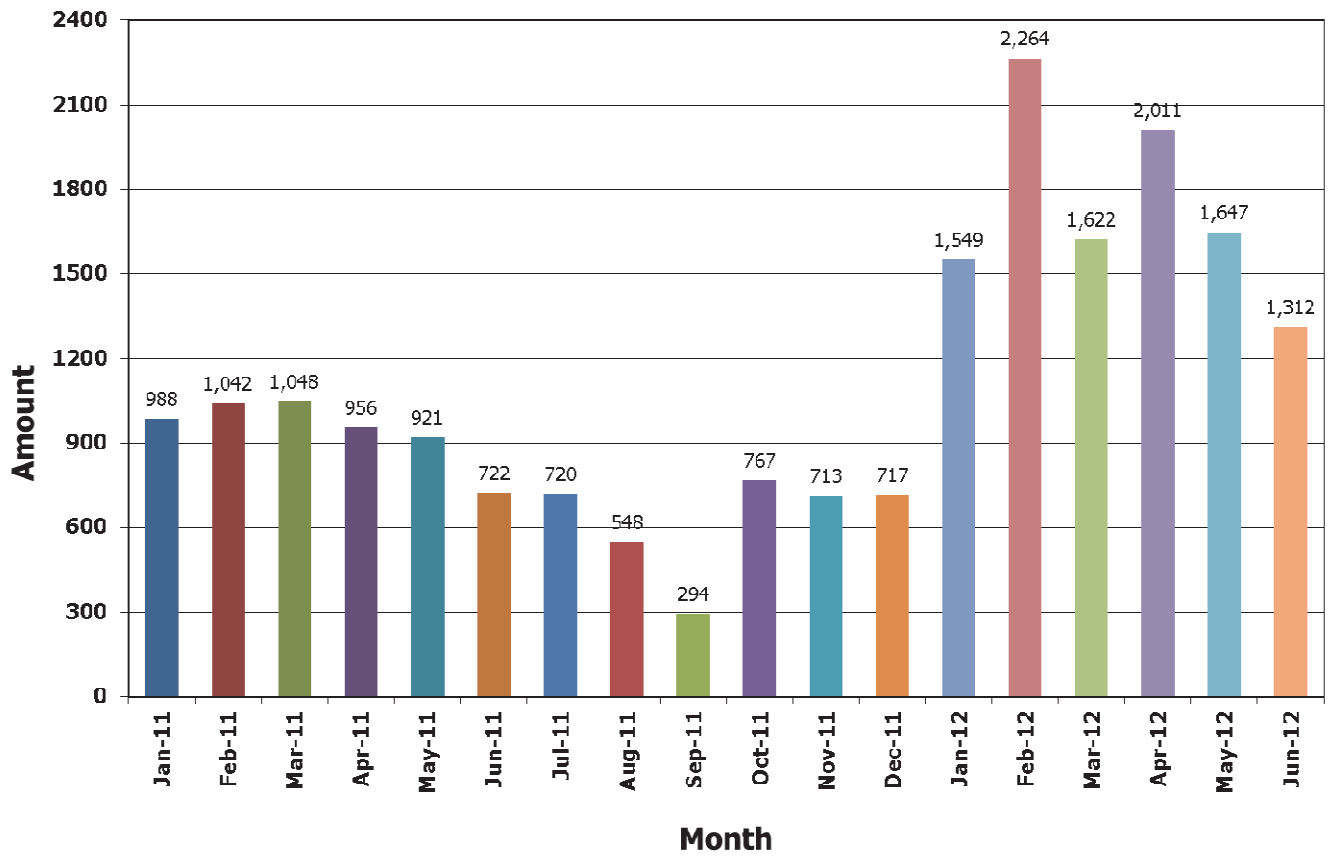
*NKR as reported by member centers , national average as reported by OPTN 7/13/2012

Grafts Not Surviving - Detail

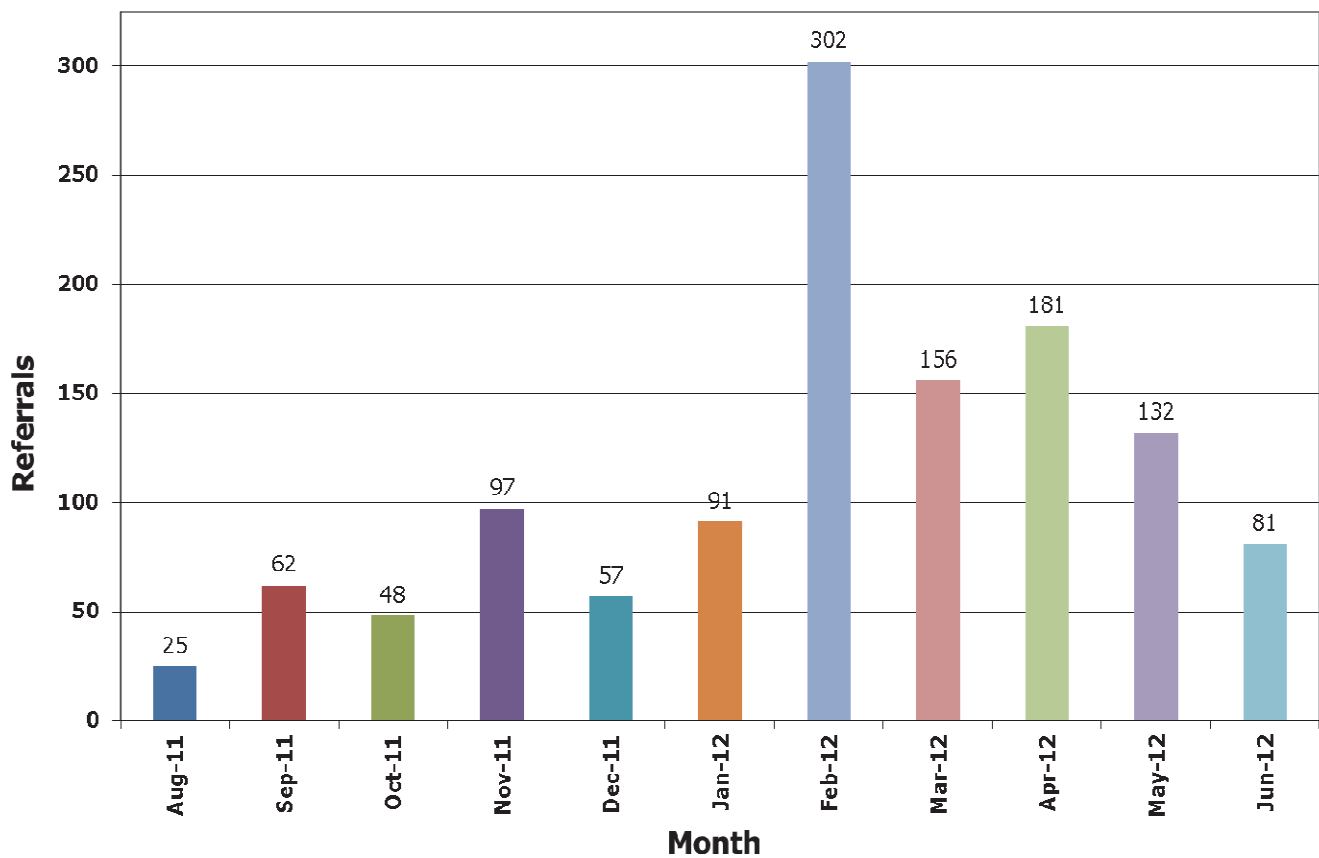
<i>Xplant Date</i>	<i>Chain #</i>	<i>Clust #</i>	<i>Pos #</i>	<i>cPRA</i>	<i>NKR Reg Date</i>	<i>CHIP?</i>	<i>DGF?</i>	<i>1 Mo Creat</i>	<i>6 Mo Creat</i>	<i>1 Year Creat</i>	<i>Date Failed</i>	<i>Reason</i>	<i>Years Graft Survived</i>
3/12/09	9	1	2	0	10/3/08	no	no	1.3	1.3	1.6	8/24/10	Non Compliance	1.5
6/26/09	10	4	1	0	1/17/09	no	no	1.4	1.4	35.6	2/11/10	Non Compliance	0.6
3/18/10	61	1	1	46	3/7/10	no	no	1.6	1.6	19.4	3/20/11	Non Compliance	1.0
9/27/10	61	4	3	0	4/20/10	no	no	1.66	1.46	1.32	11/1/11	Other	1.1
10/5/10	88	1	2	50	5/11/10	yes	no	0.3	4.94	5.38	11/14/10	Renal vein thrombosis	0.1
1/6/11	92	1	5	0	12/14/10	yes	yes	3.63	0	0	2/20/12	Non Compliance	1.1
6/28/11	126	1	2	74	3/14/11	no	no	2.3	6.3	0	11/17/12	Recurrent disease	0.5
10/4/11	130	1	2	65	9/13/11	no	yes	5.29	10.7	0	*3/6/12	PGNF	N/A

*Date recorded

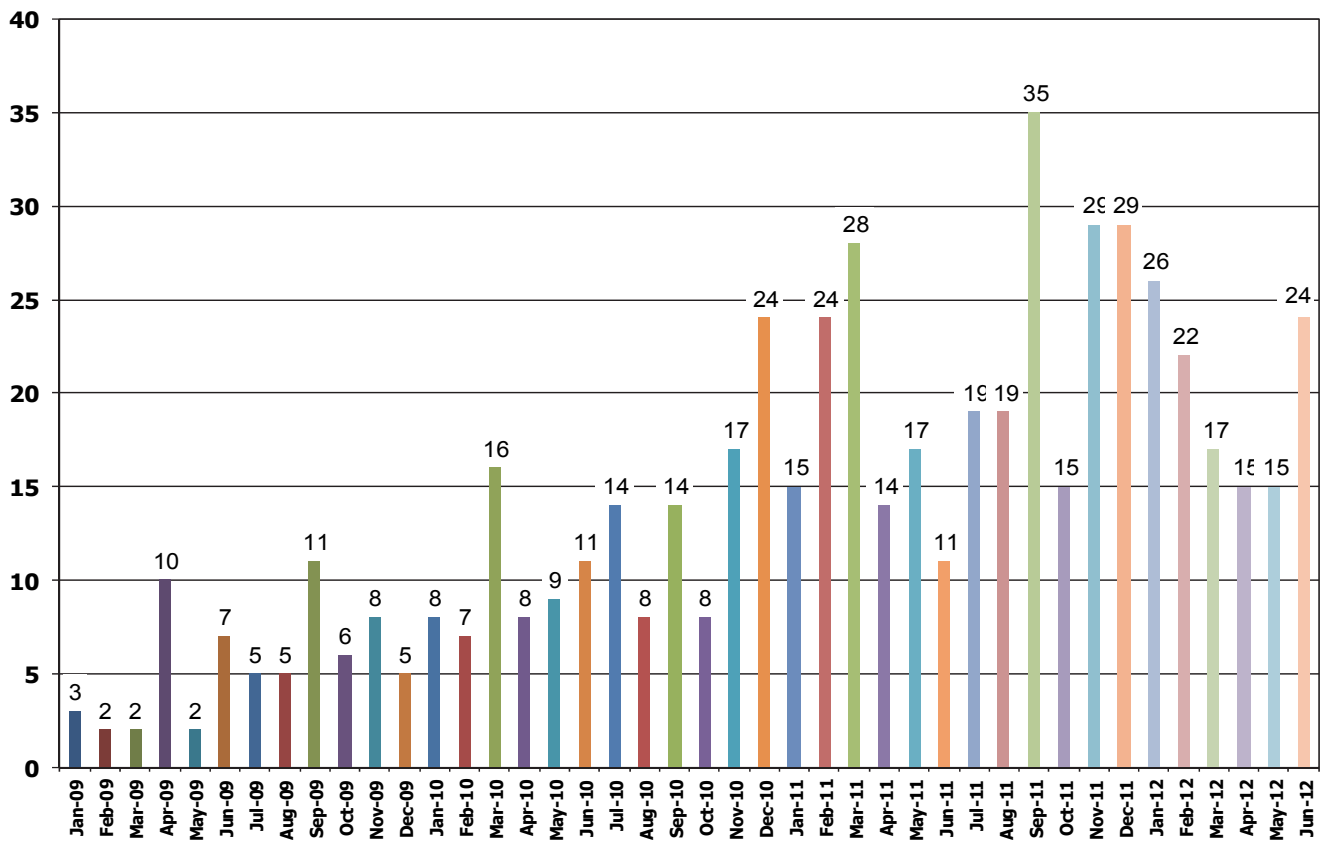
Website Visits



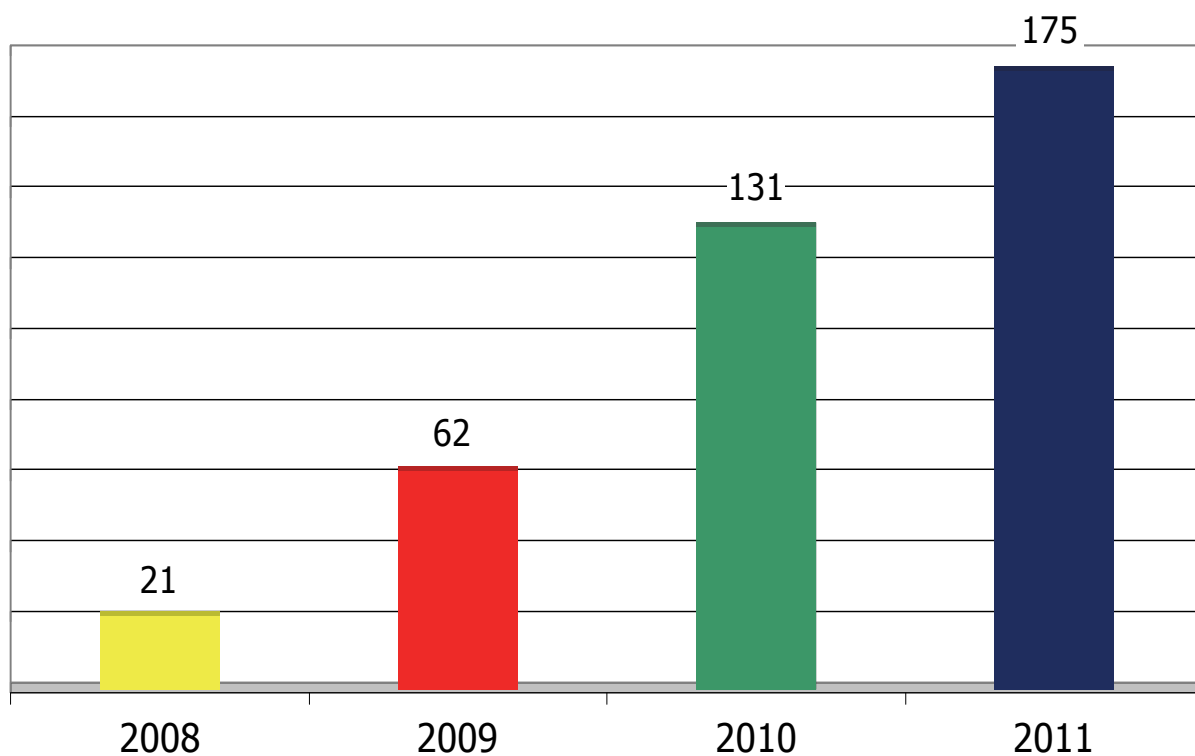
NKR Patient Referrals



New Pair Registrations Per Month

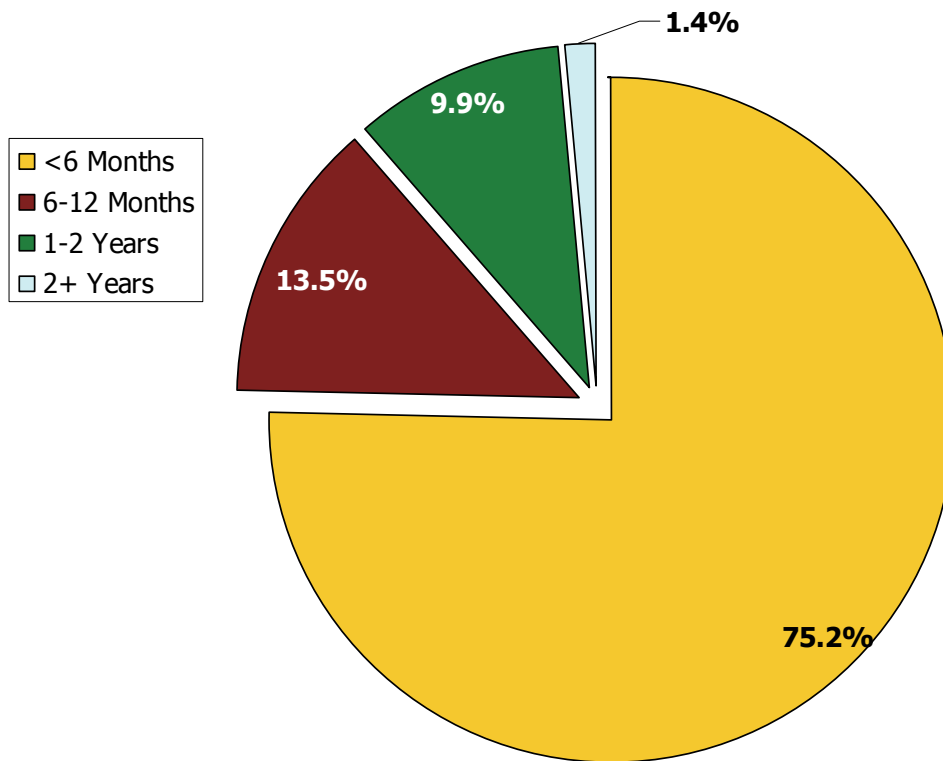


Transplants Facilitated by Year

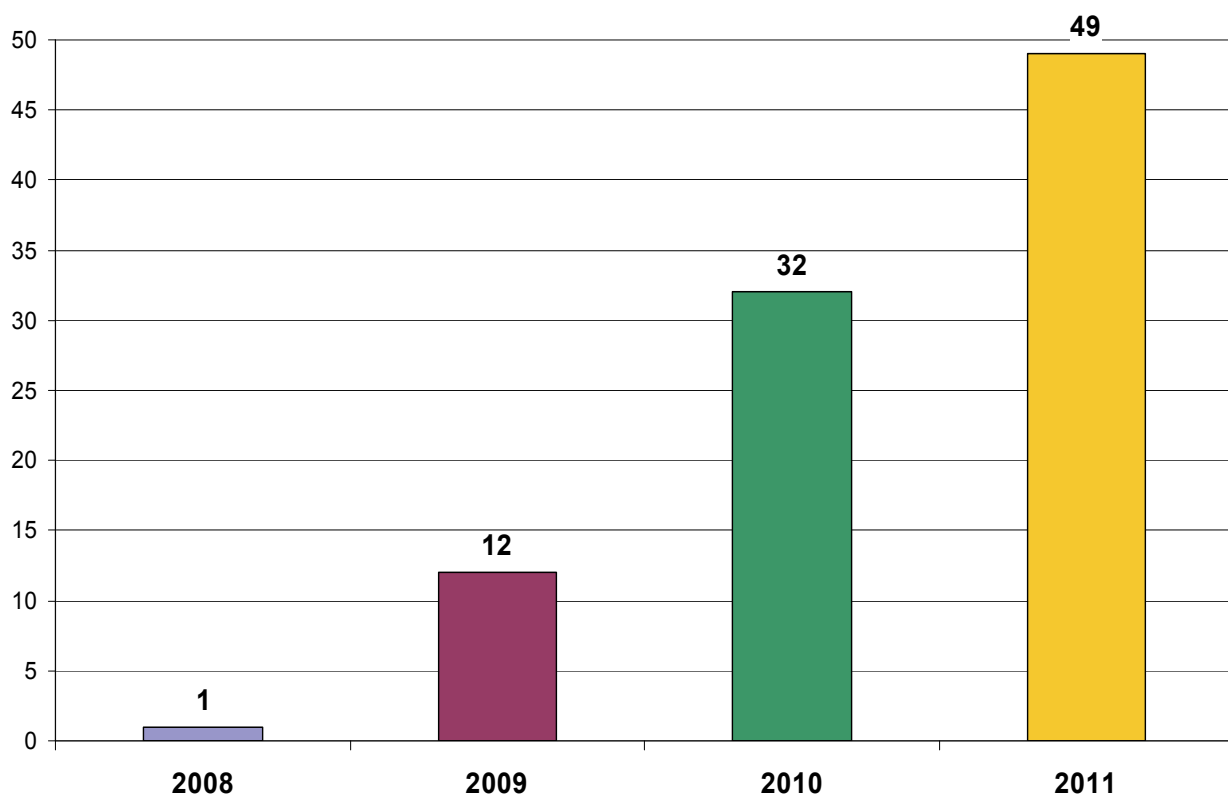


2011 Transplants by Wait Time

89% of transplanted patients waited < 12 months

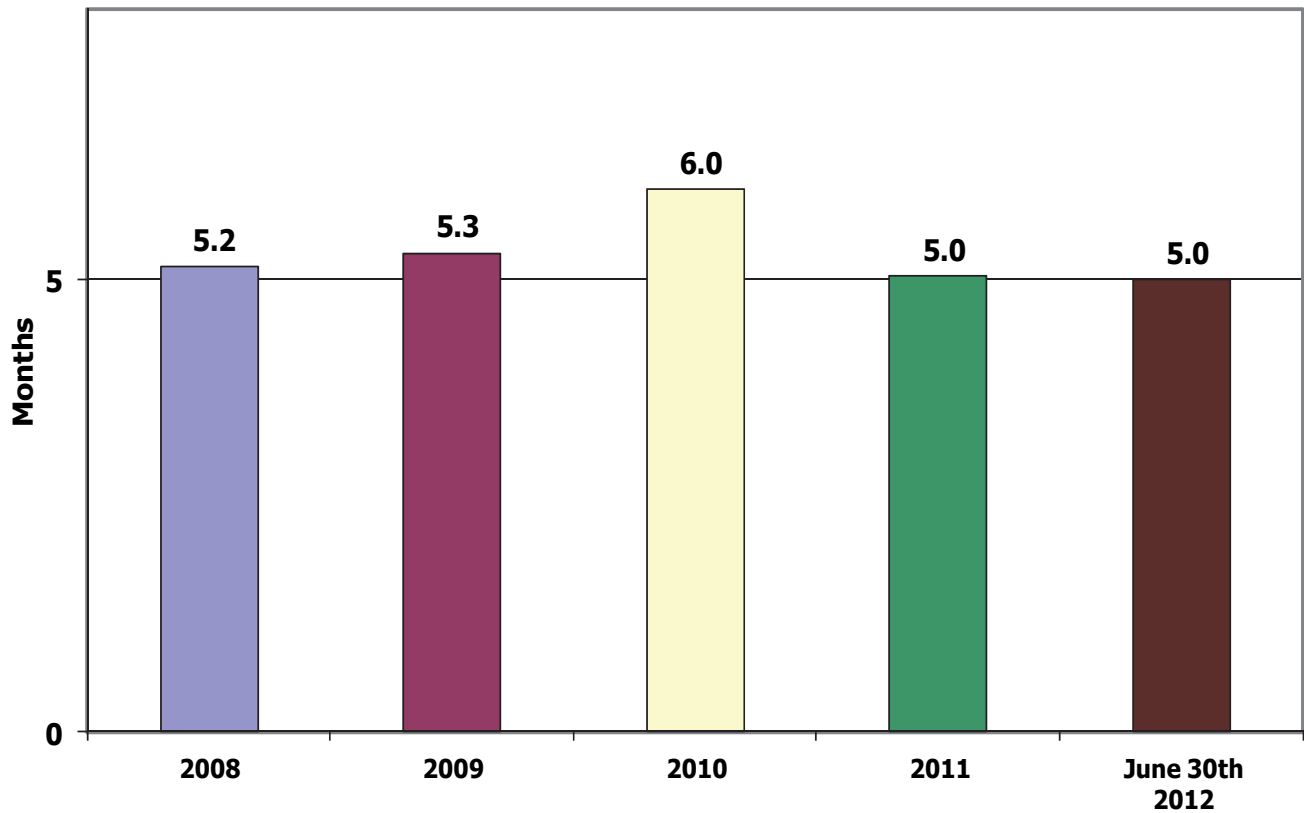


Number of Transplanted Patients with cPRA >80%



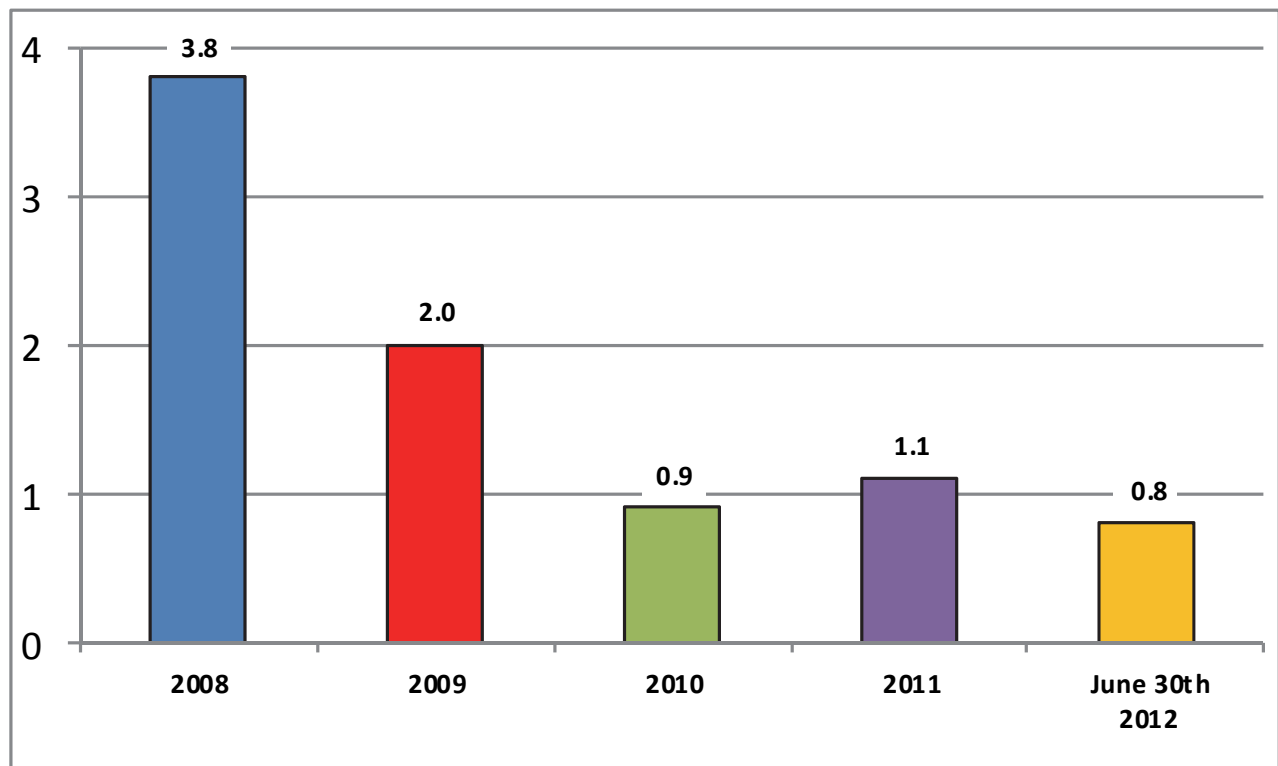
Transplanted Patient Average Wait Time

The average of the actual wait times of patients transplanted during the year
(wait time = transplant date – enrollment date)



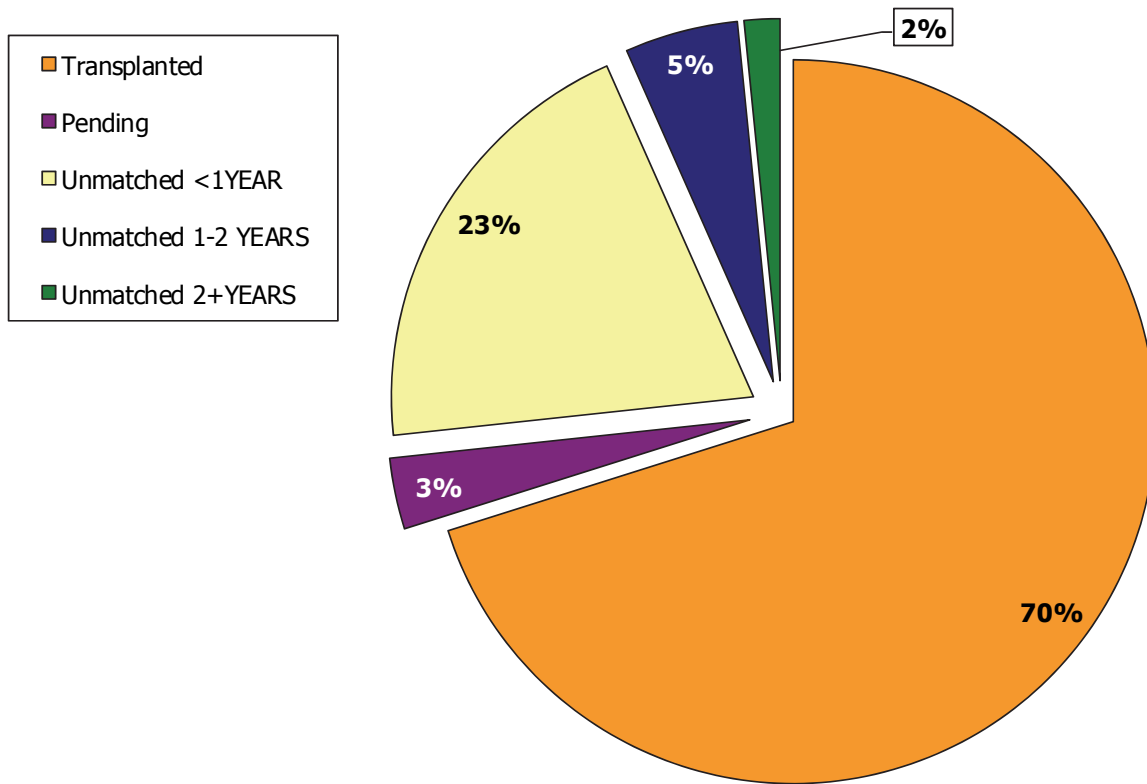
Enrolled Patient Average Wait Time

Ending unmatched patient pool/annual transplant run rate



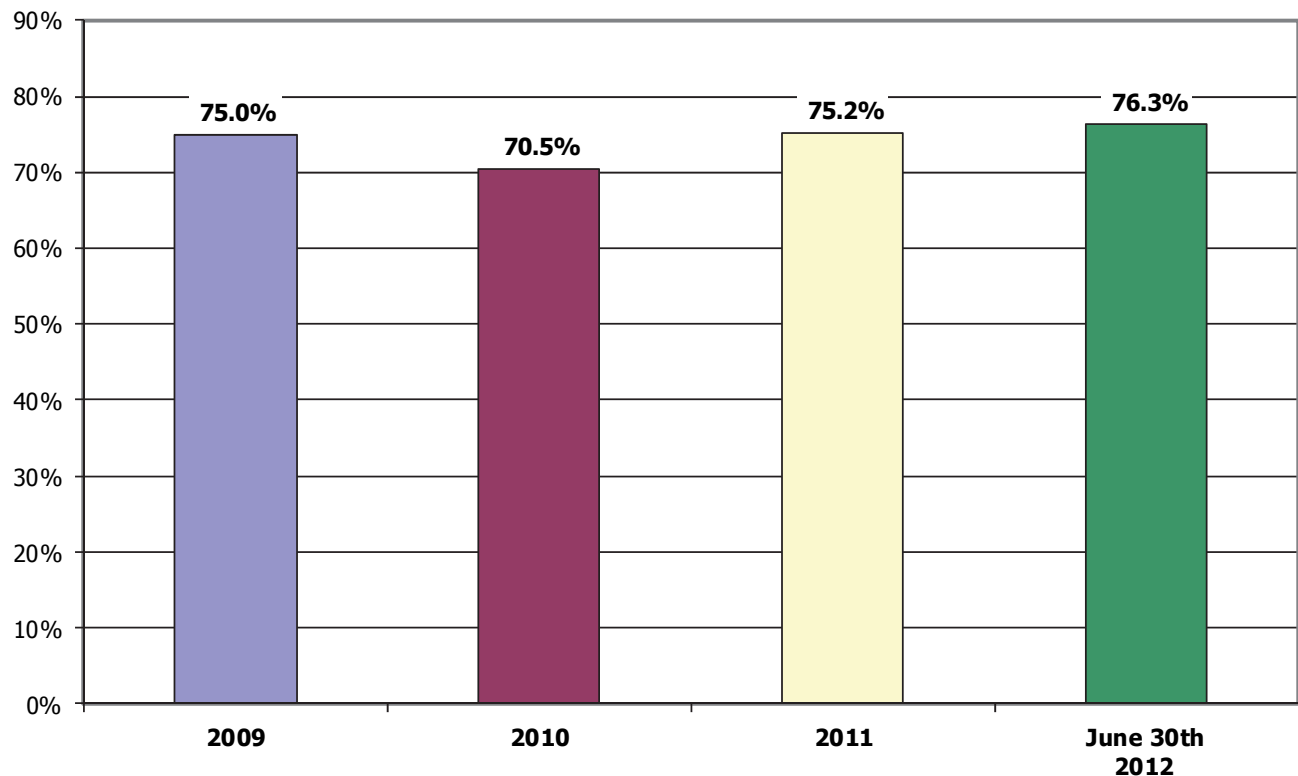
Cumulative Pool Distribution by Status

As of 6/30/2012

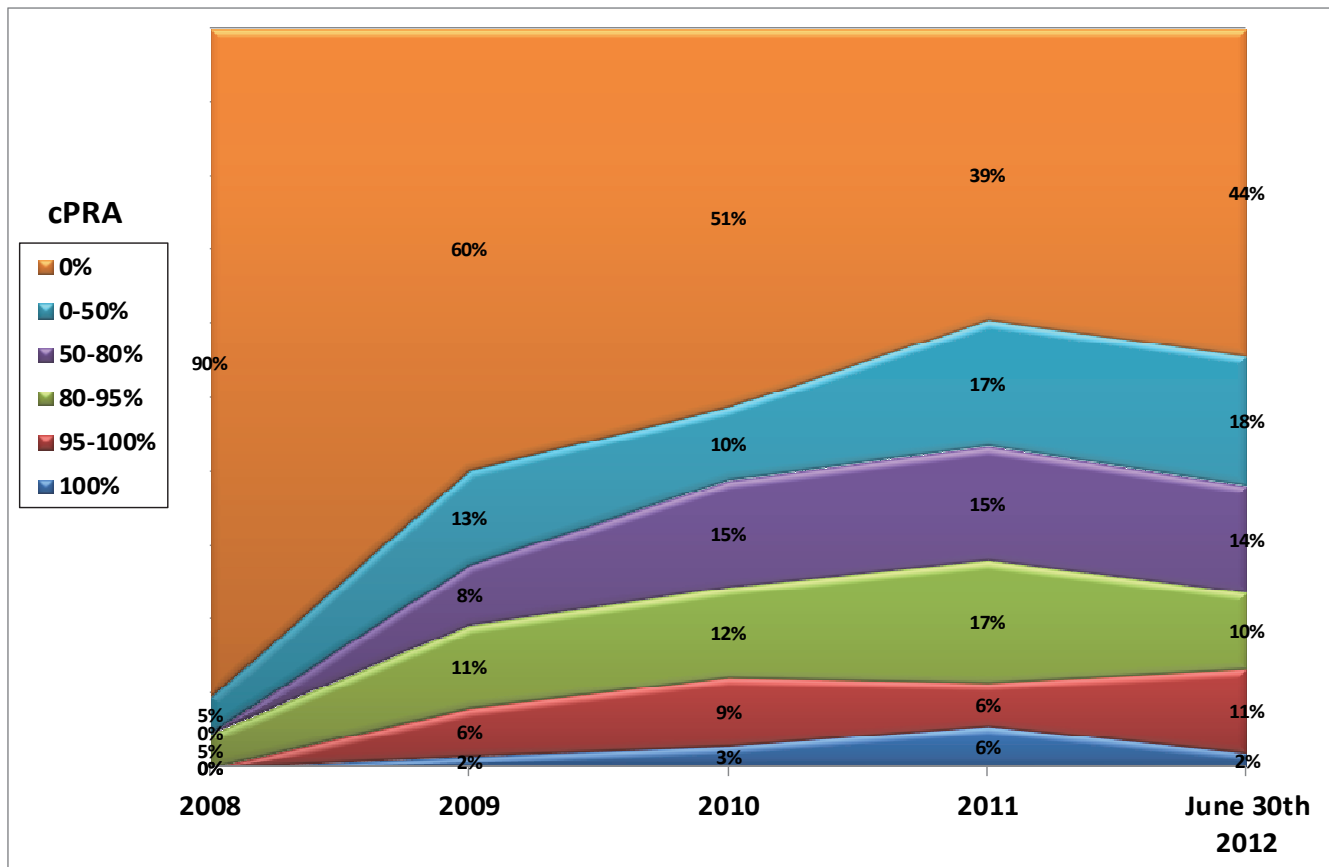


Percent of Patients Transplanted in < 6 Months

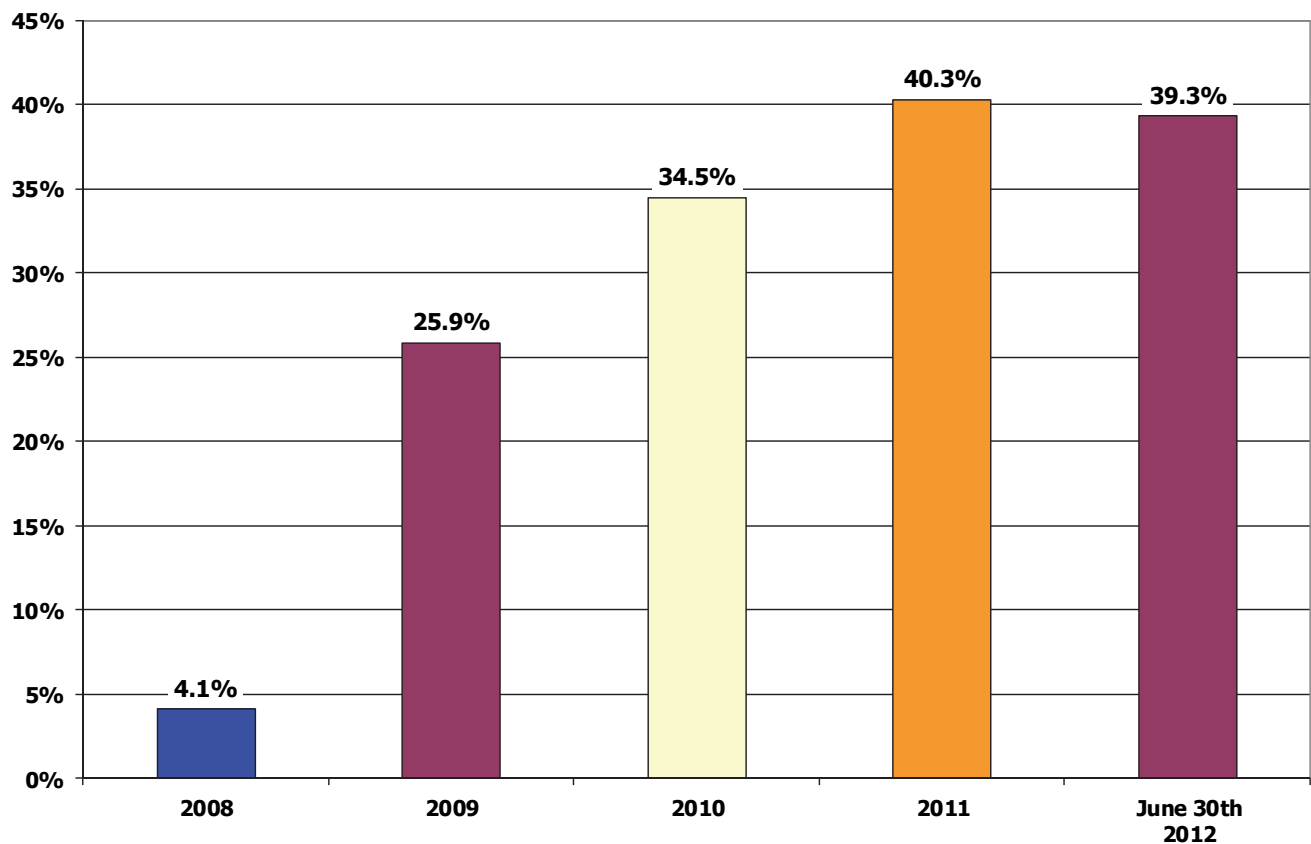
Number of transplants facilitated in < 6 months / Total transplants for same year



Transplanted Patients by Year by cPRA



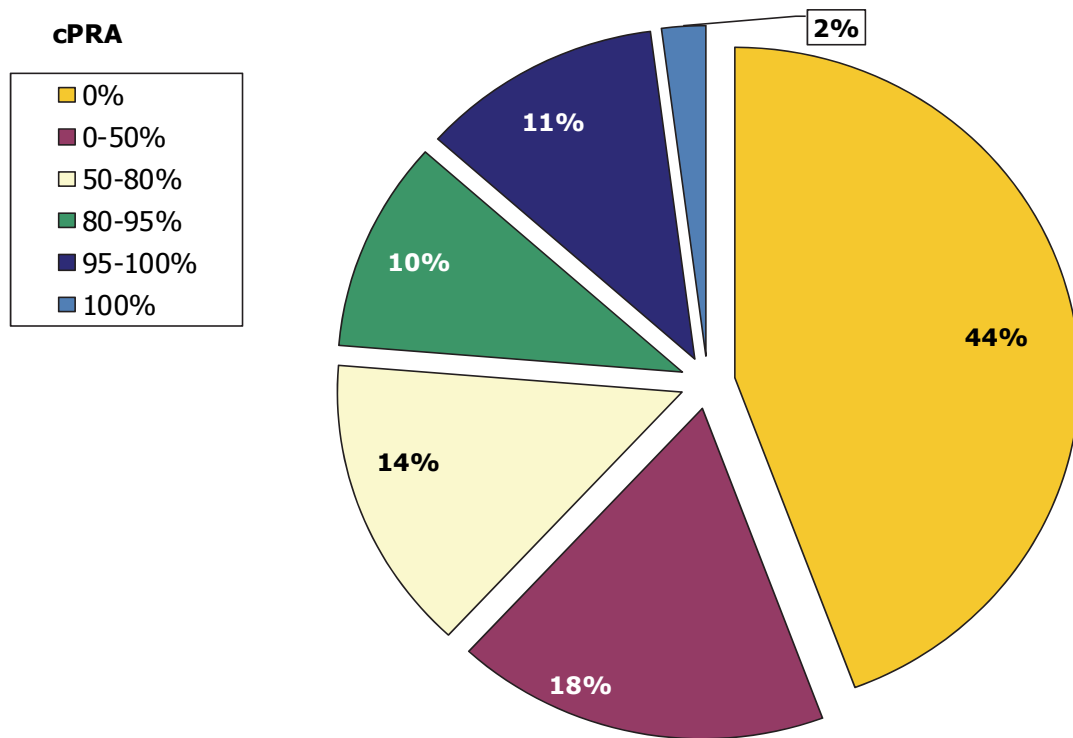
Average cPRA of Transplanted Patients by Year



Transplants by cPRA

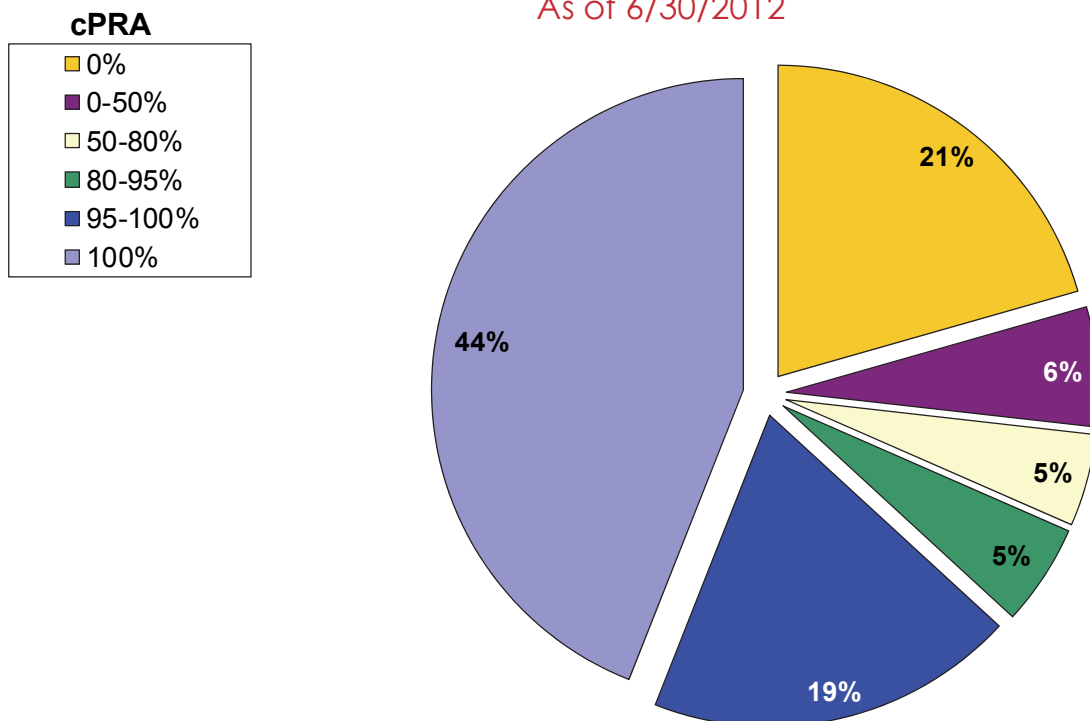
24% of transplanted patients >80% cPRA

1/1/2012 -6/30/2012



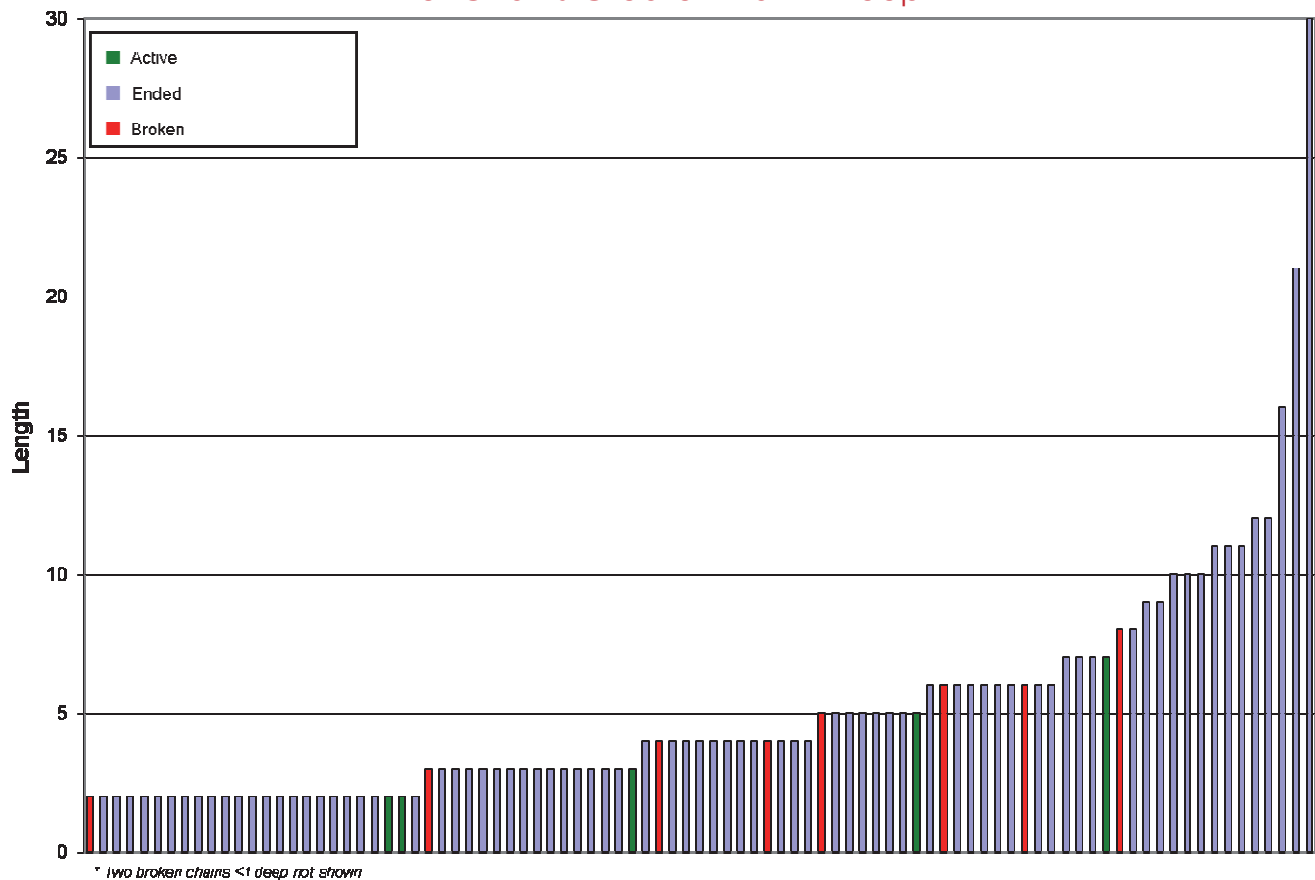
Pool Composition by cPRA

As of 6/30/2012



Chain Lengths

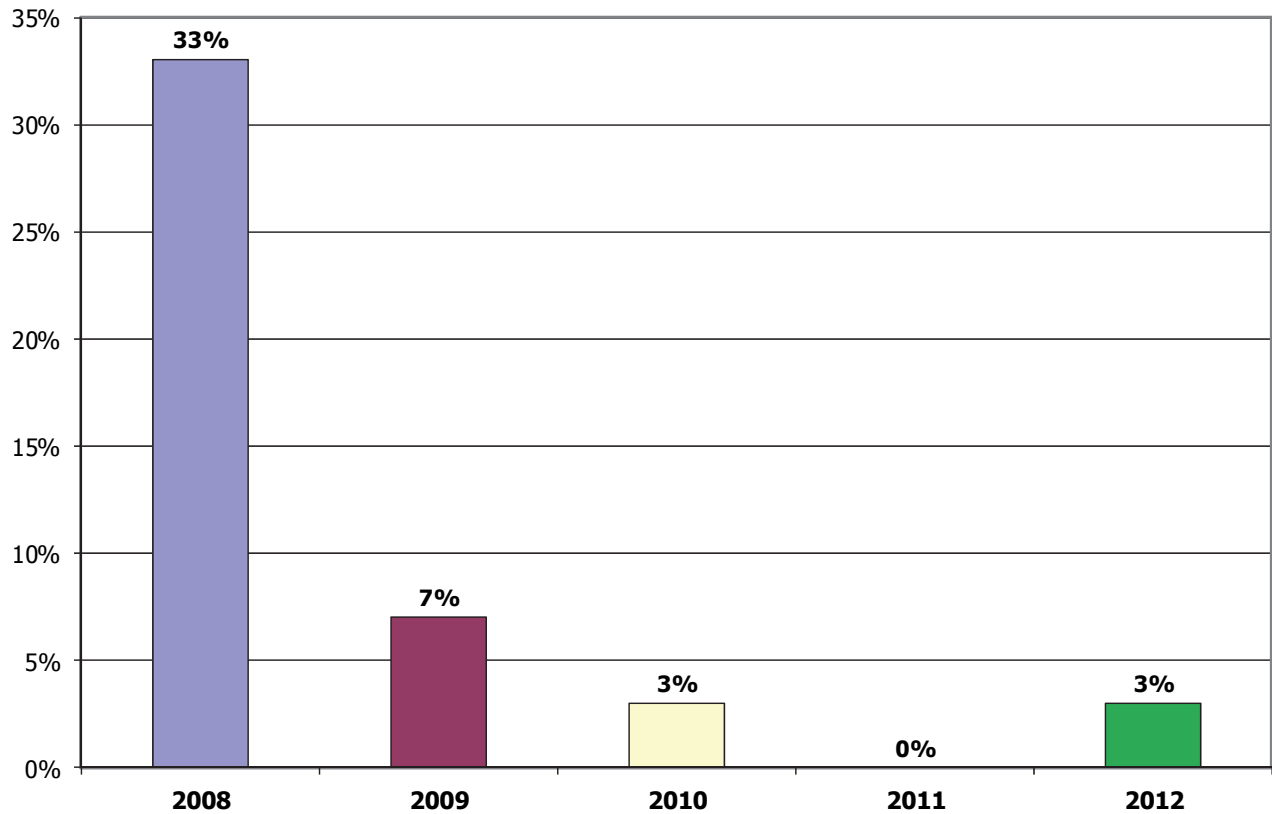
For Chains Greater Than 1 Deep



Summary of Broken Chains

<i>Reason Given</i>	<i>Center</i>	<i>Date</i>
Job Issues/ long wait time/ many failed XMs	Cornell	5/1/2008
No Reason	Cornell	8/21/2008
No Reason	CPMC	11/19/2008
Two cancelled swaps/ long wait time	UTMC	6/9/2009
Medical	UCSF	11/10/2009
Medical	UCLA	3/16/2010
Second nuclear GFR test < 80 (79 down fm 82)	AGH	9/16/2010
No Reason	MethodistTX	2/3/2012
No Reason	UCSF	4/4/2012
Medical	UCLA	6/28/2012

Broken Chains by Year - Summary



Broken Chains by Year - Detail

Year	# Bridge Donors	# Broken Chains	% Broken Per Year
2008	9	3	33%
2009	29	2	7%
2010	61	2	3%
2011	75	0	0%
2012 (Est.)	100	3	3%
Total Bridge Donors	274	10	

NKR Program Statistics

		2008	2009	2010	2011	June 30th 2012
1	Transplants Facilitated	21	62	131	175	97
2	Ending Unmatched Patient Pool	80	127	120	201	209
3	Cumulative Transplants	21	83	214	389	486
4	Cumulative Patient Pool	101	210	334	590	669
5	Percent of Pool Transplanted	21%	40%	64%	66%	73%
6	Enrolled Patient Average Wait Time	3.8	2.0	0.9	1.1	0.8
7	Transplanted Patient Average Wait Time	5.1	5.3	6.0	5.0	5.0
8	Average cPRA of Transplanted Patients	4.1%	25.9%	34.5%	40.3%	39.3%
9	Number of Transplants Completed by cPRA					
10	100%	0	1	4	10	2
11	95-100%	0	4	12	10	11
12	80-95%	1	7	16	29	10
13	50-80%	0	5	19	27	14
13	0-50%	1	8	13	30	17
14	0%	19	37	67	69	43
15	Sub-total	21	62	131	175	97
16	Percent of Transplants Completed by cPRA					
17	100%	0%	2%	3%	6%	2%
18	95-100%	0%	6%	9%	6%	11%
19	80-95%	5%	11%	12%	17%	10%
20	50-80%	0%	8%	15%	15%	14%
21	0-50%	5%	13%	10%	17%	18%
22	0%	90%	60%	51%	39%	44%
23	Sub-total	100%	100%	100%	100%	100%
24	Number of Transplanted Patients with cPRA >80%	1	12	32	49	23
25	Percent of Transplanted Patients with cPRA >80%	5%	19%	24%	28%	24%
26	Number of Unmatched Patients by cPRA (6/30/2012)					
27	100%					92
28	95-99%					40
29	80-95%					11
30	50-80%					10
31	0-50%					13
32	0%					43
33	Sub-total					209
34	Percent of Unmatched Patients by cPRA (6/30/2012)					
35	100%					44%
36	95-99%					19%
37	80-95%					5%
38	50-80%					5%
39	0-50%					6%
40	0%					21%
41	Sub-total					100%
42	Number of Transplants Completed by Wait Time					
43	< 6 months	21	42	74	106	74
44	6-12 months	0	10	14	19	15
45	1-2 years	0	4	15	14	8
46	2+ years	0	0	2	2	0
47	Sub-total	21	56	105	141	97
48	Percent of Transplants Completed by Wait Time					
49	< 6 months	100.0%	75.0%	70.5%	75.2%	76.3%
50	6-12 months	0.0%	17.9%	13.3%	13.5%	15.5%
51	1-2 years	0.0%	7.1%	14.3%	9.9%	8.2%
53	2+ years	0.0%	0.0%	1.9%	1.4%	0.0%
54	Sub-total	100%	100%	100%	100%	100%
55	Total Chains Started	3	8	28	38	30
56	Total Loops Completed	0	3	2	3	4
57	Number of broken chains	3	2	2	0	3
58	Bridge donors held (2012 is estimated)	9	29	61	75	100
59	Percent of broken chains	33%	7%	3%	0%	3%

Medical Board

Yolanda Becker, MD
Chicago, IL

Professor of Surgery
Director, Kidney and Pancreas Program
University of Chicago

Michael Cecka, PhD
Los Angeles, CA

NKR Immunogenetics Director
Professor, Department of Pathology at UCLA
Director of Clinical Research, UCLA Immunogenetics Center
Chair NKR Histocompatibility Committee

Marian Charlton, RN
New York, NY

Chief Transplant Coordinator
New York Presbyterian Hospital/Cornell University Medical Center
Chair NKR Operations Committee

Gabriel Danovitch, MD
Los Angeles, CA

Medical Director UCLA Kidney & Pancreas Program
Ronald Reagan UCLA Medical Center
Professor, David Geffen School of Medicine at UCLA

Michael Dattoli, MD
Sarasota, FL

Founder & Physician-in-Chief
Dattoli Cancer Center & Brachytherapy Research Institute

Connie Davis, MD
Seattle, WA

NKR Medical/Governmental Policy Advisor
Professor of Medicine, University of Washington
Medical Director Kidney & Pancreas Transplant Programs

Howard Gebel, PhD
Atlanta, GA

Professor Department of Pathology
Co-Director, Histocompatibility and Molecular Immunogenetics Lab
Emory University Hospital

Pam Heckathorn Hale
Los Angeles, CA

Kidney Transplant Recipient
Public Member

Valerie Johnson, MD, PhD
New York, NY

Chief, Division of Pediatric Nephrology
New York Presbyterian Hospital/Cornell University Medical Center
Associate Professor of Clinical Pediatrics Cornell University

Sandip Kapur, MD
New York, NY

Chief Transplantation, Surgical Director Kidney & Pancreas Program
New York Presbyterian Hospital/Cornell University Medical Center
Associate Professor of Surgery Cornell University

Steven Katznelson, MD
San Francisco, CA

Medical Director, Kidney & Pancreas Transplant Programs
Vice Chairman, Barry Levin Department of Transplantation
California Pacific Medical Center

Debbie Mast,
Palo Alto, CA

Database Administrator/Financial Manager
Solid Organ Transplant/VAD Program
Stanford Hospital and Clinics

Medical Board

Suzanne McGuire, RN
Los Angeles, CA

High Risk & Living Donor Exchange Transplant Coordinator
Kidney and Pancreas Transplant Program
Ronald Reagan UCLA Medical Center

Marc Melcher, MD, PhD
Palo Alto, CA

Chair, NKR Research Committee
Assistant Professor of Surgery
Stanford University Medical Center
Lucile Packard Children's Hospital

John Milner, MD
Chicago, IL

Associate Professor of Surgery Loyola
Director of Living Donor and Chain/Paired Exchange Transplantation
Loyola University Medical Center

Marie Morgieovich, APN
Livingston, NJ

Transplant Nurse Practitioner, Living Donor Institute
Saint Barnabas Medical Center

Sally Satel, MD
Washington, DC

Resident Scholar, American Enterprise Institute
Lecturer, Yale University School of Medicine
Psychiatrist, Oasis Drug Treatment Clinic & Kidney Recipient

David Serur, MD
New York, NY

NKR Medical Director
Medical Director, Kidney & Pancreas Transplant, Rogosin
Associate Professor Medicine & Surgery Cornell University
Attending Physician & Surgeon New York Presbyterian Hospital

Helen Spicer, RN
Richmond, VA

Director, Kidney Transplant Services
Virginia Transplant Center
Henrico Doctors' Hospital

Angela Stimpson,
Schenectady, NY

Good Samaritan Donor
Public Member

Barry Straube, MD
Washington, DC

Nephrologist & Transplant Physician
Former Chief Medical Officer Centers for Medicare & Medicaid

Jeffrey Veale, MD
Los Angeles, CA

Director Donor Exchange Program & Surgeon
Ronald Reagan UCLA Medical Center
Assistant Professor, David Geffen School of Medicine at UCLA

Member Centers

Center Name	City	State
Allegheny General Hospital	Pittsburgh	PA
Barnes-Jewish Hospital	St. Louis	MO
Brigham and Women's Hospital	Boston	MA
California Pacific Medical Center	San Francisco	CA
Centura Porter Adventist Hospital	Denver	CO
Christiana Care Health System	Newark	DE
Cleveland Clinic	Cleveland	OH
Crozer-Chester Medical Center	Upland	PA
Emory Transplant Center	Atlanta	GA
Fletcher Allen Health Care	Burlington	VT
Froedtert Memorial Lutheran Hospital	Milwaukee	WI
Indiana University Health Transplant	Indianapolis	IN
Intermountain Medical Center	Murray	UT
Keck Medical Center of USC	Los Angeles	CA
Lankenau Hospital	Wynnewood	PA
Loma Linda Medical Center	Loma Linda	CA
Loyola University Medical Center	Maywood	IL
Lucile Packard at Stanford	Palo Alto	CA
Massachusetts General Hospital	Boston	MA
Medical College of Virginia Hospitals	Richmond	VA
Medical University of S Carolina	Charleston	SC
Methodist Transplant Center	Houston	TX
Methodist University Transplant	Memphis	TN
Mount Sinai Medical Center	New York	NY
Newark Beth Israel Medical Center	Newark	NJ
NYP-Weill Cornell Living Donor Kidney Center	New York	NY
Ohio State University Medical Center	Columbus	OH

Member Centers

Center Name	City	State
Our Lady of Lourdes	Haddon Heights	NJ
Pinnacle Health Systems	Harrisburg	PA
Riverside Community Hospital	Riverside	CA
Robert Wood Johnson	New Brunswick	NJ
Rush University Medical Center	Chicago	IL
Saint Barnabas Medical Center	Livingston	NJ
Seattle Children's Hospital	Seattle	WA
Sentara Norfolk General Hospital	Norfolk	VA
Sharp Memorial Hospital	San Diego	CA
St. Joseph Hospital CA	Orange	CA
St. Luke's Transplant Center	New York	NY
St. Vincent Medical Center CA	Los Angeles	CA
Stanford University Medical Center	Palo Alto	CA
Starzl Transplantation Institute/U Pitt	Pittsburgh	PA
Tampa General Hospital	Tampa	FL
Thomas Jefferson University Hospital	Philadelphia	PA
UC Davis Medical Center	Sacramento	CA
UCLA Medical Center	Los Angeles	CA
UCSF Medical Center	San Francisco	CA
University of Chicago Medicine	Chicago	IL
University of Illinois MC	Chicago	IL
University of Maryland Medical Center	Baltimore	MD
University of Pennsylvania Hospital	Philadelphia	PA
University of Utah Medical Center	Salt Lake City	UT
University of Washington Medical Center	Seattle	WA
University of Wisconsin, Madison	Madison	WI
Virginia Transplant Center	Richmond	VA
Walter Reed National Military MC	Bethesda	MD



NATIONAL KIDNEY REGISTRY
FACILITATING LIVING DONOR TRANSPLANTS

P.O. Box 460 • Babylon • NY 11702-0460

www.kidneyregistry.org

800-936-1627