

# Paired Exchange Results Quarterly Report

As of December 31, 2011

# Table of Contents

Message From the Founder .....	3
Transplants Facilitated by Year .....	4
2011 Transplants by Wait Time .....	4
Number of Transplanted Patients with cPRA >80% .....	4
Transplanted Patient Average Wait Time .....	5
Enrolled Patient Average Wait Time .....	5
Cumulative Pool Distribution by Status .....	5
Percent of Patients Transplanted in < 6 Months .....	6
Forecasted Wait Time by ABO and cPRA .....	6
Cumulative Pool Transplanted by Year .....	6
Transplanted Patients by Year by cPRA .....	7
Average cPRA of Transplanted Patients by Year .....	7
2011 Transplants by cPRA .....	7
2011 Pool Composition by cPRA .....	7
Swaps 7/1 thru 12/31/2011 .....	8
Chain Lengths .....	10
Summary of Broken Chains .....	10
Broken Chains by Year - Summary .....	11
Broken Chains by Year - Detail .....	11
NKR Program Statistics .....	12



## Message From the Founder

2011 was another record year for the National Kidney Registry with the facilitation of 175 exchange transplants during the year including the successful completion of our longest chain - 30 transplants across 16 member centers. This brings us to 389 transplants since we began organizing swaps 4 years ago.

Our transplanted patient average wait time declined to 5 months in 2011 with 75% of transplanted patients waiting less than 6 months to get matched and transplanted. We are finding an increasing number of matches for highly sensitized patients. During 2011, 49 patients with cPRAs greater than 80% were matched and transplanted including 19 patients with cPRAs greater than 95%.

We continue to rapidly grow our network of Member Centers. During 2011 our network grew to 55 participating centers. In the last few months the following transplant centers joined our program:

- Brigham and Women's Hospital
- Cleveland Clinic
- Indiana University Health (formerly Clarian Health)
- Lucille Packard Children's Hospital (Stanford University)
- Mass General Hospital
- Seattle Children's Hospital
- University of Illinois

These new member centers along with the rapid increase in pair enrollment from our existing centers (enrollments more than doubled in 2011) are increasing the size and diversity of our pool. This growth is improving every patient's chance of finding a well matched donor and getting transplanted quickly.

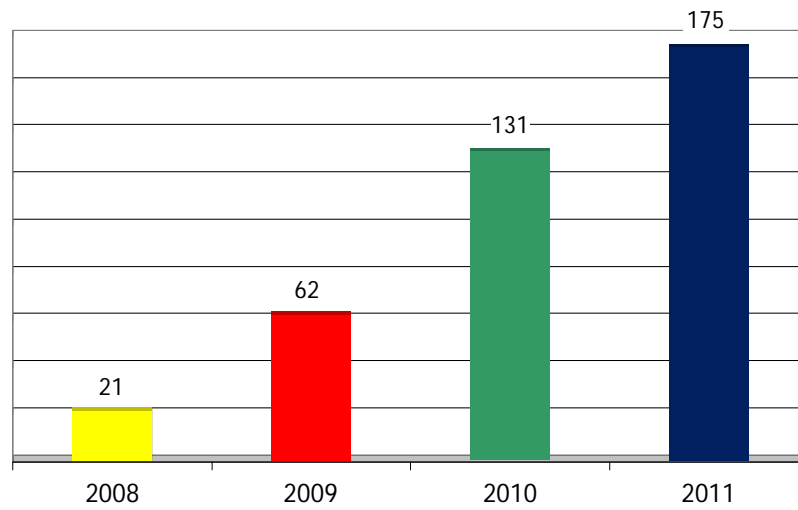
None of this success would be possible without the effort and dedication of the medical professionals at our Member Centers. Thank you - and keep up the great work.

Sincerely

A handwritten signature in blue ink, appearing to read 'G Hil', with a stylized flourish extending from the end.

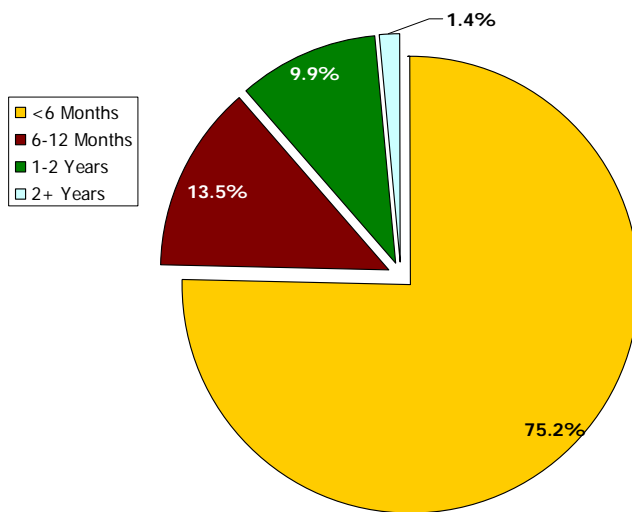
Gareth Hil  
Founder & President  
National Kidney Registry

## Transplants Facilitated by Year

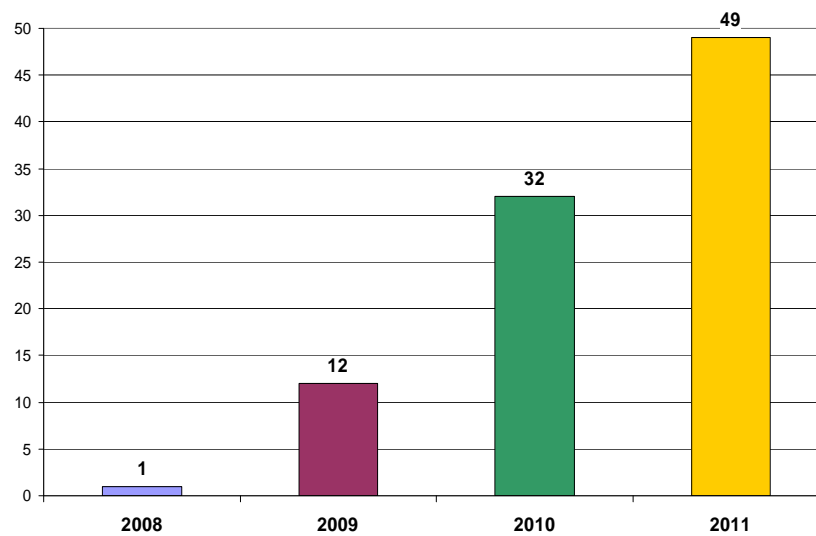


## 2011 Transplants by Wait Time

89% of transplanted patients waited < 12 months

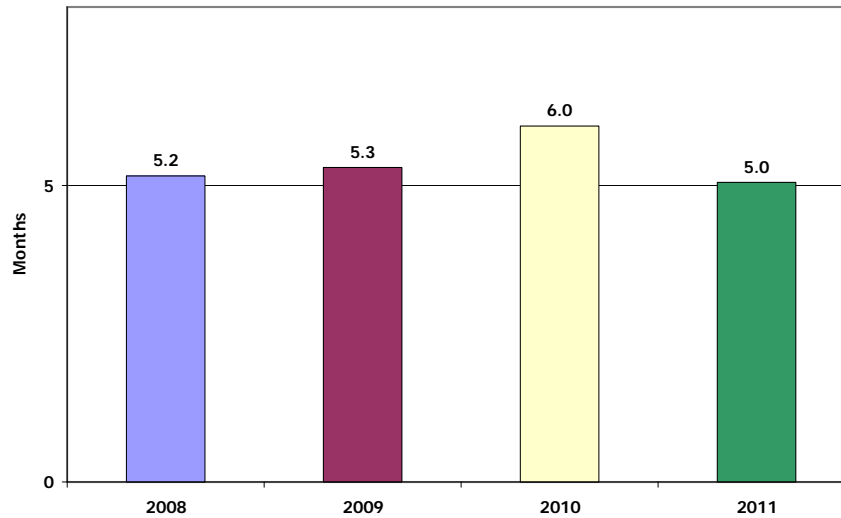


## Number of Transplanted Patients with cPRA >80%



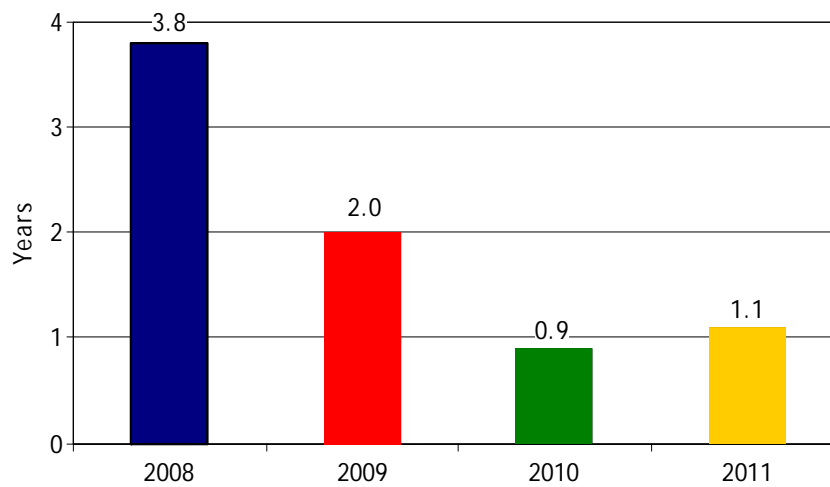
## Transplanted Patient Average Wait Time

The average of the actual wait times of patients transplanted during the year  
(wait time = transplant date – enrollment date)



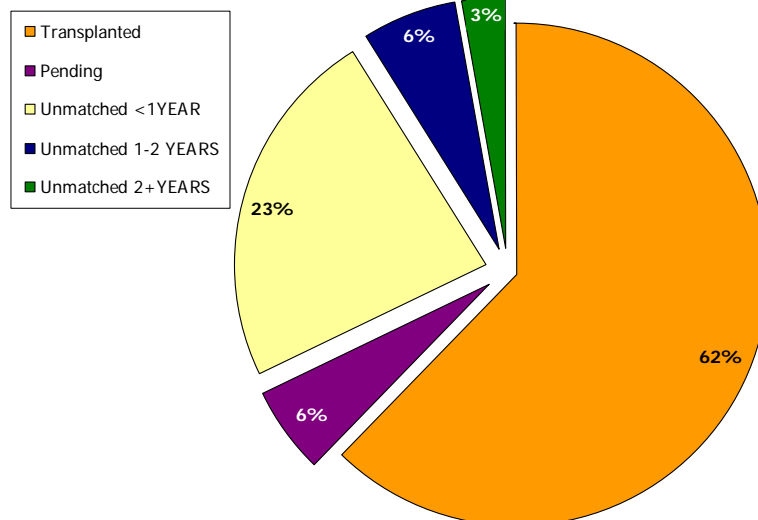
## Enrolled Patient Average Wait Time

Ending unmatched patient pool/annual transplant run rate



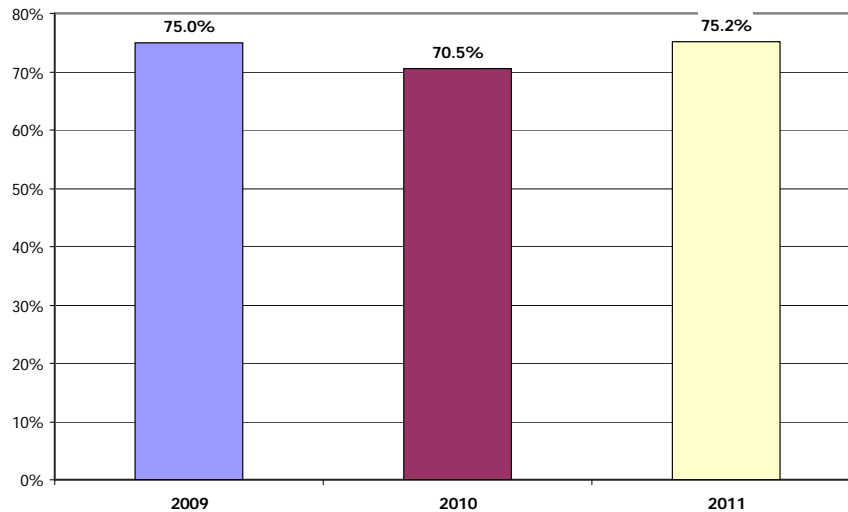
## Cumulative Pool Distribution by Status

As of 12/31/2011



## Percent of Patients Transplanted in < 6 Months

Number of transplants facilitated in < 6 months / Total transplants for same year



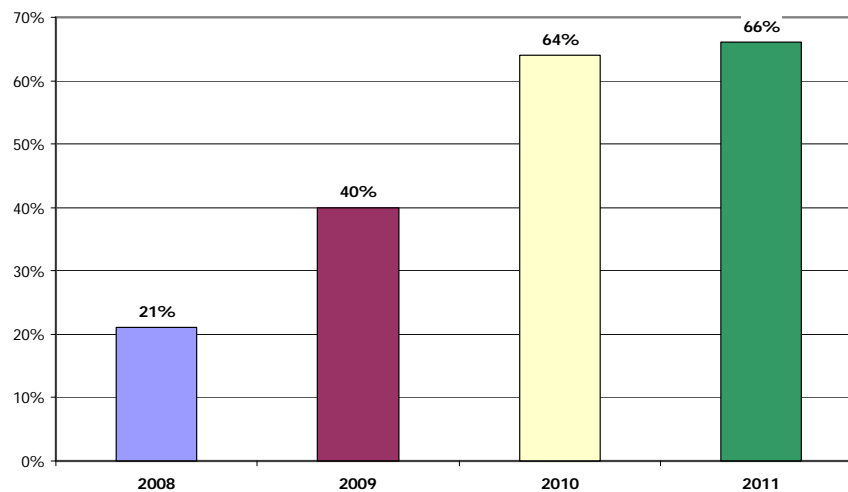
## Forecasted Wait Time by ABO and cPRA

NKR Expected Months Wait Time

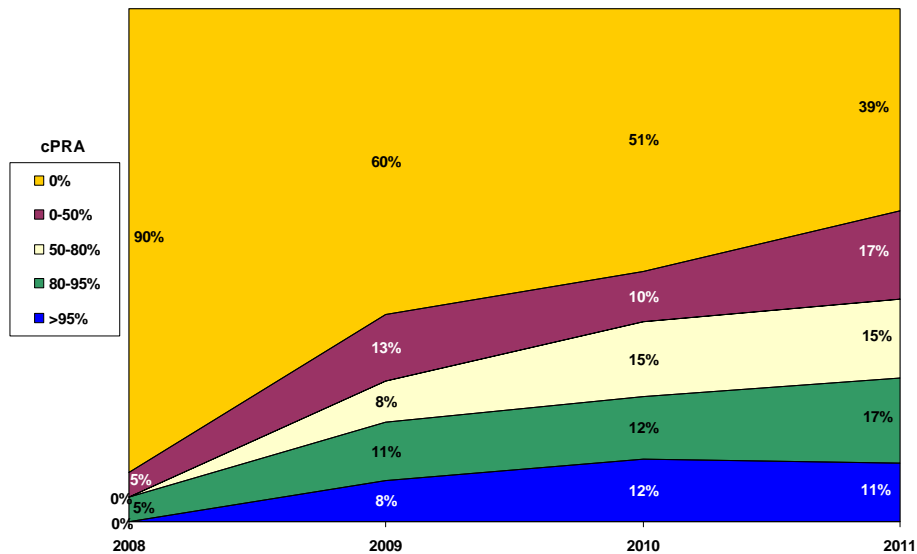
Patient Blood Type	Donor Blood Type	cPRA 0%	cPRA >0 <=50%	cPRA >50 <=80%	cPRA >80 <=95%	cPRA >95%
AB (Easiest)	O	No Data	No Data	No Data	2	15
	B	No Data	No Data	No Data	No Data	No Data
	A	1	No Data	5	No Data	No Data
	AB	No Data	No Data	No Data	3	18
A	O	2	3	3	3	23
	B	4	2	8	2	10
	A	No Data	4	14	3	17
	AB	2	No Data	No Data	No Data	54
B	O	4	No Data	7	72	16
	B	No Data	1	No Data	6	No Data
	A	5	3	5	15	No Data
	AB	4	No Data	No Data	No Data	No Data
O (Hardest)	O	3	4	5	7	84
	B	7	30	No Data	No Data	No Data
	A	12	12	12	40	350
	AB	70	No Data	No Data	8	No Data

## Cumulative Pool Transplanted by Year

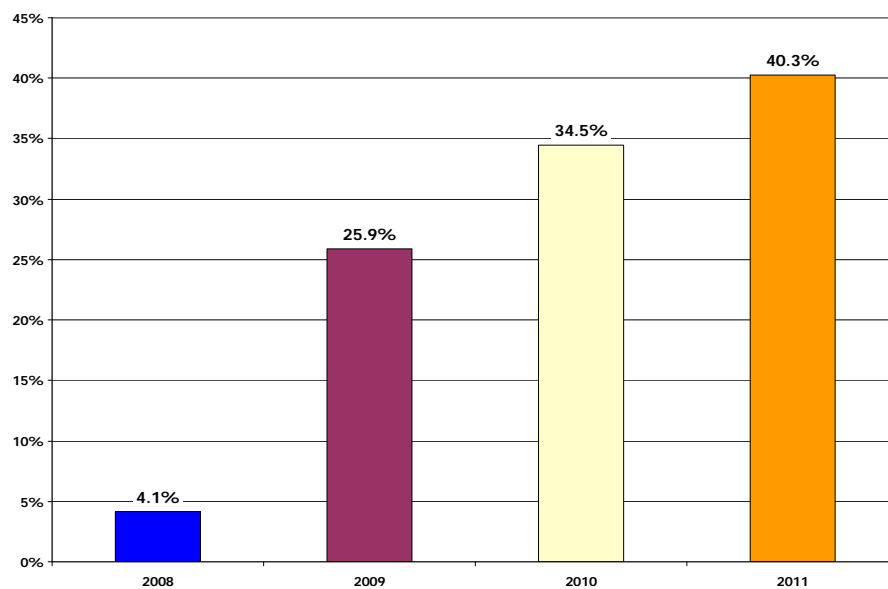
Total transplants program to date / (total transplants + ending unmatched patients)



## Transplanted Patients by Year by cPRA

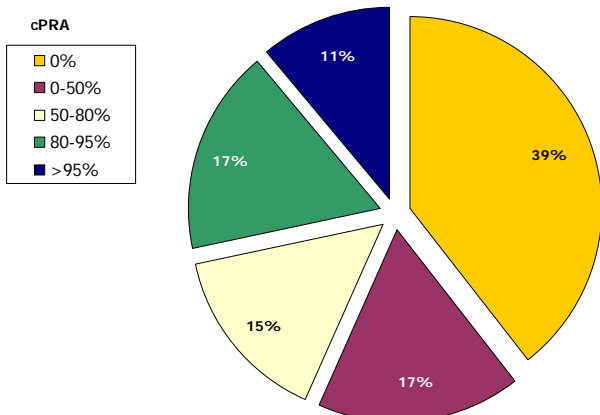


## Average cPRA of Transplanted Patients by Year



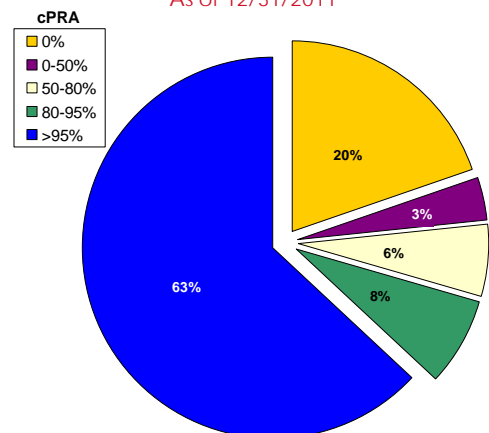
## 2011 Transplants by cPRA

28% of transplanted patients >80% cPRA



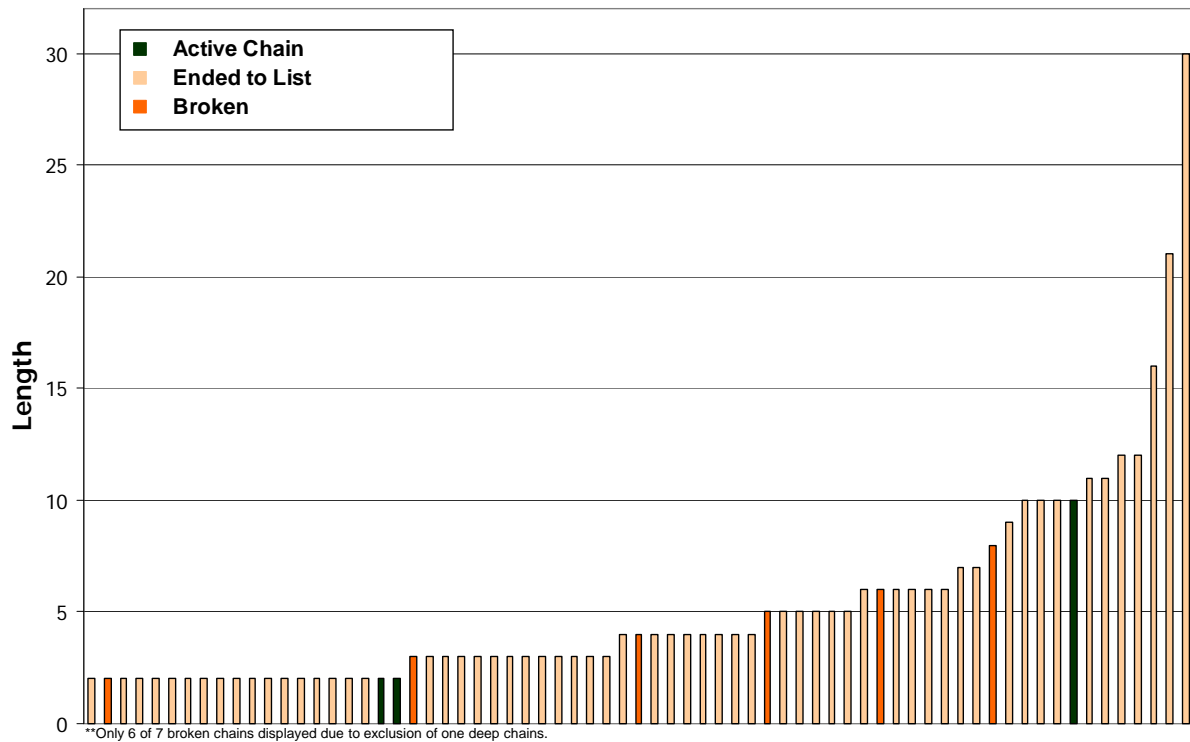
## 2011 Pool Composition by cPRA

As of 12/31/2011



## Chain Lengths

For Chains Greater Than 1 Deep

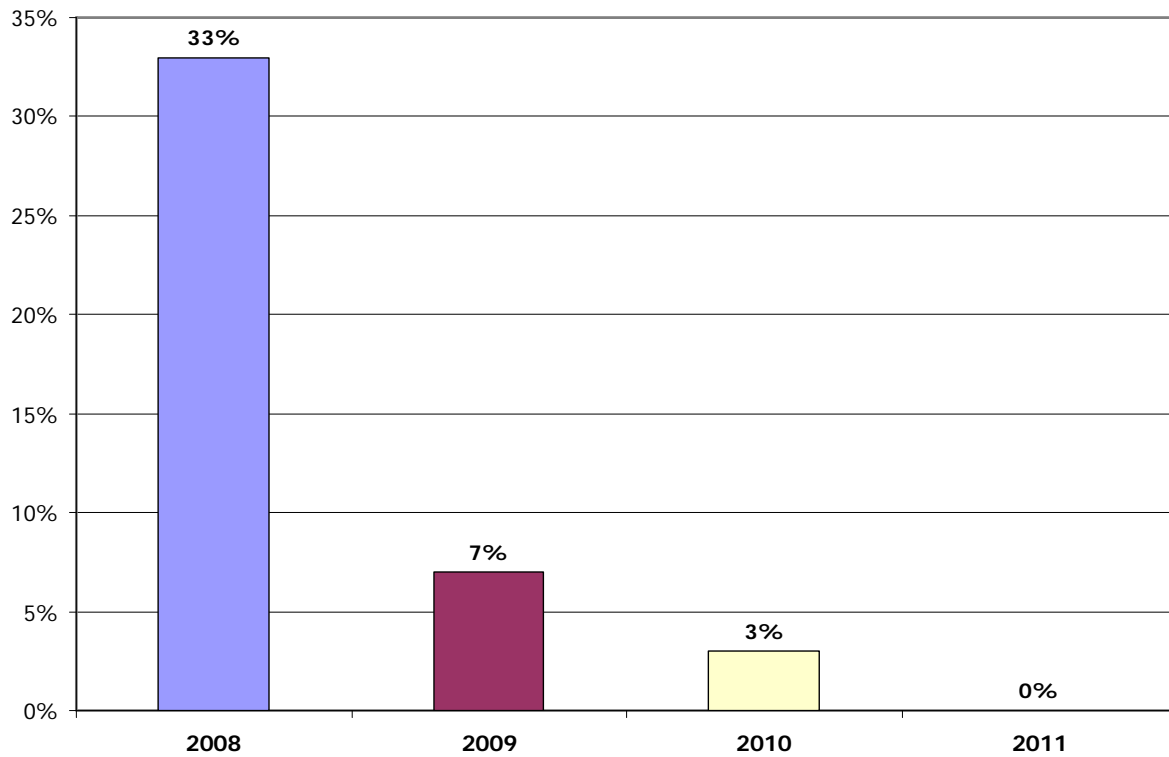


## Summary of Broken Chains

<b><i>Reason Given</i></b>	<b><i>Center</i></b>	<b><i>Date</i></b>
Job Issues/ long wait time/ many failed XMs	Cornell	5/1/2008
No Reason	Cornell	8/21/2008
No Reason	CPMC	11/19/2008
Two cancelled swaps/ long wait time	UTMC	6/9/2009
Medical	UCSF	11/10/2009
Medical	UCLA	3/16/2010
Second nuclear GFR test < 80 (79 down fm 82)	AGH	9/16/2010



## Broken Chains by Year - Summary



## Broken Chains by Year - Detail

<i><b>Year</b></i>	<i><b># Bridge Donors</b></i>	<i><b># Broken Chains</b></i>	<i><b>% Broken Per Year</b></i>
2008	9	3	33%
2009	29	2	7%
2010	61	2	3%
2011	75	0	0%
<b>Total Bridge Donors</b>	<b>174</b>	<b>7</b>	

# NKR Program Statistics

		2008	2009	2010	2011
1	Transplants Facilitated	21	62	131	175
2	Ending Unmatched Patient Pool	80	127	120	201
3	Cumulative Transplants	21	83	214	389
4	Cumulative Patient Pool	101	210	334	590
5	Percent of Pool Transplanted	21%	40%	64%	66%
6	Enrolled Patient Average Wait Time	3.8	2.0	0.9	1.1
7	Transplanted Patient Average Wait Time	5.1	5.3	6.0	5.0
8	Average cPRA of Transplanted Patients	4.1%	25.9%	34.5%	40.3%
9	Number of Transplants Completed by cPRA				
10	>95%	0	5	16	20
11	80-95%	1	7	16	29
12	50-80%	0	5	19	27
13	0-50%	1	8	13	30
13	0%	19	37	67	69
14	Sub-total	21	62	131	175
15	Percent of Transplants Completed by cPRA				
16	>95%	0%	8%	12%	11%
17	80-95%	5%	11%	12%	17%
18	50-80%	0%	8%	15%	15%
19	0-50%	5%	13%	10%	17%
20	0%	90%	60%	51%	39%
21	Sub-total	100%	100%	100%	100%
22	Number of Transplanted Patients with cPRA >80%	1	12	32	49
23	Percent of Transplanted Patients with cPRA >80%	5%	19%	24%	28%
24	Number of Unmatched Patients by cPRA at year-end				
25	>95%				152
26	80-95%				15
27	50-80%				14
28	0-50%				14
29	0%				50
30	Sub-total				245

# NKR Program Statistics

		2008	2009	2010	2011
31	Percent of Unmatched Patients by cPRA at year-end				
32	>95%				62%
33	80-95%				6%
34	50-80%				6%
35	0-50%				6%
36	0%				20%
37	Sub-total				100%
38	Number of Transplants Completed by Wait Time				
39	< 6 months	21	42	74	106
40	6-12 months	0	10	14	19
41	1-2 years	0	4	15	14
42	2+ years	0	0	2	2
43	Sub-total	21	56	105	141
44	Percent of Transplants Completed by Wait Time				
45	< 6 months	100.0%	75.0%	70.5%	75.2%
46	6-12 months	0.0%	17.9%	13.3%	13.5%
47	1-2 years	0.0%	7.1%	14.3%	9.9%
48	2+ years	0.0%	0.0%	1.9%	1.4%
49	Sub-total	100%	100%	100%	100%
50	Total Chains Started	3	8	28	38
51	Total Loops Completed	0	3	2	3
53	Number of broken chains	3	2	2	0
54	Bridge donors held	9	29	61	75
55	Percent of broken chains	33%	7%	3%	0%

# Medical Board

**Yolanda Becker, MD**  
*Chicago, IL*

Professor of Surgery  
Director, Kidney and Pancreas Program  
University of Chicago

**Michael Cecka, PhD**  
*Los Angeles, CA*

NKR Immunogenetics Director  
Professor, Department of Pathology at UCLA  
Director of Clinical Research, UCLA Immunogenetics Center  
Chair NKR Histocompatibility Committee

**Marian Charlton, RN**  
*New York, NY*

Chief Transplant Coordinator  
New York Presbyterian Hospital/Cornell University Medical Center  
Chair NKR Operations Committee

**Gabriel Danovitch, MD**  
*Los Angeles, CA*

Medical Director UCLA Kidney & Pancreas Program  
Ronald Reagan UCLA Medical Center  
Professor, David Geffen School of Medicine at UCLA

**Michael Dattoli, MD**  
*Sarasota, FL*

Founder & Physician-in-Chief  
Dattoli Cancer Center & Brachytherapy Research Institute

**Connie Davis, MD**  
*Seattle, WA*

NKR Medical/Governmental Policy Advisor  
Professor of Medicine, University of Washington  
Medical Director Kidney & Pancreas Transplant Programs

**Howard Gebel, PhD**  
*Atlanta, GA*

Professor Department of Pathology  
Co-Director, Histocompatibility and Molecular Immunogenetics Lab  
Emory University Hospital

**Pam Heckathorn Hale**  
*Los Angeles, CA*

Kidney Transplant Recipient  
Public Member

**Valerie Johnson, MD, PhD**  
*New York, NY*

Chief, Division of Pediatric Nephrology  
New York Presbyterian Hospital/Cornell University Medical Center  
Associate Professor of Clinical Pediatrics Cornell University

**Sandip Kapur, MD**  
*New York, NY*

Chief Transplantation, Surgical Director Kidney & Pancreas Program  
New York Presbyterian Hospital/Cornell University Medical Center  
Associate Professor of Surgery Cornell University

**Steven Katznelson, MD**  
*San Francisco, CA*

Medical Director, Kidney & Pancreas Transplant Programs  
Vice Chairman, Barry Levin Department of Transplantation  
California Pacific Medical Center

**Debbie Mast,**  
*Palo Alto, CA*

Database Administrator/Financial Manager  
Solid Organ Transplant/VAD Program  
Stanford Hospital and Clinics

# Medical Board

**Suzanne McGuire, RN**  
*Los Angeles, CA*

High Risk & Living Donor Exchange Transplant Coordinator  
Kidney and Pancreas Transplant Program  
Ronald Reagan UCLA Medical Center

**Marc Melcher, MD, PhD**  
*Palo Alto, CA*

Chair, NKR Research Committee  
Assistant Professor of Surgery  
Stanford University Medical Center  
Lucile Packard Children's Hospital

**John Milner, MD**  
*Chicago, IL*

Associate Professor of Surgery Loyola  
Director of Living Donor and Chain/Paired Exchange Transplantation  
Loyola University Medical Center

**Marie Morgievlch, APN**  
*Livingston, NJ*

Transplant Nurse Practitioner, Living Donor Institute  
Saint Barnabas Medical Center

**John Roberts, MD**  
*San Francisco, CA*

Chief of the UCSF Transplant Service  
Professor of Surgery at UCSF

**Sally Satel, MD**  
*Washington, DC*

Resident Scholar, American Enterprise Institute  
Lecturer, Yale University School of Medicine  
Psychiatrist, Oasis Drug Treatment Clinic & Kidney Recipient

**David Serur, MD**  
*New York, NY*

NKR Medical Director  
Medical Director, Kidney & Pancreas Transplant, Rogosin  
Associate Professor Medicine & Surgery Cornell University  
Attending Physician & Surgeon New York Presbyterian Hospital

**Helen Spicer, RN**  
*Richmond, VA*

Director, Kidney Transplant Services  
Virginia Transplant Center  
Henrico Doctors' Hospital

**Angela Stimpson,**  
*Schenectady, NY*

Good Samaritan Donor  
Public Member

**Barry Straube, MD**  
*Washington, DC*

Nephrologist & Transplant Physician  
Former Chief Medical Officer Centers for Medicare & Medicaid

**Jeffrey Veale, MD**  
*Los Angeles, CA*

Director Donor Exchange Program & Surgeon  
Ronald Reagan UCLA Medical Center  
Assistant Professor, David Geffen School of Medicine at UCLA