

Paired Exchange Results Quarterly Report

As of December 31, 2016

Table of Contents

Message From the Founder	1
Press Release	2
Transplants Facilitated	2
2016 KPD as Percentage of LD TXPs.....	3
Top 5 CLC Centers	3
NKR Graft Survival Advantage	4
NKR Patient Survival Advantage	4
Patients Waiting > 1 Year	5
Patients Waiting > 1 Year by Center	5
Wait Time Distribution.....	6
Patients Waiting > 1 Year by cPRA.....	6
Transplanted Patient Median Wait Time.....	7
Pool Composition by cPRA.....	7
Transplanted Patients with cPRA > 80%	8
Transplanted Patients by cPRA.....	8
Percent of Pool Matched and/or Transplanted	9
New Pair Enrollments	9
Pool Size	10
Non-Directed Donor Registrations.....	10
Non-Directed Donor Referrals	11
Chains Started.....	11
Chain and Loop Statistics.....	12
Blood Type Distribution Statistics	12
Great HLA Matches	13
Compatible Pairs Transplanted	14
Failure Rates	15
Non XM Swap Failures & Transplants Impacted.....	15
XM Swap Failures & Transplants Impacted.....	16
Patients Deleted	16
NKR Wait Times	17
Bridge Donor Median Wait Times.....	17
Bridge Donor Wait Times.....	18
NKR Transplants per Bridge Donor	18
Broken Chains.....	19
Summary Report	19
Detail Report.....	20
Advanced Donation Program Summary	20
Advanced Donation Program Case Details.....	21
ADP Recipient Wait Time	21
ADP Wait Time Analysis	22
Advanced Donation Program	22
ADP Recipients Outstanding vs. Chains Started.....	23
ADP Recipients Not Transplanted	23
Program Statistics	24-25



Message from the Founder

We are pleased to report that we achieved our 2,000th transplant milestone on January 5th of 2017. This important milestone was crossed on the heels of a record setting 55 transplants completed in the month of December. In 2016 we facilitated 399 transplants which represent 64% of the 628 paired exchange transplants performed in the United States last year as reported by the OPTN. Additionally, active NKR Member Centers made up 16 of the top 20 KPD centers in 2016. NKR facilitated transplants have accounted for all of the growth in KPD transplants in the United States since 2010.

One growth area, allowing us to shorten wait times and find superior matches, is the inclusion of compatible pairs in KPD. In 2016, NKR compatible pairs doubled, driving down our longest wait time for matchable pairs from 36 months to 16 months. Our ability to find superior HLA matches from the largest pool of living donors in the world is evident in our graft survival numbers. The NKR graft failure rate at 5 years is 60% less than the typical U.S. living donor transplant (NKR 94.2% vs US 85.4%). We believe the superior NKR outcomes will attract an increasing number of compatible pairs who seek better HLA matches which are associated with better long term outcomes.

After a significant investment in cutting edge technology and a lot of effort by our Member Centers, 100% of our donors now have CT scans uploaded into our system. This technology is reducing late stage donor declines (due to anatomy) and speeding up the matching process. We have also made major investments in collecting donor blood for cryo storage and plan to make cryo cells a condition of donor activation on February 15th. Utilization of cryo cells for rapid cross matching helps to find matches for highly sensitized patients, reduces swap failures and speeds up the matching process.

We recently completed the world's first trans-Pacific paired exchange kidney swap between Hawaii and the U.S. mainland. These long distance kidney shipments open the door to international swaps which will require similar logistics.

It is the ongoing dedication and effort of our Member Centers that enables us to continue breaking records and achieving new milestones. Thank you for your support and keep up the great work.

Sincerely,

A handwritten signature in blue ink, appearing to read 'G Hil', with a long horizontal flourish extending to the right.

Garet Hil
Founder & CEO
National Kidney Registry

PRESS RELEASE

National Kidney Registry Facilitates 2,000th KPD Transplant The most paired exchange transplants in the world

(BABYLON, N.Y., Jan. 5, 2017) The National Kidney Registry announced the successful completion of their 2,000th paired exchange transplant which took place last night at UCLA Medical Center. This milestone represents the most paired exchange transplants facilitated by a single registry and represents over a billion dollars in dialysis savings to the U.S government and approximately \$300 million in savings to health insurance companies.

Dr. Jeff Veale, the Director of the UCLA Exchange Program, which completed the 2000th transplant, commented, "We have had a tremendous amount of success getting over 210 patients transplanted through the National Kidney Registry; 30% of whom were highly sensitized. The coordination among the 80 Member Centers is a testament to the amazing teamwork of the dedicated transplant professionals across the nation.

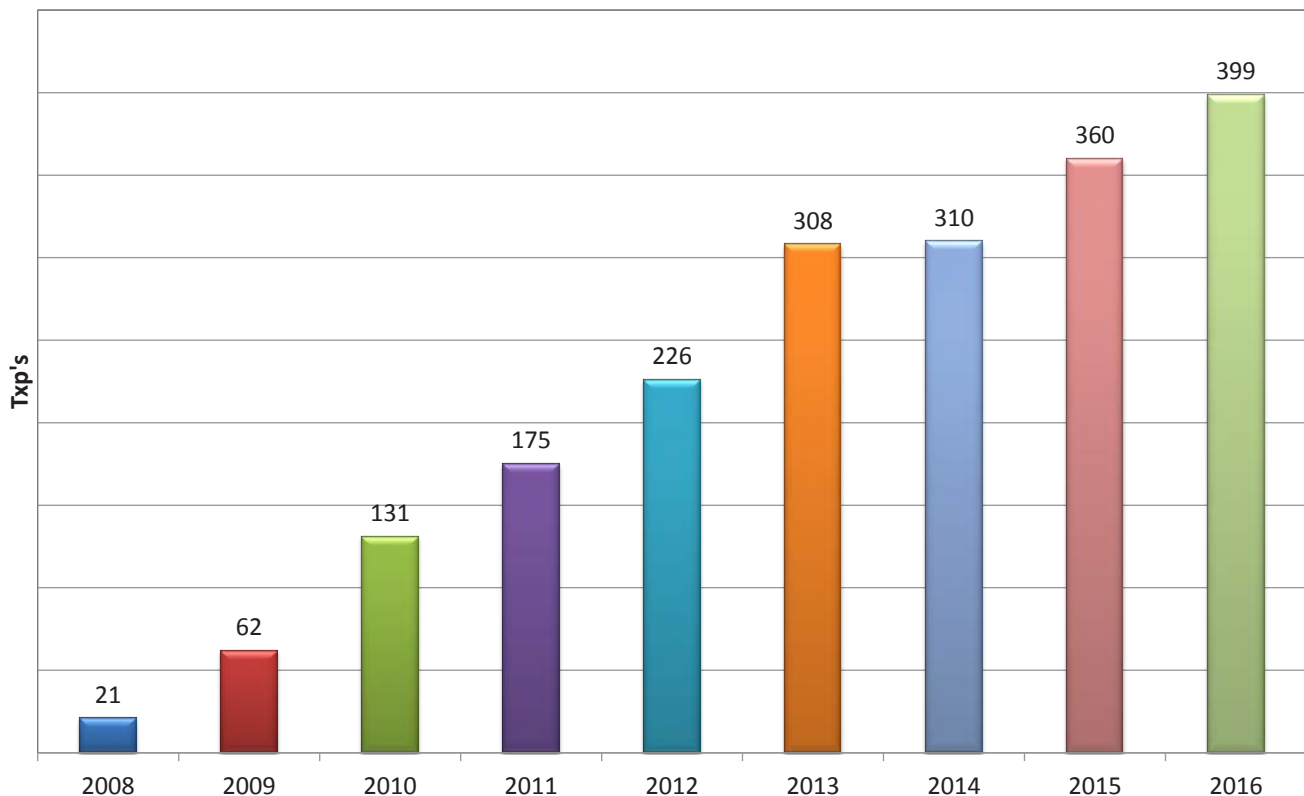
"Eight years ago, on Valentine's Day in 2008, the National Kidney Registry facilitated its first paired exchange transplants at New York Presbyterian Weill Cornell Medical Center, the founding NKR center. Dr. Sandi Kapur, Chief of Transplant Surgery at Cornell said, "Paired exchange has been a blessing to so many of our patients that had willing but incompatible donors. After completing approximately 160 paired exchange transplants with the NKR over the past eight years, we only have two patients that are still waiting for a match. Most of our patients with incompatible donors are getting matched and transplanted in less than three months".

Garet Hil, Founder and CEO of the National Kidney Registry and a living kidney donor himself, added, "Not only were the 2,000 patients directly helped but these same patients were removed from the deceased donor wait list when they were transplanted, allowing thousands of other patients on dialysis to move up on the wait list and receive a transplant sooner".

About National Kidney Registry

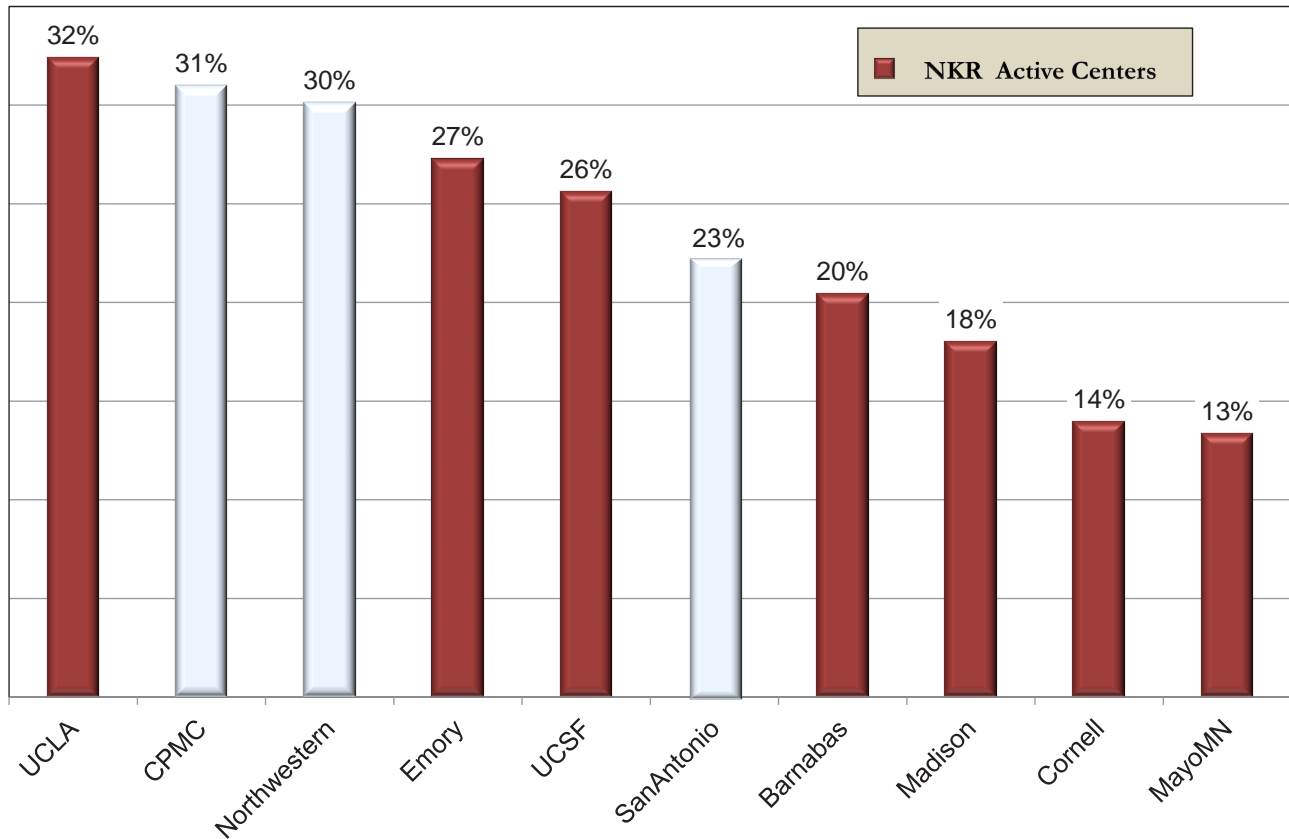
The National Kidney Registry (www.kidneyregistry.org) is a nonprofit organization with the mission to save and improve the lives of people facing kidney failure by increasing the quality, speed, and number of living donor transplants.

Transplants Facilitated



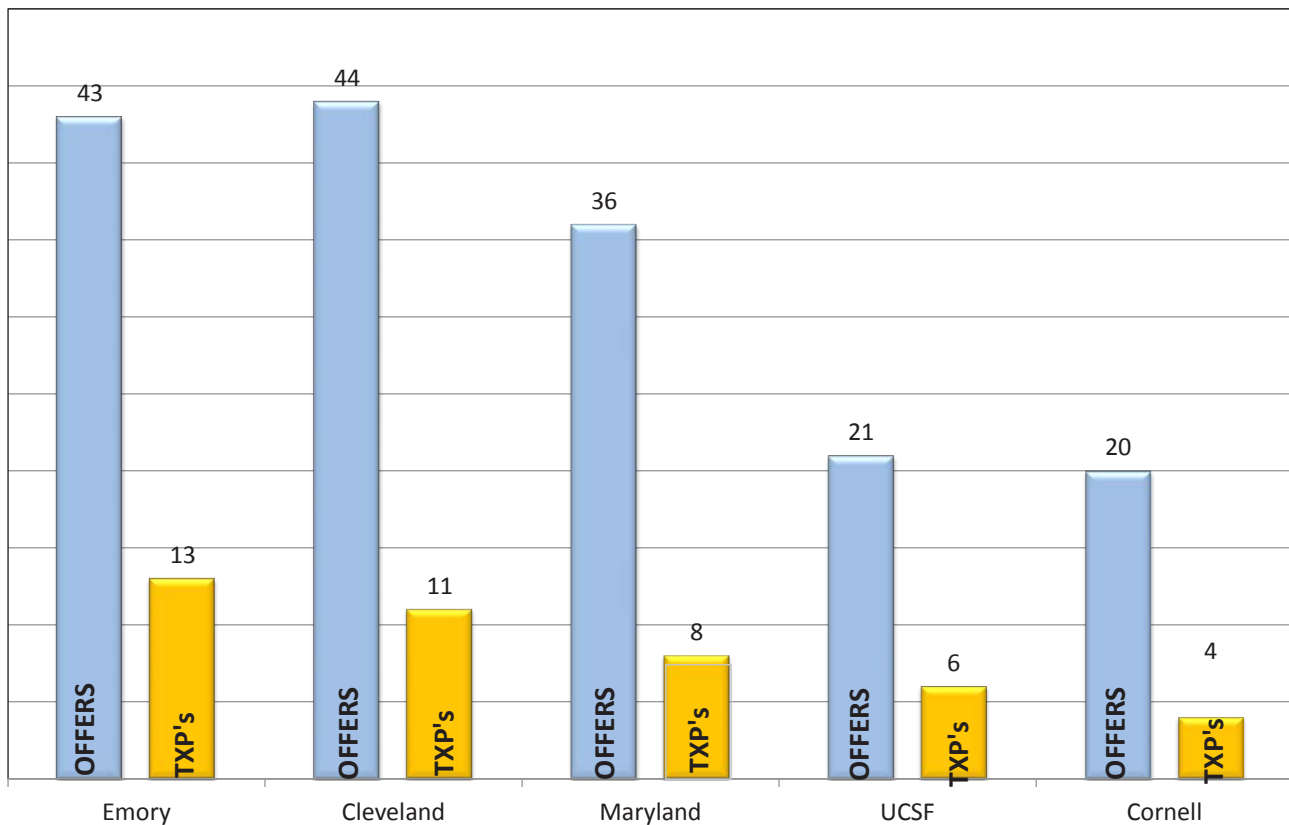
2016 KPD as Percentage of LD TXPs

Top 10 KPD Centers



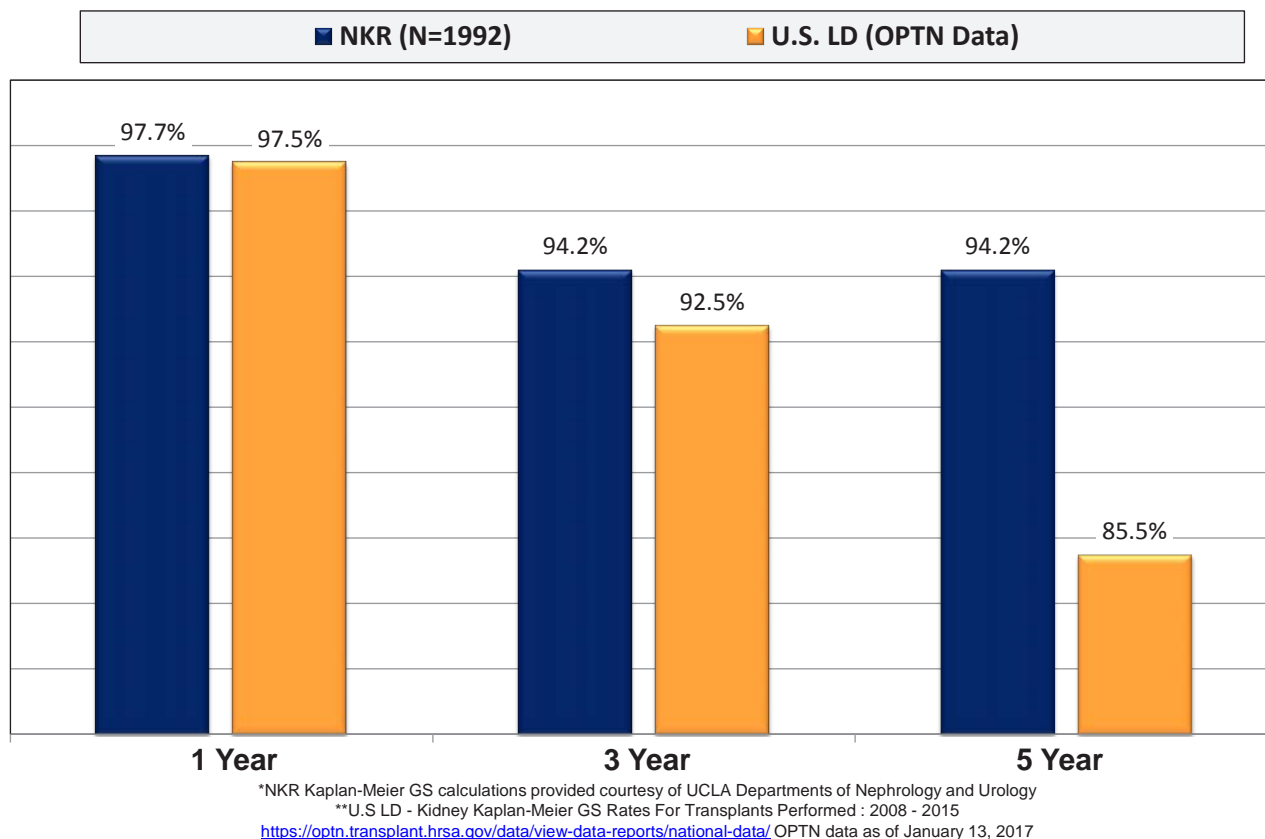
Top 5 CLC Centers

CLC Driven Match Offers – 4/1/15 – 12/31/16



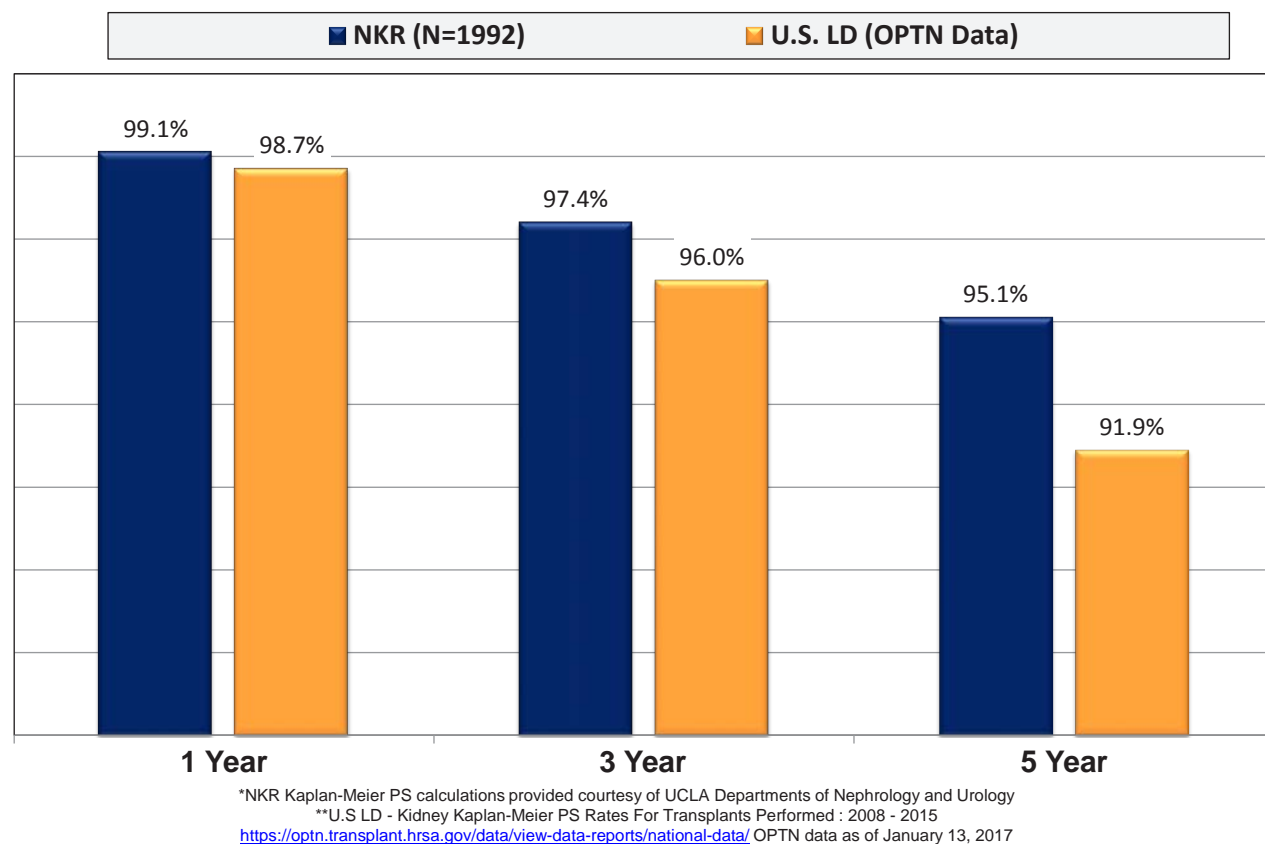
NKR Graft Survival Advantage

NKR Transplants vs. U.S. Living Donor Transplants
As of 12/31/2016



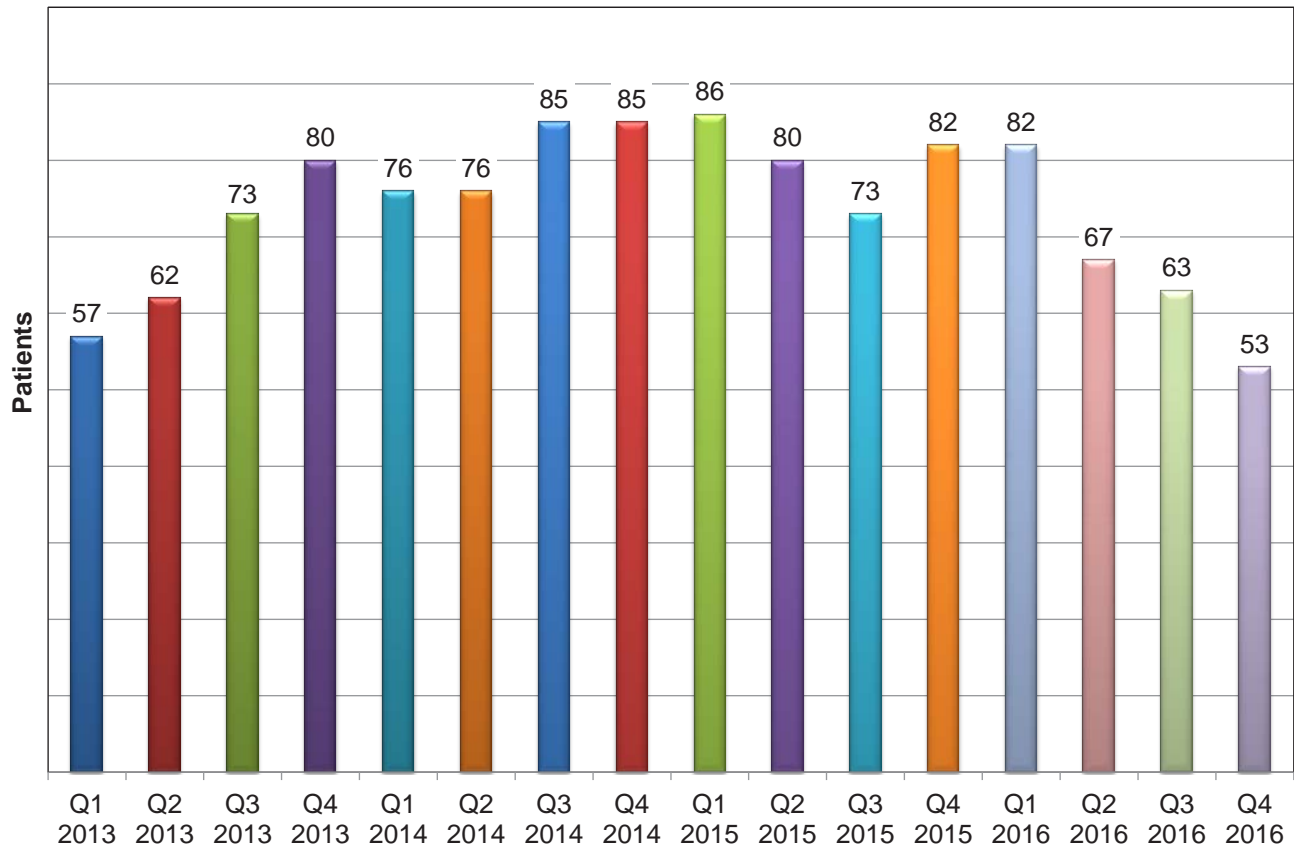
NKR Patient Survival Advantage

NKR Transplants vs. U.S. Living Donor Transplants
As of 12/31/2016



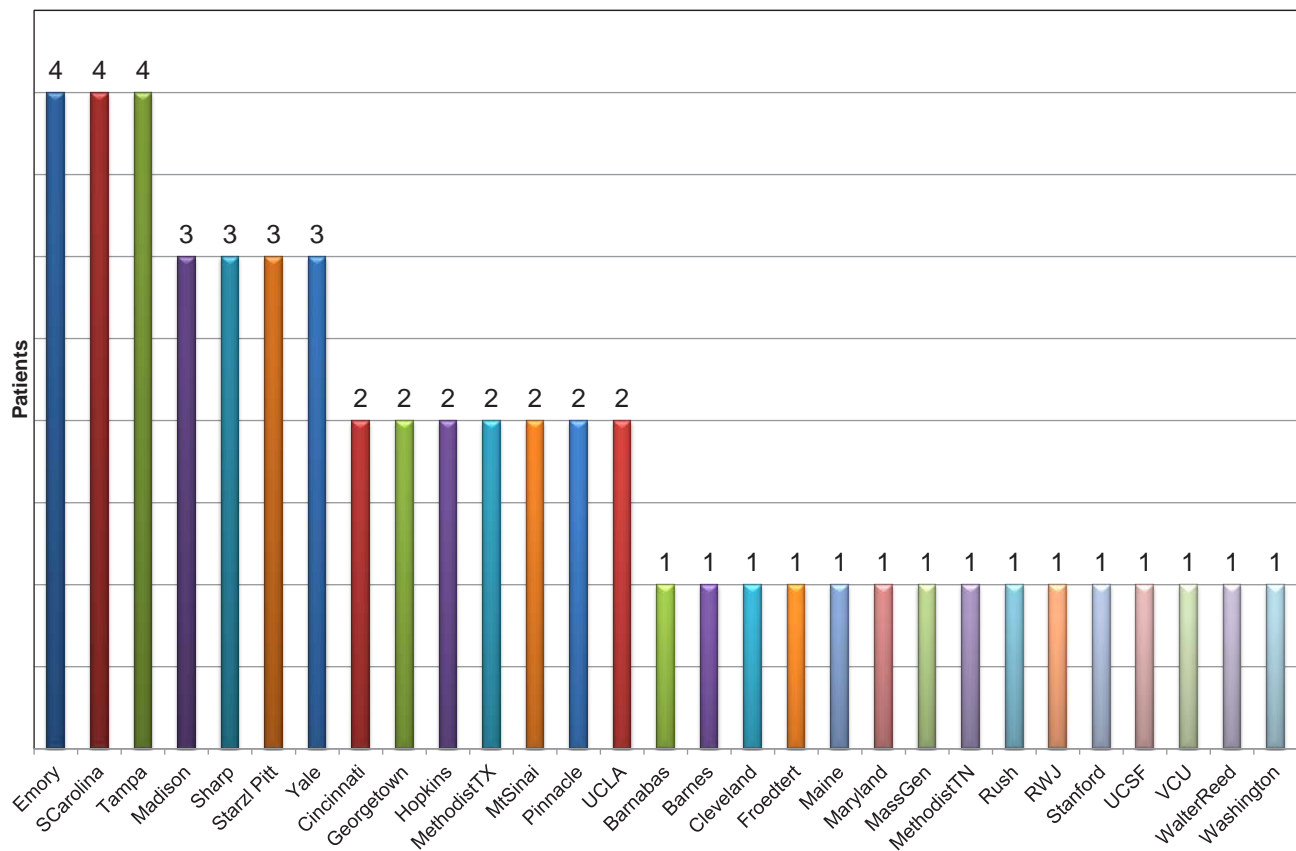
Patients Waiting > 1 Year

As of 12/31/2016



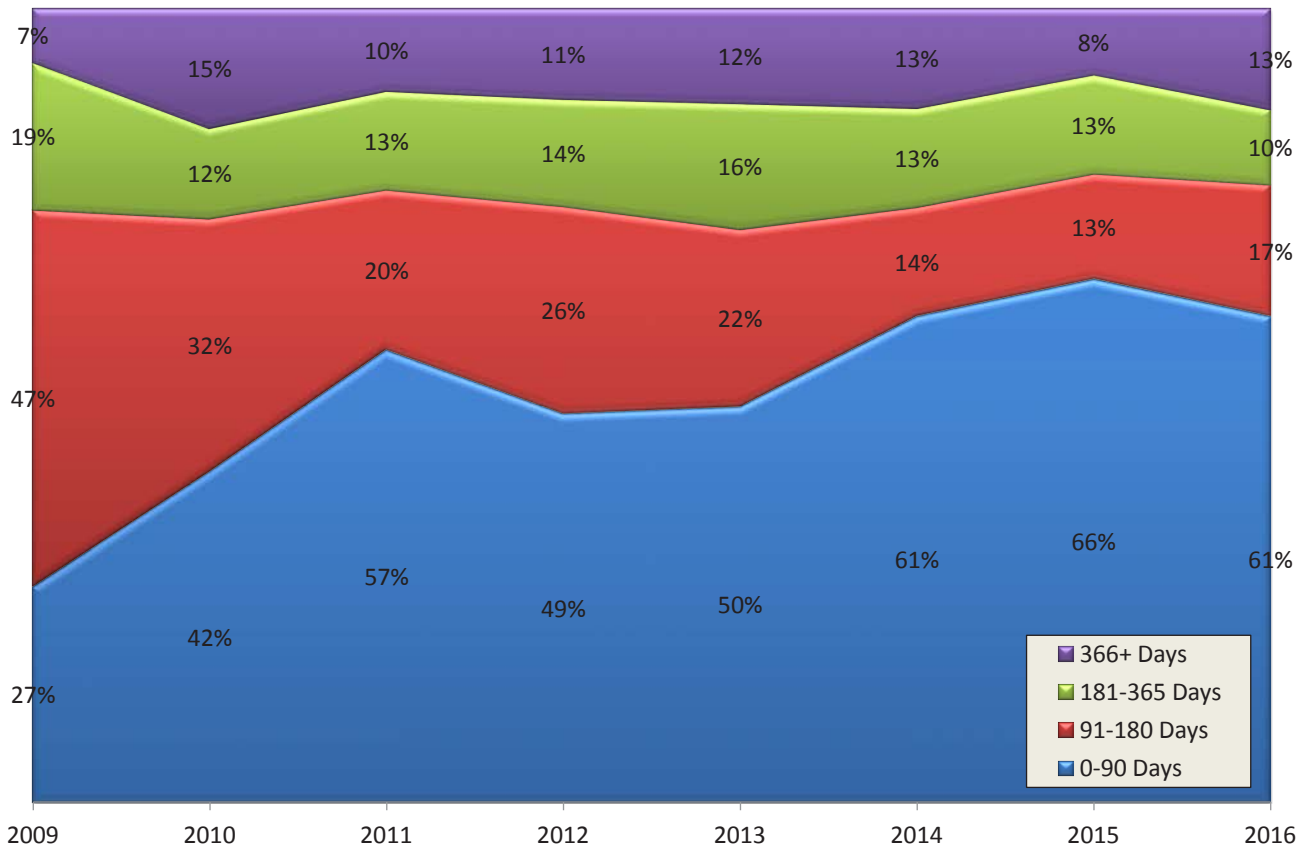
Patients Waiting > 1 Year by Center

As of 12/31/2016



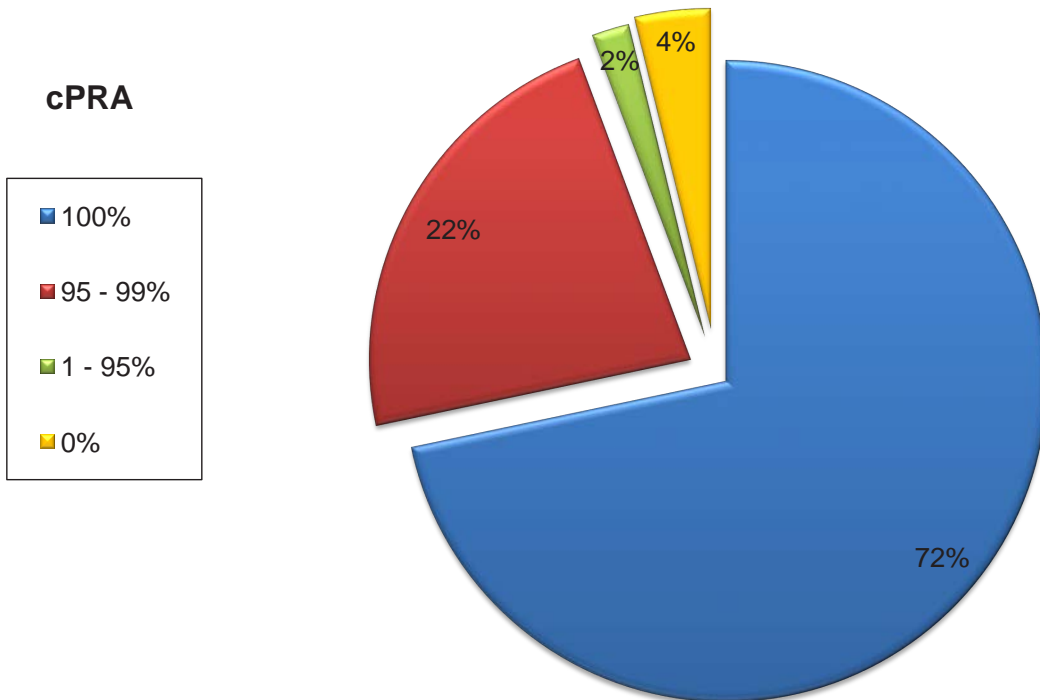
Wait Time Distribution

Transplanted Pairs



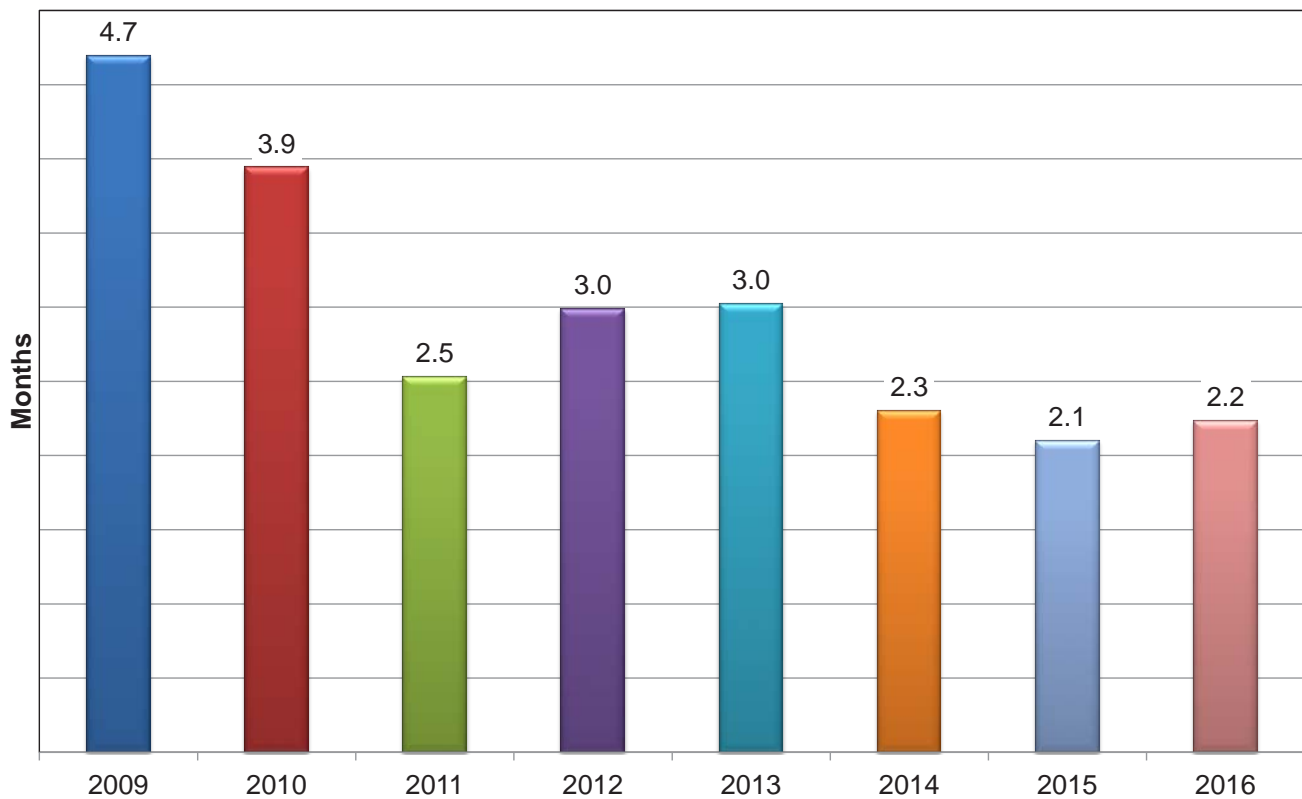
Patients Waiting > 1 Year by cPRA

As of 12/31/2016



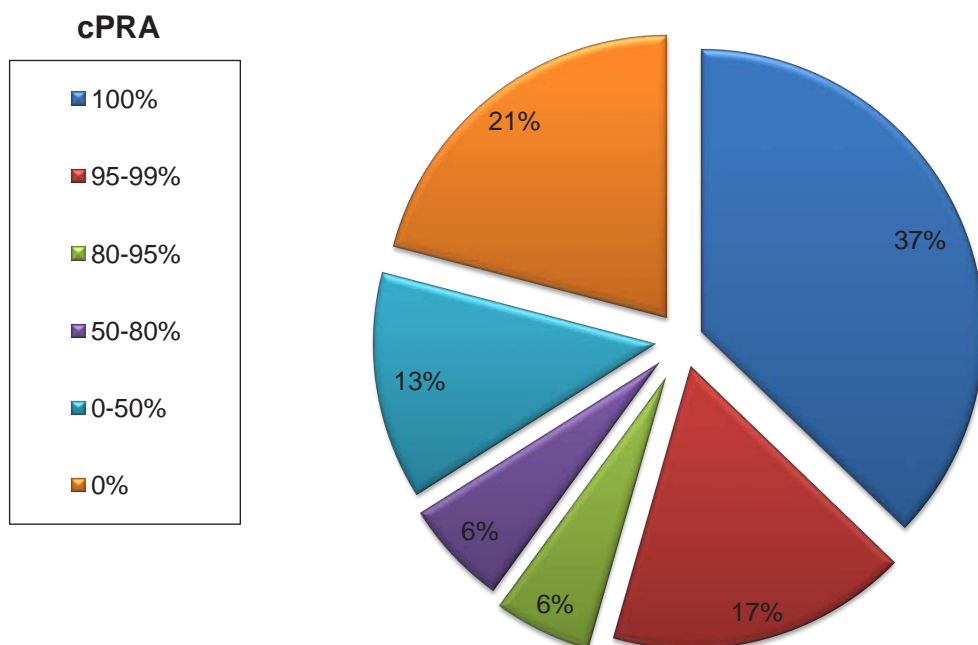
Transplanted Patient Median Wait Time

Wait times of patients transplanted during prior 12 months
As of 12/31/2016

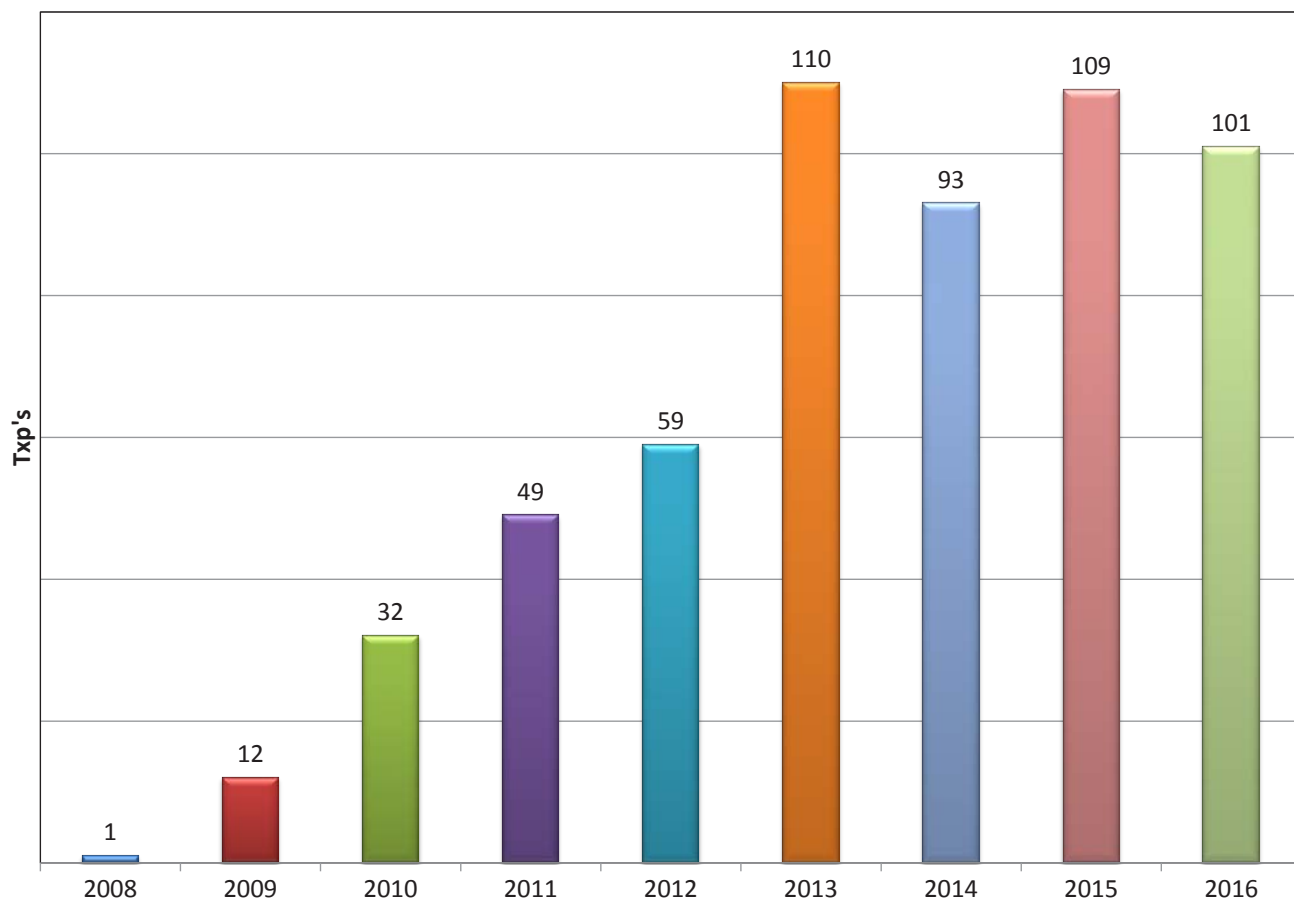


Pool Composition by cPRA

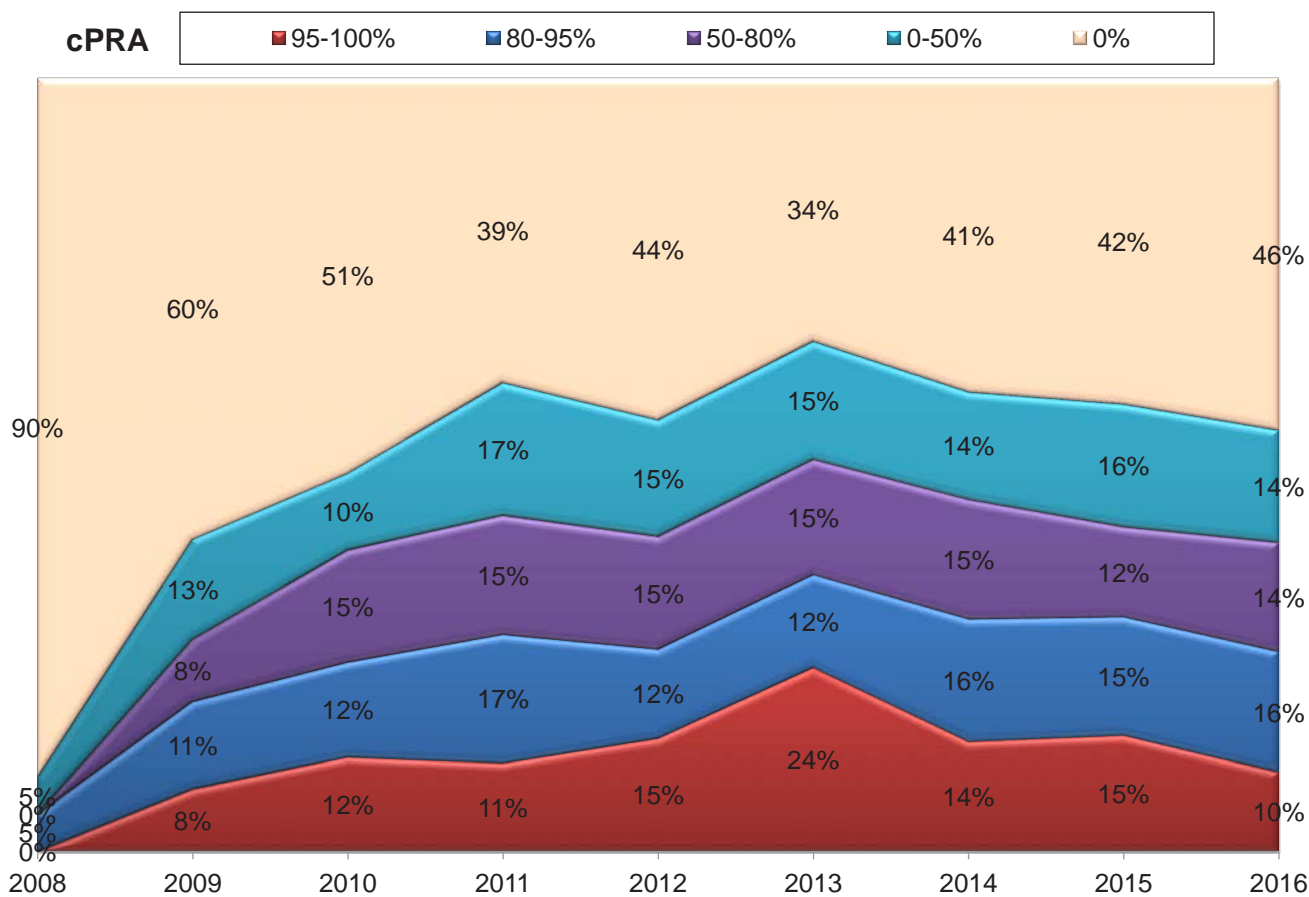
As of 12/31/2016



Transplanted Patients with cPRA > 80%

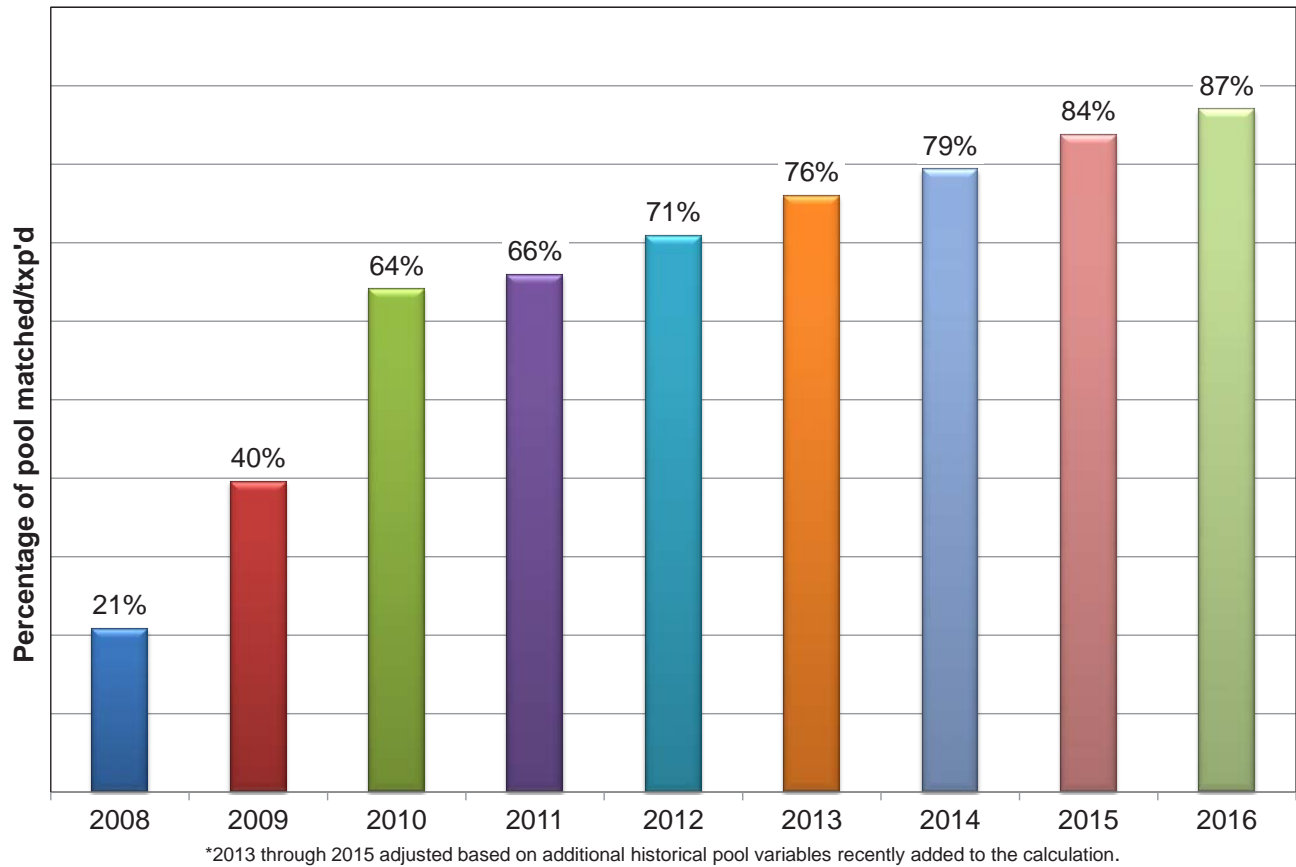


Transplanted Patients by cPRA



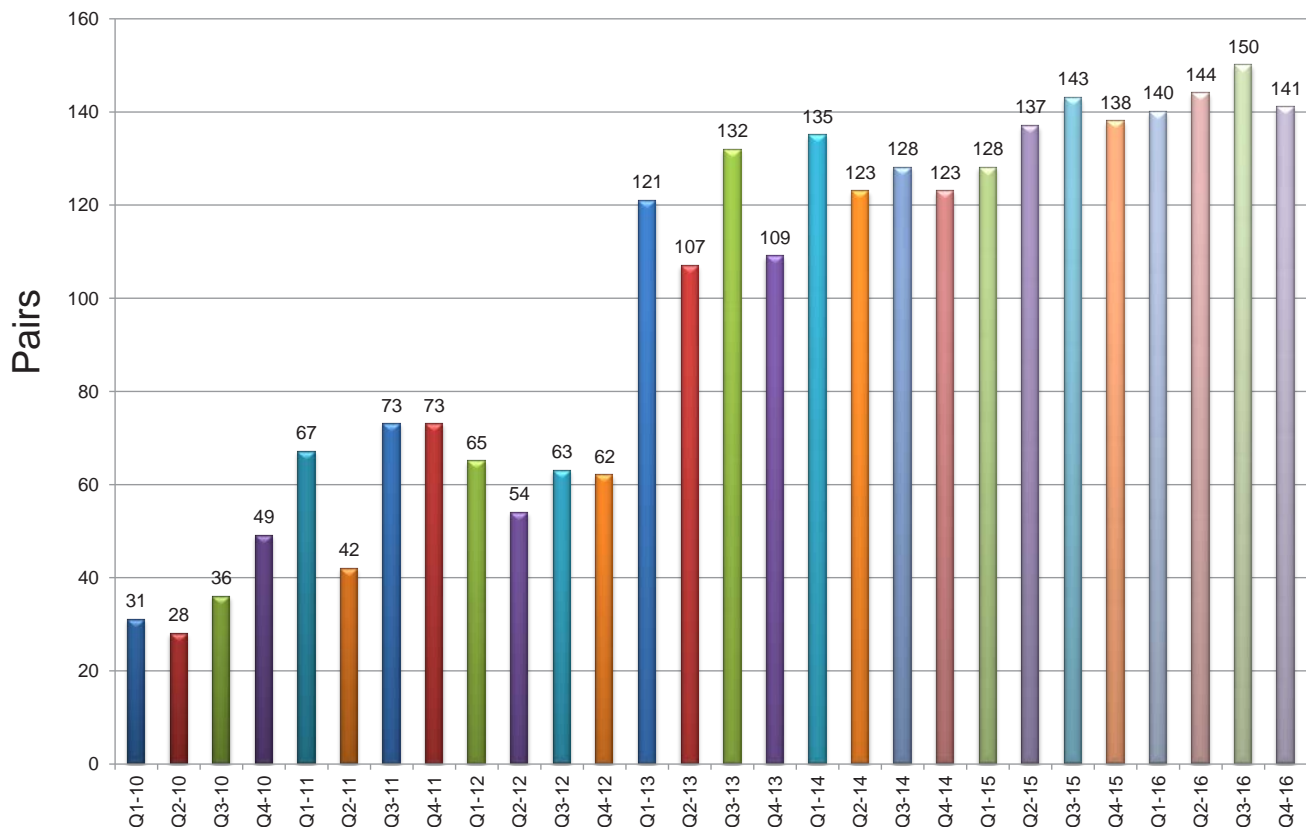
Percent of Pool Matched and/or Transplanted

As of 12/31/2016



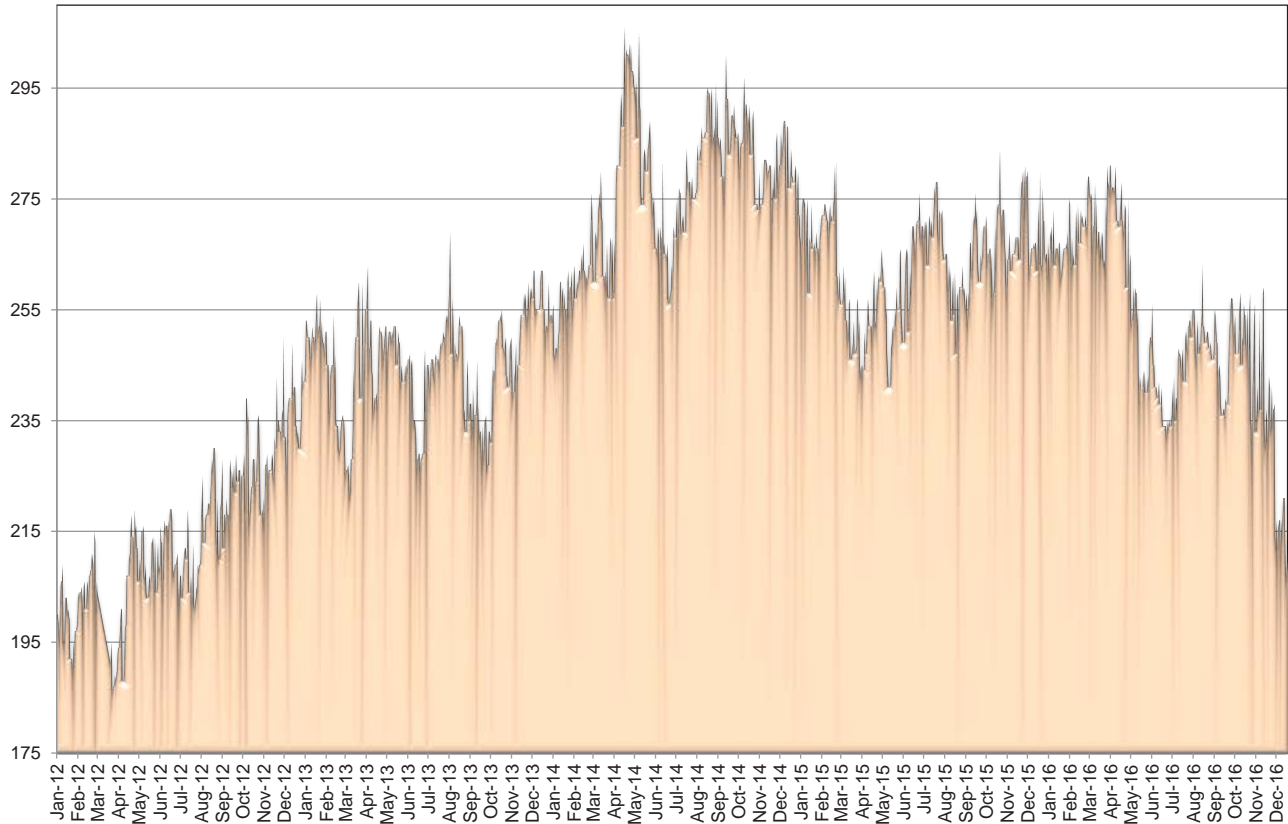
New Pair Enrollments

Patients available for match runs



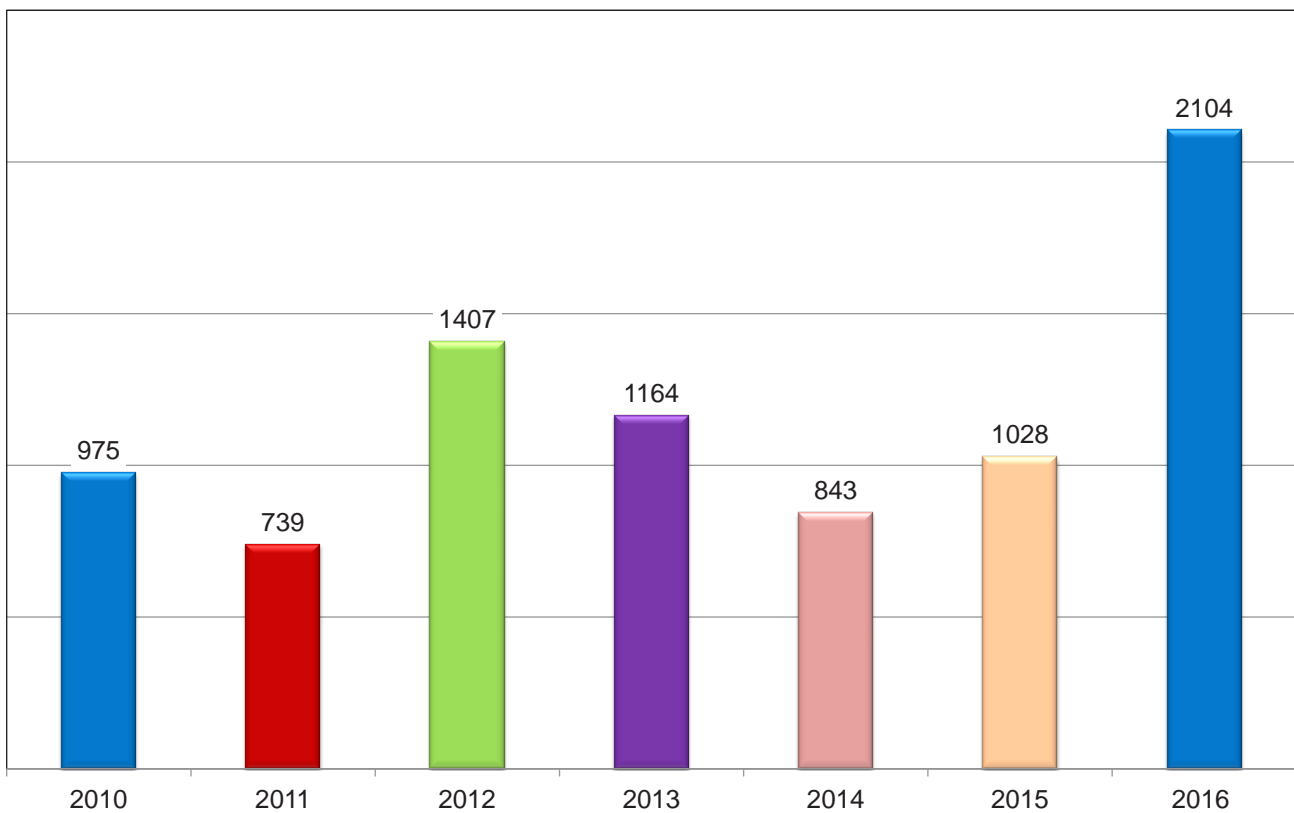
Pool Size

Unmatched patients by day
1/1/2012 – 12/31/2016



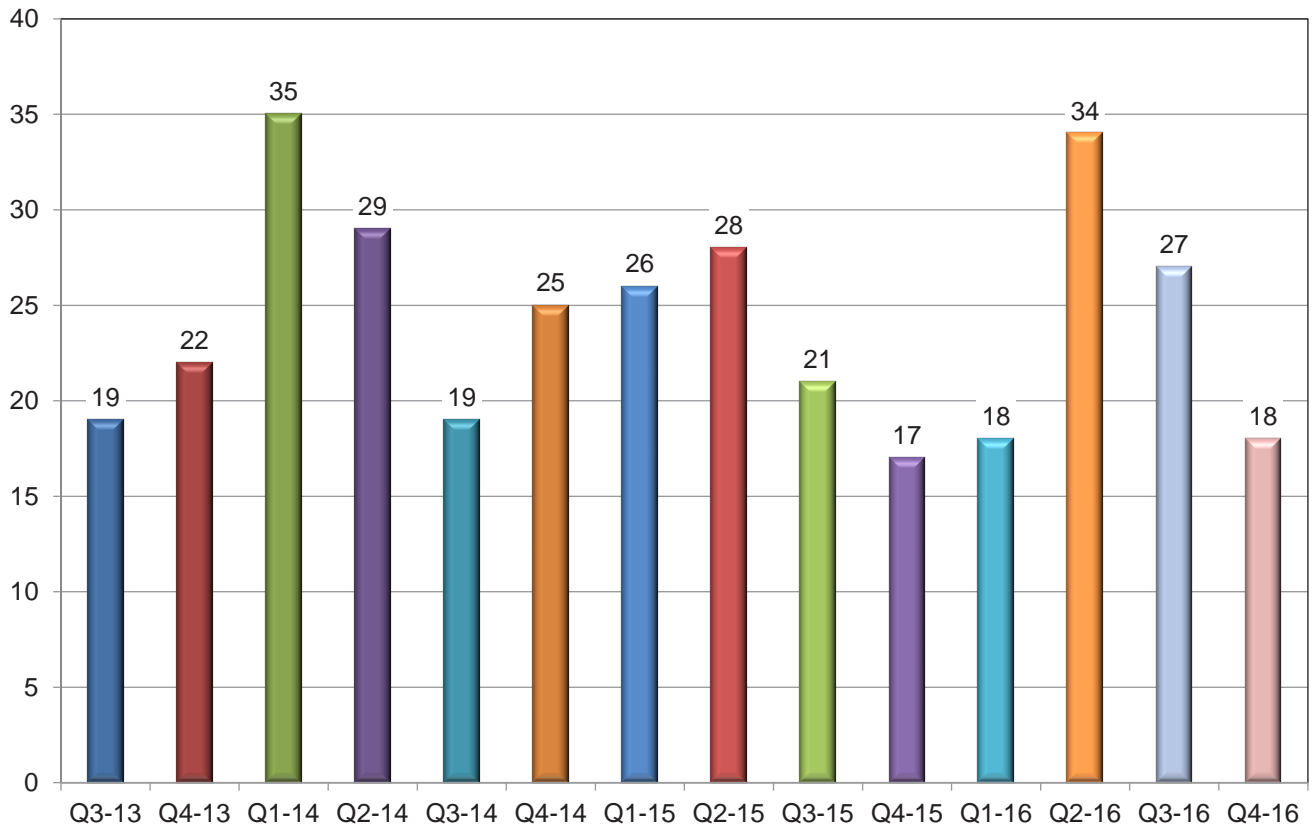
Non-Directed Donor Registrations

Via NKR Web Site



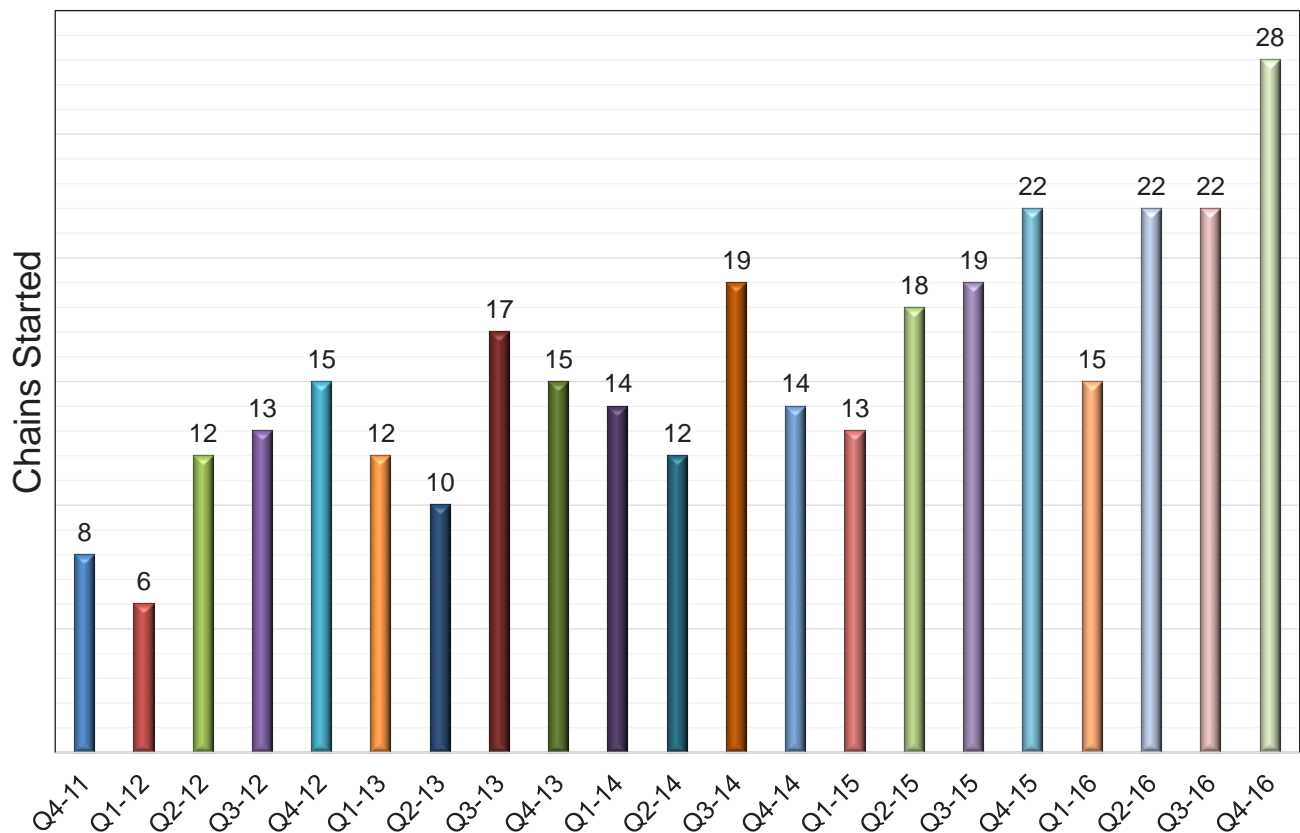
Non-Directed Donor Referrals

Referred to NKR member centers



Chains Started

Via non-directed donors



Chain and Loop Statistics

Category	Count	Mean Length	Transplants
Ended	372	4.55	1693
Broken	20	4.00	80
Active	5	2.00	10
Chain Total	397	4.49	1783
Loops	89	2.35	209
Total	486	4.10	1992

**Updates as of 1/1/17

Blood Type Distribution Statistics

As of 12/31/16

Transplanted Pairs by ABO Combination

Recipient ABO	Paired Donor ABO	Qty	%
O	A	365	22.0%
O	O	298	17.9%
A	A	171	10.3%
B	A	150	9.1%
A	O	145	8.8%
O	B	134	8.1%
A	B	122	7.4%
B	O	79	4.8%
A	AB	51	3.1%
B	B	46	2.8%
B	AB	34	2.1%
O	AB	19	1.1%
AB	A	14	0.8%
AB	O	14	0.8%
AB	AB	11	0.7%
AB	B	5	0.3%
Total	==>	1,658	100%

Transplanted Paired Recipients

ABO	Qty	%
O	812	49.0%
A	499	30.1%
B	303	18.3%
AB	44	2.7%
Total	1,658	100%

Paired Donors Donated

ABO	Qty	%
A	700	42.2%
O	535	32.3%
B	307	18.5%
AB	116	7.0%
Total	1,658	100%

**All Chain end recipients, NDD and ADP donors excluded from counts above

Great HLA Matches

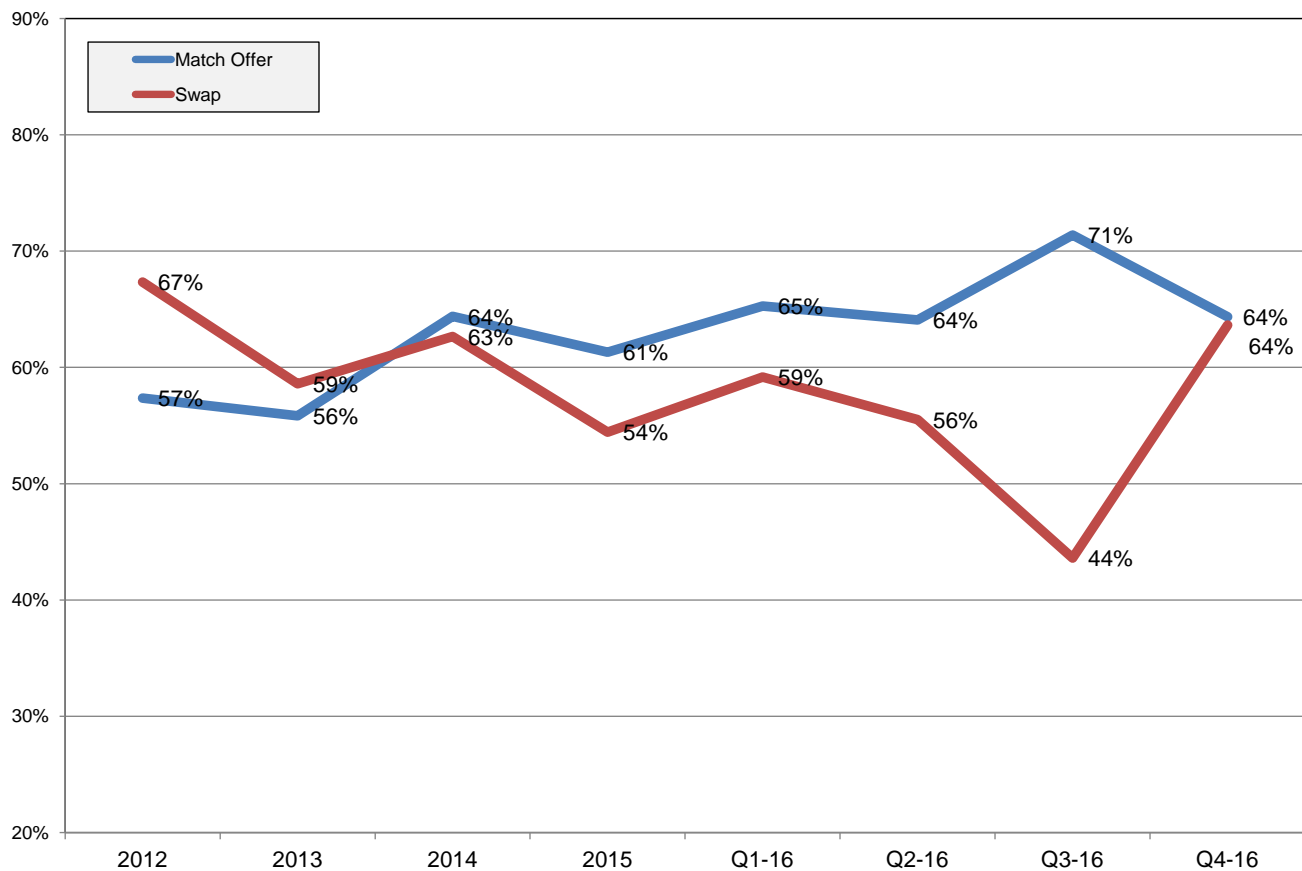
> 80 Match Points

Count	Recipient Center	Swap #	XP Date	Donor ABO	Recipient ABO	NKR cPRA	Wait Time In Months	Donor Age ATOT	Recipient Age ATOT	HLA Points
1	ChristHosp	952	1/18/2017	A	A	99	1	57	34	100
2	UMinn	928	11/8/2016	A	A	100	4	66	12	100
3	Cincinnati	884	8/31/2016	A	A	73	1	28	40	100
4	OSU	509	8/30/2016	A	A	91	1	38	67	100
5	SCarolina	459	2/11/2016	A	A	100	3	64	53	100
6	Madison	442	12/22/2015	A	A	97	6	22	63	100
7	UMinn	440	11/19/2015	O	O	100	5	23	20	100
8	UCLA	357	2/17/2015	A	A	100	34	39	52	100
9	Emory	351	12/11/2014	A	A	100	5	25	33	100
10	Hopkins	330	11/13/2014	A	O	96	1	41	38	100
11	Loyola	324	8/5/2014	A	A	100	1	37	55	100
12	Madison	674	1/9/2014	O	A	99	5	29	33	100
13	Barnabas	182	10/3/2012	A	A	92	4	51	50	100
14	Barnes	105	3/31/2011	A	A	100	7	60	32	100
15	UCSF	58	6/15/2010	A	A	100	6	47	58	100
16	Maryland	939	12/15/2016	AB	AB	58	0	38	53	90
17	OSU	497	7/12/2016	A	A	99	5	62	48	90
18	Pinnacle	473	4/5/2016	A	A	96	1	30	54	90
19	Cornell	447	12/9/2015	A	A	7	2	31	14	90
20	Emory	780	3/12/2015	O	O	7	6	46	21	90
21	MethodistTN	266	1/29/2014	A	A	89	2	44	66	90
22	Barnabas	266	1/16/2014	O	O	99	23	54	67	90
23	Madison	221	4/30/2013	O	O	99	17	45	52	90
24	Barnabas	187	12/4/2012	A	A	94	2	48	45	90
25	VAHD	161	6/12/2012	O	O	100	7	29	62	90
26	MethodistTX	124	12/7/2011	A	A	99	14	39	68	90
27	UCLA	124	8/31/2011	O	O	100	12	33	22	90
28	CPMC	115	6/22/2011	B	B	33	1	44	62	90
29	Starzl Pitt	109	4/21/2011	A	A	70	2	59	49	90
30	Pinnacle	901	10/20/2016	A	A	0	0	29	24	85
31	UCLA	521	7/20/2016	A	A	89	2	45	63	85
32	MethodistTX	442	1/20/2016	O	O	94	7	46	49	85
33	LomaLinda	406	8/18/2015	A	A	100	1	53	50	85
34	Barnabas	393	7/16/2015	A	A	100	1	37	64	85
35	Madison	792	6/3/2015	A	A	94	3	49	54	85
36	Madison	383	5/19/2015	O	O	98	6	44	47	85
37	MethodistTN	365	3/4/2015	B	B	100	4	53	51	85
38	Barnabas	330	11/13/2014	O	O	96	2	33	49	85
39	PorterAH	322	9/3/2014	O	O	27	5	29	24	85
40	Barnabas	304	7/17/2014	O	O	99	1	53	62	85
41	Cornell	733	7/8/2014	A	A	0	1	57	67	85
42	Barnes	266	1/16/2014	A	A	100	13	33	40	85
43	SCarolina	266	1/14/2014	O	O	89	3	55	44	85
44	UCLA	659	10/24/2013	O	O	100	25	54	56	85
45	Penn	199	12/11/2012	B	B	87	5	47	52	85
46	Madison	169	7/25/2012	B	B	97	3	30	62	85
47	UCLA	538	5/22/2012	A	O	88	7	28	12	85
48	Intermtn	118	6/29/2011	O	O	96	16	27	27	85
49	Allegheny	62	5/6/2010	A	A	0	5	60	70	85
50	Barnabas	894	1/10/2017	O	B	100	5	40	51	80
51	Madison	332	11/4/2014	O	O	96	20	63	42	80
52	UCLA	258	10/3/2013	A	A	98	1	47	36	80
53	CPMC	19	7/31/2009	A	A	0	5	51	54	80

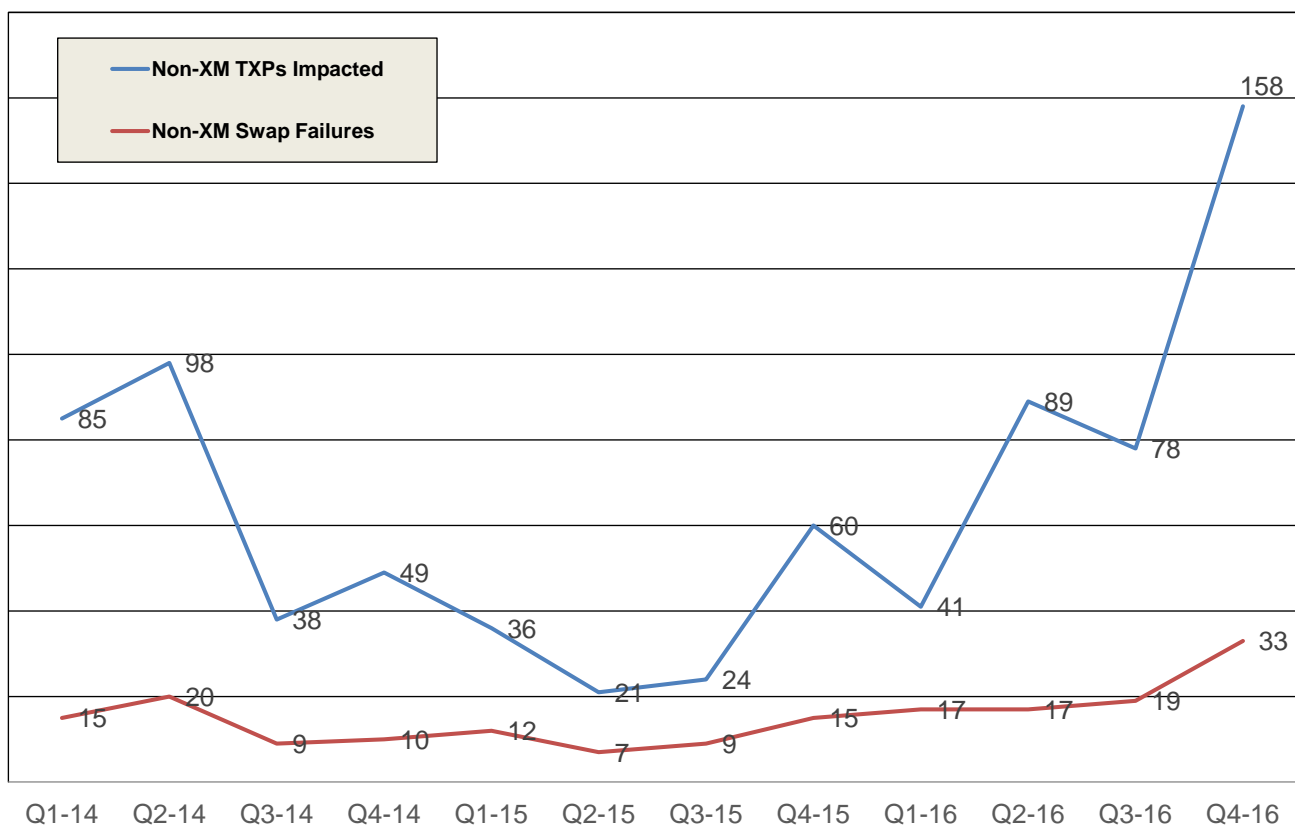
Compatible Pairs Transplanted

#	Recipient Center	Txp Date	Recipient ABO	Paired Donor ABO	Donor ABO	Recipient Age	Paired Donor Age	Donor Age	Age Advantage	Donor HLA Pts	Paired Donor HLA Pts	HLA Points Advantage	Paired Donor Relationship	Additional Txp's	Additional Txp's cPRA >80
1	Hopkins	10/3/2013	A	O	A	19	65	38	27	25	50	-25	Other	2	0
2	Cornell	11/20/2013	O	O	O	34	37	59	-22	75	25	50	Spouse	3	1
3	Cleveland	12/18/2013	O	O	O	43	41	55	-14	25	0	25	internet friend	4	2
4	Maine	1/28/2014	A	O	A	43	40	53	-13	75	10	65	Spouse	4	0
5	UCLA	1/29/2014	A	A	A	7	34	37	-3	60	50	10	Mother	3	0
6	Dartmouth	4/9/2014	O	O	O	45	37	43	-6	35	50	-15	Friend	2	1
7	Stanford	4/23/2014	O	O	O	29	66	24	42	25	50	-25	Father	0	0
8	Cornell	4/23/2014	O	O	O	3	24	43	-19	0	0	0	Cousin	3	0
9	Madison	4/28/2014	O	O	O	62	57	39	18	45	10	35	Friend	6	2
10	Barnabas	6/11/2014	B	O	B	69	57	41	16	10	40	-30	Significant Other	3	0
11	UCSF	8/26/2014	O	O	O	28	57	22	35	10	85	-75	Father	5	1
12	MassGen	8/28/2014	A	O	A	69	51	33	18	60	0	60	niece through marriage	1	0
13	Emory	9/30/2014	A	A	A	18	52	37	15	50	65	-15	Father	2	0
14	Loyola	11/11/2014	A	O	A	42	43	48	-5	25	25	0	Spouse	2	1
15	Georgetown	4/28/2015	O	O	O	41	43	30	13	0	0	0	Spouse	2	2
16	Emory	5/13/2015	A	O	A	12	50	28	22	0	50	-50	Father	2	0
17	Stanford	5/21/2015	A	A	A	61	61	25	36	25	25	0	Spouse	2	0
18	Indiana	5/28/2015	A	A	A	32	57	48	9	25	65	-40	Mother	1	0
19	Penn	6/9/2015	B	O	B	41	43	44	-1	10	0	10	Spouse	2	0
20	Penn	6/25/2015	A	O	A	28	56	19	37	65	50	15	Mother	2	0
21	Barnabas	9/24/2015	AB	O	A	58	54	22	32	25	35	-10	Spouse	2	0
22	Barnabas	10/14/2015	B	O	B	36	48	40	8	0	0	0	Aunt	2	1
23	Maine	10/21/2015	A	A	A	34	21	30	-9	10	10	0	Met on Facebook	2	0
24	Maryland	11/11/2015	A	O	A	65	60	51	9	60	25	35	Spouse	2	0
25	GAREgents	12/1/2015	A	O	A	51	63	47	16	35	0	35	Friend	5	1
26	MassGen	12/1/2015	O	O	O	22	50	32	18	0	0	0	Friend	1	0
27	Cornell	12/9/2015	A	A	A	14	55	31	24	90	15	75	Father	2	0
28	Rush	4/12/2016	A	A	A	42	46	36	10	35	35	0	Spouse	0	0
29	Cornell	4/13/2016	AB	O	A	52	51	30	21	35	0	35	Friend	1	0
30	Madison	4/20/2016	A	O	A	58	46	45	1	35	25	10	Spouse	0	0
31	Emory	4/20/2016	B	O	B	23	70	46	24	0	65	-65	Other	3	0
32	Colorado	5/11/2016	O	O	O	64	50	45	5	25	25	0	Spouse	3	0
33	Emory	6/17/2016	A	O	A	30	62	47	15	25	75	-50	Mother	1	0
34	UVA	7/7/2016	A	A	A	34	65	39	26	0	50	-50	Father	4	0
35	Colorado	7/12/2016	AB	O	A	51	33	30	3	25	50	-25	Cousin	0	0
36	Indiana	7/14/2016	A	O	A	59	60	57	3	35	10	25	Spouse	0	0
37	Maryland	7/14/2016	A	O	A	49	26	40	-14	35	0	35	Friend	1	0
38	Cornell	7/19/2016	A	O	A	50	39	25	14	40	0	40	Friend	2	0
39	UCLA	7/21/2016	B	O	B	47	67	36	31	40	50	-10	mother	2	0
40	Penn	7/21/2016	O	O	O	33	58	35	23	25	35	-10	Other	4	3
41	Hopkins	10/4/2016	AB	A	AB	32	65	25	40	45	50	-5	Father	2	0
42	Indiana	10/11/2016	O	O	A	31	66	50	16	0	0	0	Father	1	0
43	Hopkins	10/17/2016	O	O	O	56	66	57	9	0	0	0	Spouse	3	1
44	Pinnacle	10/20/2016	A	A	A	24	48	29	19	85	0	85	Cousin	1	0
45	VAHD	10/25/2016	O	O	O	70	59	24	35	50	10	40	Other	3	1
46	Madison	11/2/2016	B	O	B	24	60	45	15	35	65	-30	Child	1	0
47	Pinnacle	11/2/2016	O	O	O	26	41	32	9	35	35	0	Aunt	2	1
48	Cleveland	12/1/2016	A	O	A	29	42	41	1	40	0	40	Spouse	0	0
49	WalterReed	12/1/2016	O	O	O	68	26	36	-10	0	25	-25	Father	3	1
50	Georgetown	12/7/2016	A	O	A	51	52	45	7	0	0	0	Spouse	1	0
51	UCSF	12/12/2016	A	O	A	33	34	38	-4	0	25	-25	Spouse	1	0
52	UMinn	12/13/2016	O	O	O	53	48	54	-6	0	0	0	Friend	3	1
53	UCLA	12/13/2016	A	O	A	42	46	33	13	35	25	10	Spouse	3	0
54	Maryland	12/15/2016	AB	O	AB	53	42	38	4	90	35	55	Friend	0	0
55	VAHD	12/20/2016	A	O	A	56	48	37	11	25	10	15	Friend	1	0
56	PorterAH	1/10/2017	A	O	A	35	34	41	-7	25	10	15	Sister	6	1
57	UCSF	1/10/2017	A	O	A	29	25	31	-6	50	15	35	Spouse	0	0
58	ASL	1/12/2017	A	A	A	56	51	63	-12	0	65	-65	Brother	2	1
													Totals	121	22

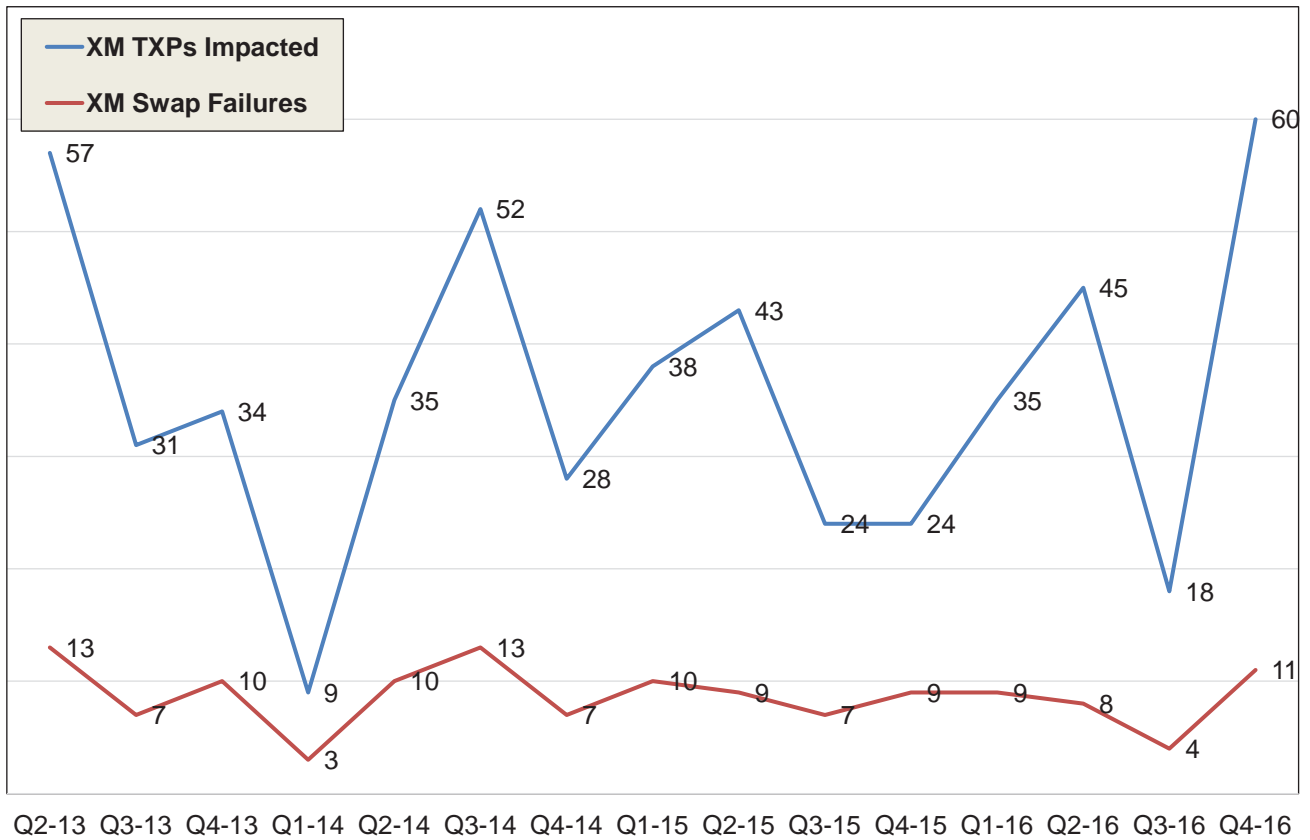
Failure Rates



Non XM Swap Failures & Transplants Impacted

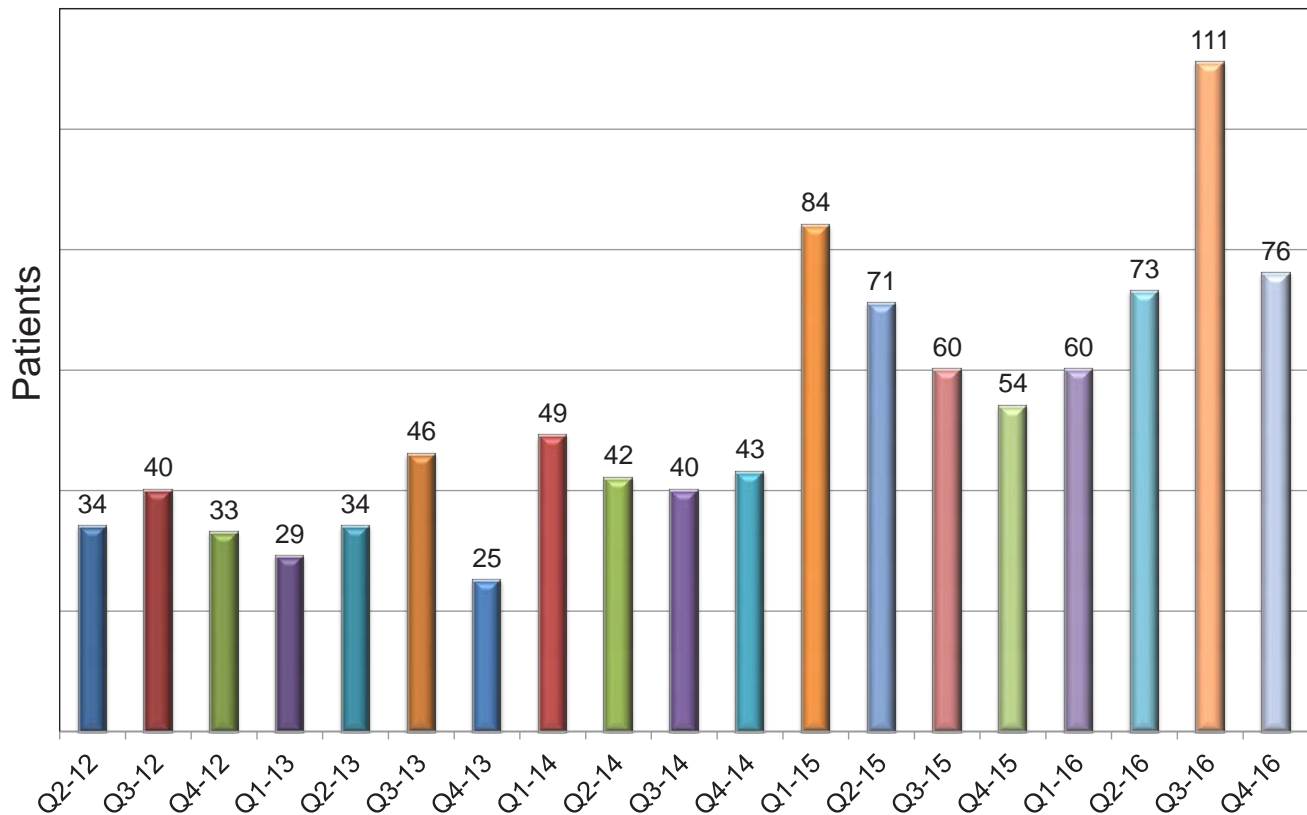


XM Swap Failures & Transplants Impacted



Patients Deleted

As of 12/31/2016



NKR Wait Times

Matching Ease	ABO Combination	PMPc
1-Very Easy	Any	> 125
2-Easy	Favorable	31 to 125
3-Hard	Favorable	1 to 30
4-Very Hard	Unfavorable	31 to 125
5-Ext Hard	Unfavorable	1 to 30
6-No Match	Any	0

ABO Combination: Patients with a non-O blood type are favorable. Patients with an O blood type who are paired to at least 1 exportable donor with an O blood type are favorable. All others are unfavorable and CHIP patients are excluded from this population.

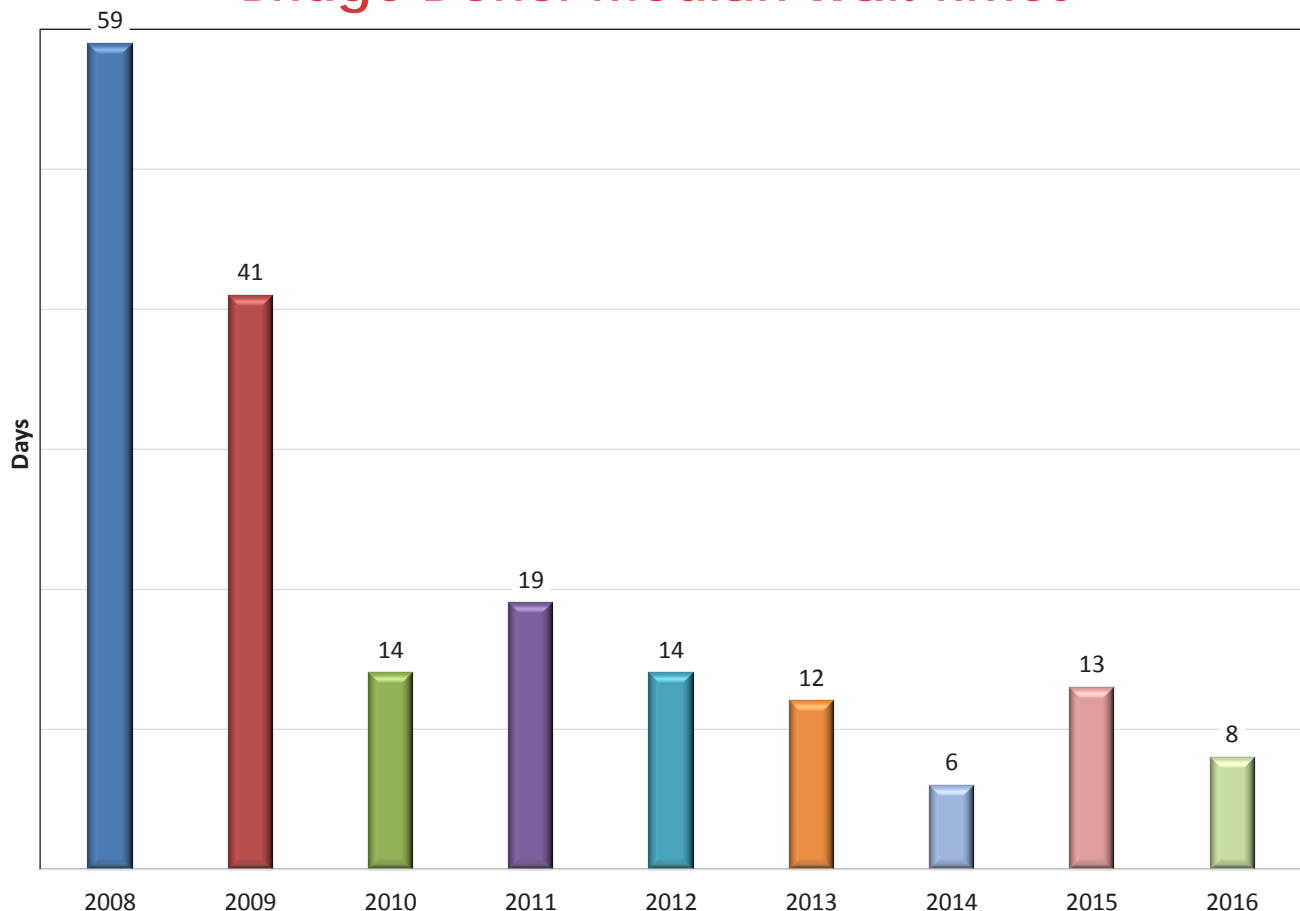
Paired Transplants Completed Between 1/1/2016 and 1/1/2017

Match Ease	Pairs	%	Mean	Median	Std Dev	Range Min	Range Max
1-Very Easy	32	10	42	42	18	8	83
2-Easy	70	23	61	50	44	2	222
3-Hard	112	36	90	52	109	4	763
4-Very Hard	49	16	267	168	232	15	925
5-Ext Hard	48	15	295	231	209	41	795
6-No Match	0	---	---	---	---	---	---
7-ALL	311	100	138	67	172	2	925

Paired Patients Waiting 6 Months or Greater as of 1/1/2017

Match Ease	Pairs	%	Mean	Median	Std Dev	Range Min	Range Max
1-Very Easy	0	---	---	---	---	---	---
2-Easy	0	---	---	---	---	---	---
3-Hard	1	1	245	245	0	245	245
4-Very Hard	15	15	307	306	55	217	404
5-Ext Hard	10	10	297	285	78	195	485
6-No Match	75	74	636	474	415	190	1715
7-ALL	101	100	550	378	388	190	1715

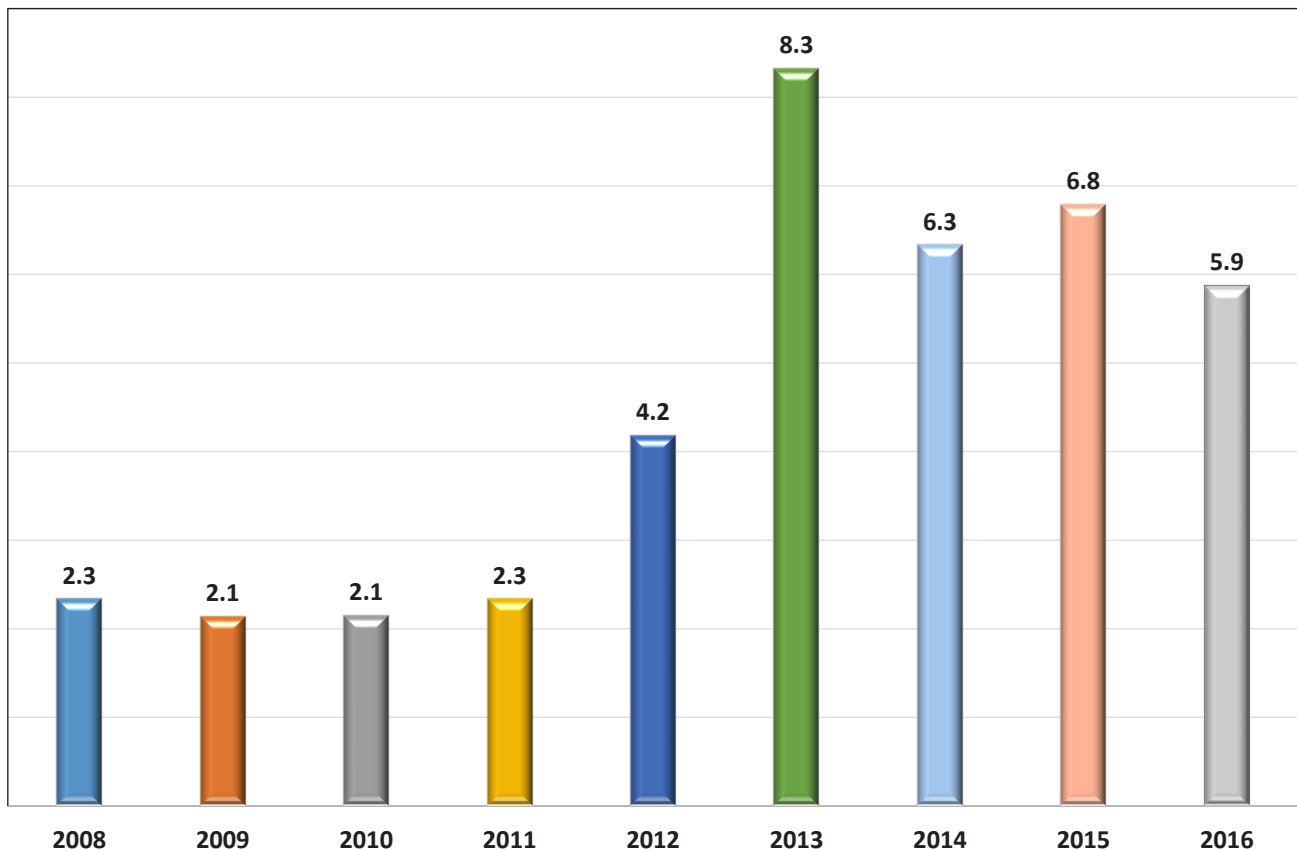
Bridge Donor Median Wait Times



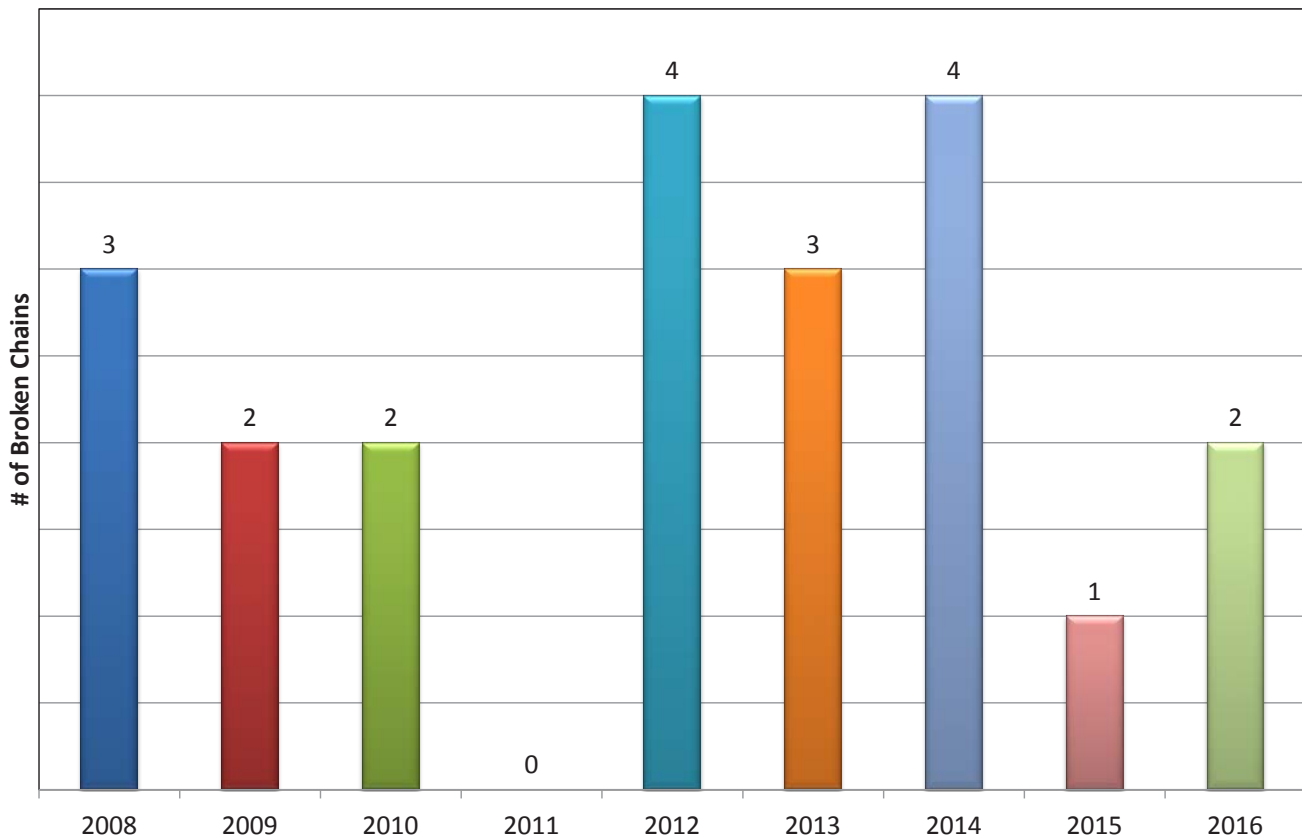
Bridge Donor Wait Times

Year	Median	Mean	Max	Min
2008	59	53	77	16
2009	41	59	187	3
2010	14	51	385	2
2011	19	23	68	4
2012	14	29	314	2
2013	12	20	92	2
2014	6	11	97	2
2015	13	26	175	2
2016	8	14	71	2

NKR Transplants per Bridge Donor



Broken Chains



Summary Report

Broken Chains & Real Time Swap Failures

Year	# Bridge Donors	# Real Time Swap Failures	# Broken Chains	% Broken Per Year
2008	9	--	3	33%
2009	29	1	2	7%
2010	61	--	2	3%
2011	75	--	0	0%
2012	54	--	4	7%
2013	37	3	3	8%
2014	49	2	4	8%
2015	53	1	1	2%
2016	68	1	2	3%
Total Bridge Donors	435	8	21	

Detail Report

Broken Chains & Real Time Swap Failures

#	Reason Given	Real Time Swap Failures	Broken Chains	Center	Date
1	Job Issues/ long wait time/ many failed XMs		✓	Cornell	5/1/2008
2	No Reason		✓	Cornell	8/21/2008
3	No Reason		✓	CPMC	11/19/2008
4	Donor sick for swap then reneged later	✓	✓	UTMC	6/9/2009
5	Medical		✓	UCSF	11/10/2009
6	Medical		✓	UCLA	3/16/2010
7	Second nuclear GFR test < 80 (79 down from 82)		✓	AGH	9/16/2010
8	No Reason		✓	MethodistTX	2/3/2012
9	No Reason		✓	UCSF	4/4/2012
10	Medical		✓	UCLA	6/28/2012
11	Medical/Surgical		✓	Washington	11/5/2012
12	Aborted donor surgery	✓	✓	CPMC	6/27/2013
13	Kidney declined by recipient surgeon	✓	✓	RWJ/UPenn	7/23/2013
14	Recipient Medical Issue	✓	✓	Porter	10/16/13
15	Kidney Declined by Recipient Surgeon	✓	✓	Porter/Jefferson	1/9/14
16	Medical		✓	UCLA	3/4/14
17	Recipient Medical Issue	✓	Loop	ChristHosp	3/11/14
18	Medical		✓	Hopkins	7/15/14
19	Medical		✓	Hopkins	10/9/14
20	Kidney Declined by Recipient Surgeon	✓	✓	Tampa/Hopkins	7/7/15
21	Kidney Declined by Recipient Surgeon	✓	--	Porter/Aurora St Lukes	3/17/16
22	Donor reneged		✓	Maryland	8/8/16
Totals		8	21		

Advanced Donation Program

Summary

Type	Cases	Add'l TXPs Facilitated	80%+ cPRA TXPs Facilitated	95%+ cPRA TXPs Facilitated
Short-Term*	20	78	27	16
Voucher**	6	35	9	4
Total	26	113	36	20

*Short-Term– At time of advanced donation the intended ADP Recipient is in need of transplant

**Voucher - At time of advanced donation the intended ADP Recipient is not in need and may never be in need of transplant.

Advanced Donation Program

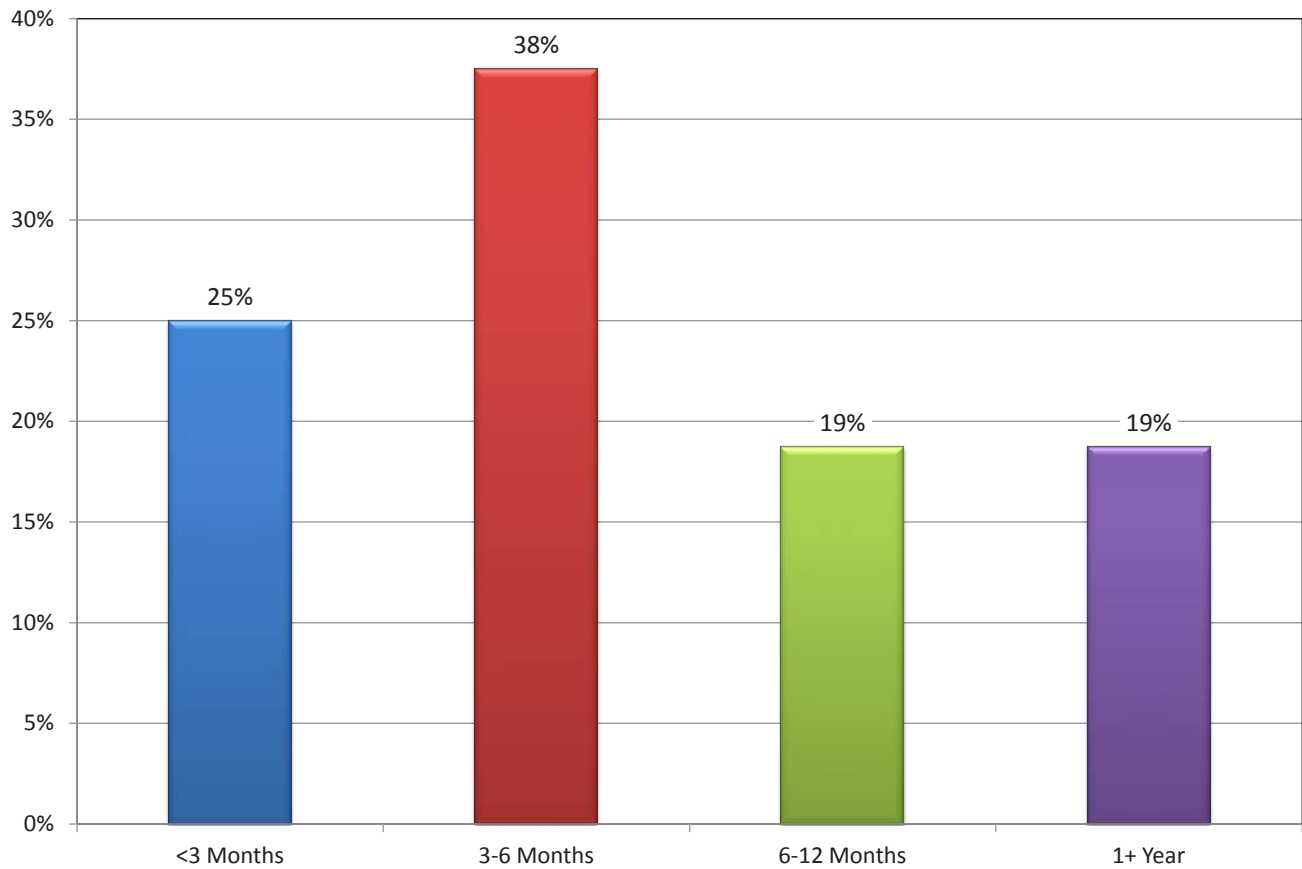
Case Details

#	ADP Donor Year	Center	Interval Between Surgeries	ADP Type	Donor ABO	Recip ABO	Recip cPRA	Additional Transplants Facilitated	Additional 80%+ cPRA Transplants	Additional 95%+ cPRA Transplants
1	2011	Barnabas	10 Days	Short-Term	B	A	0%	1	0	0
2	2011	OSU	19 Months	Short-Term	A	O	95%	3	0	0
3	2012	UCLA	5 Months	Short-Term	O	O	58%	4	1	1
4	2013	Madison	15 Months	Short-Term	A	B	0%	1	1	1
5	2013	Maryland	9 Weeks	Short-Term	A	O	0%	6	2	2
6	2014	Christiana	6 Months	Short-Term	A	A	28%	2	1	0
7	2014	Madison	8 Months	Short-Term	O	O	92%	2	1	1
8	2014	Sharp	unknownable	Short-Term	B	O	0%	1	0	0
9	2014	MassGen	2 Weeks	Short-Term	B	O	0%	3	1	0
10	2014	UCLA	unknownable	Voucher	O	A	0%	3	0	0
11	2015	UCLA	4 Months	Short-Term	O	O	96%	10	6	2
12	2015	Maryland	2 Months	Short-Term	B	O	0%	3	1	0
13	2015	Penn	unknownable	Short-Term	O	O	0%	9	4	2
14	2015	Cornell	unknownable	Voucher	A	A	87%	8	1	1
15	2015	UCLA/UCSF	8 Months	Short-Term	O	A	94%	5	2	1
16	2015	UMinn	9 Months	Short-Term	O	O	0%	2	0	0
17	2015	UCLA	1 Month	Short-Term	B	O	86%	5	2	1
18	2015	UCSF	8 Months	Short-Term	A	B	52%	2	0	0
19	2016	ASL	2 Months	Short-Term	O	O	28%	8	2	2
20	2016	Cornell	unknownable	Voucher	O	A	87%	14	6	2
21	2016	Cornell	unknownable	Voucher	A	A	0%	3	0	0
22	2016	UCSF	unknownable	Short-Term	O	O	97%	4	1	1
23	2016	ASL	unknownable	Short-Term	B	O	36%	3	0	0
24	2016	Hopkins	2 Weeks	Short-Term	A	A	75%	4	2	2
25	2016	Penn	unknownable	Voucher	A	O	0%	2	0	0
26	2016	UCSF	unknownable	Voucher	A	O	70%	5	2	1
TOTAL:								113	36	20

ADP Recipient Wait Time

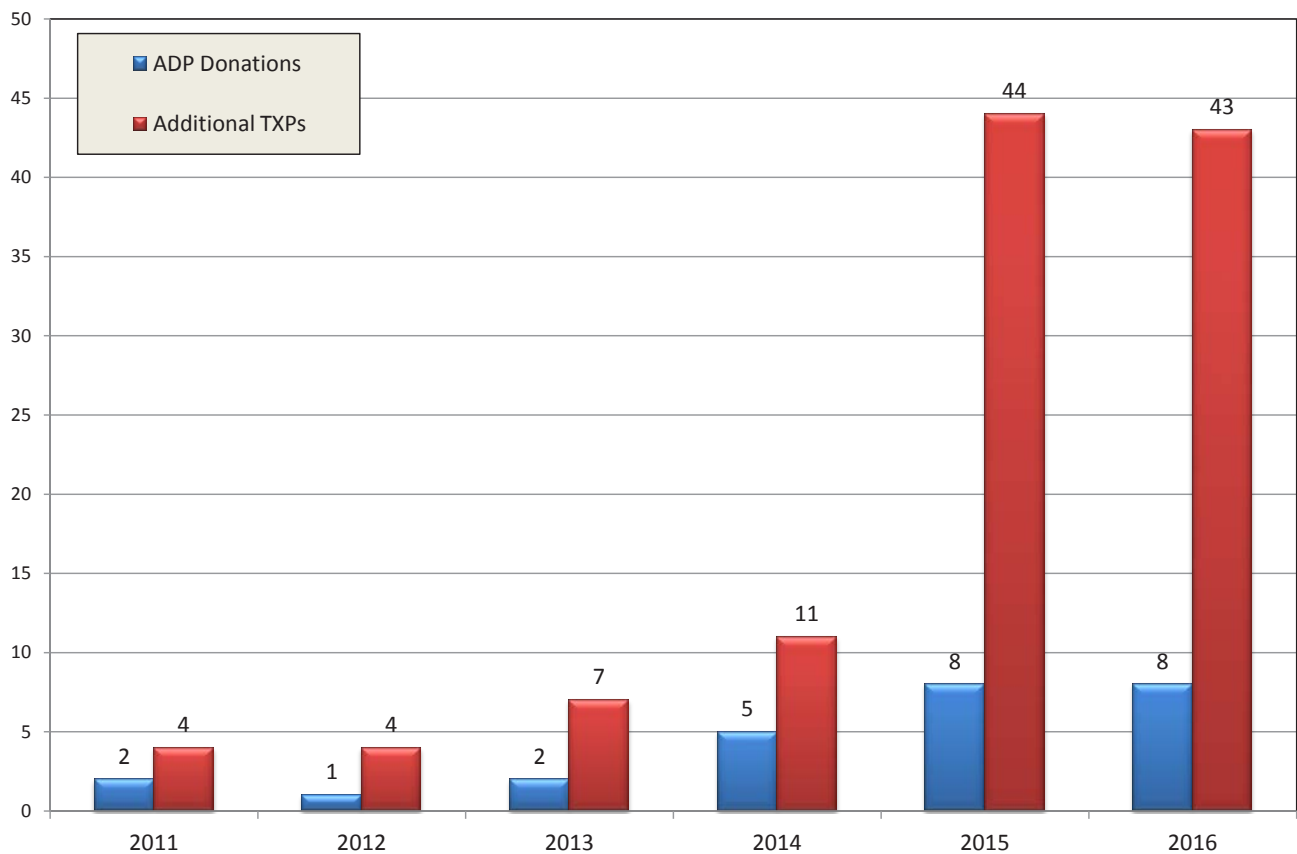
#	Center	Recipient Alias	Exportable Date	TXP Date	Wait Time in Months	Blood Type	cPRA
1	OSU	CMAS0290	3/15/2012	10/10/2013	19	O	95%
2	UCLA	R334837	5/29/2014	6/17/2015	13	O	96%
3	Madison	HANSS	7/18/2012	4/25/2013	9	O	0%
4	Madison	NEYEMRE	6/25/2014	3/26/2015	9	O	92%
5	UMinn	ROBBR70	11/13/2015	6/21/2016	7	O	0%
6	Christiana	LOPMI	1/17/2014	8/14/2014	7	A	28%
7	Maryland	DMJKR	11/14/2014	5/13/2015	6	O	0%
8	UCLA	C483244	10/24/2012	4/6/2013	5	O	58%
9	UCLA	C3751	6/8/2015	10/21/2015	5	O	86%
10	ASL	EP1929	12/30/2015	5/10/2016	4	O	28%
11	Maryland	EOSSR	8/7/2013	12/10/2013	4	O	0%
12	Madison	KRISRRE	1/30/2016	6/2/2016	4	A	95%
13	UCLA/UCSF	RCS54	4/13/2016	8/3/2016	4	A	94%
14	MassGen	GCAR	6/14/2014	8/28/2014	3	O	0%
15	UCSF	R136DC	6/10/2016	8/2/2016	2	B	52%
16	Barnabas	LAKRAU	7/13/2011	8/25/2011	1	A	0%
15	Hopkins	KATPAT	11/8/2016	11/22/2016	0	A	75%

ADP Wait Time Analysis

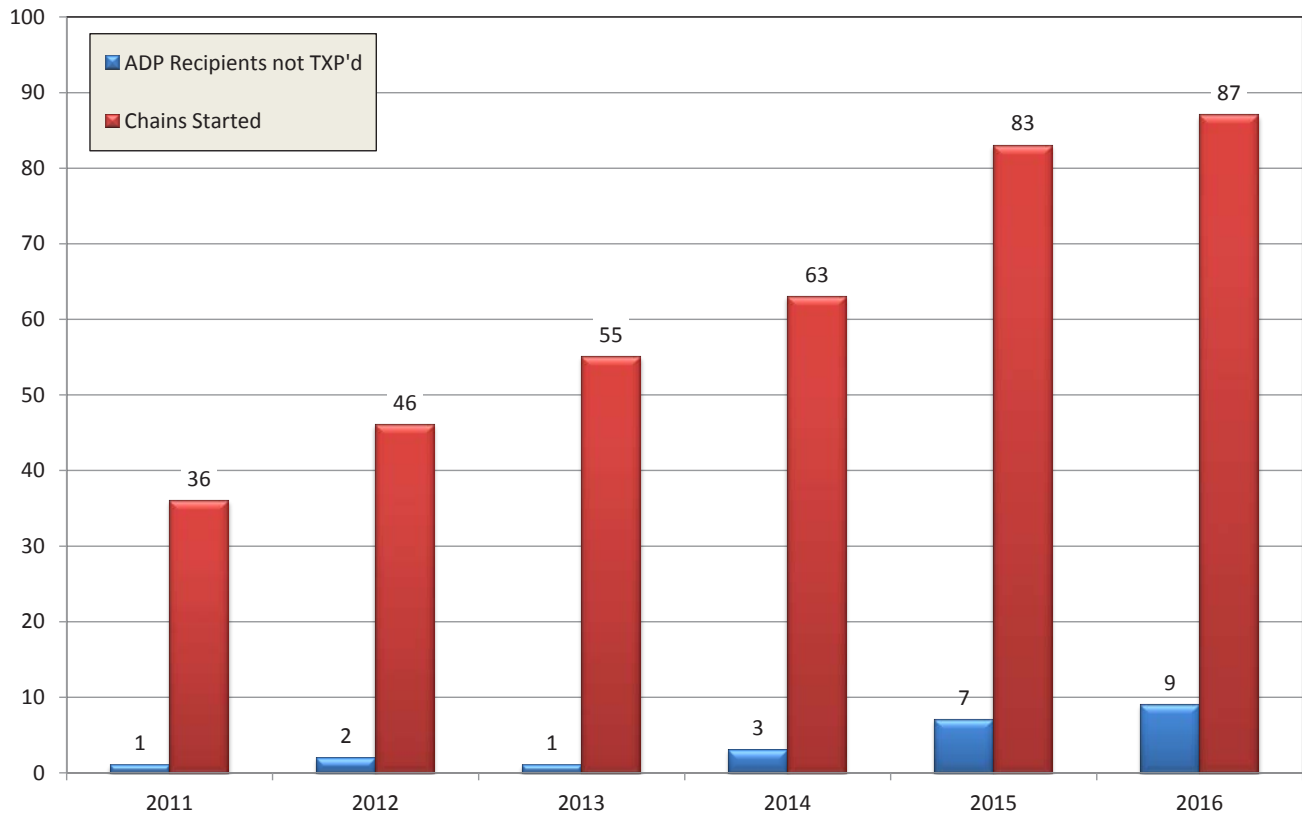


Advanced Donation Program

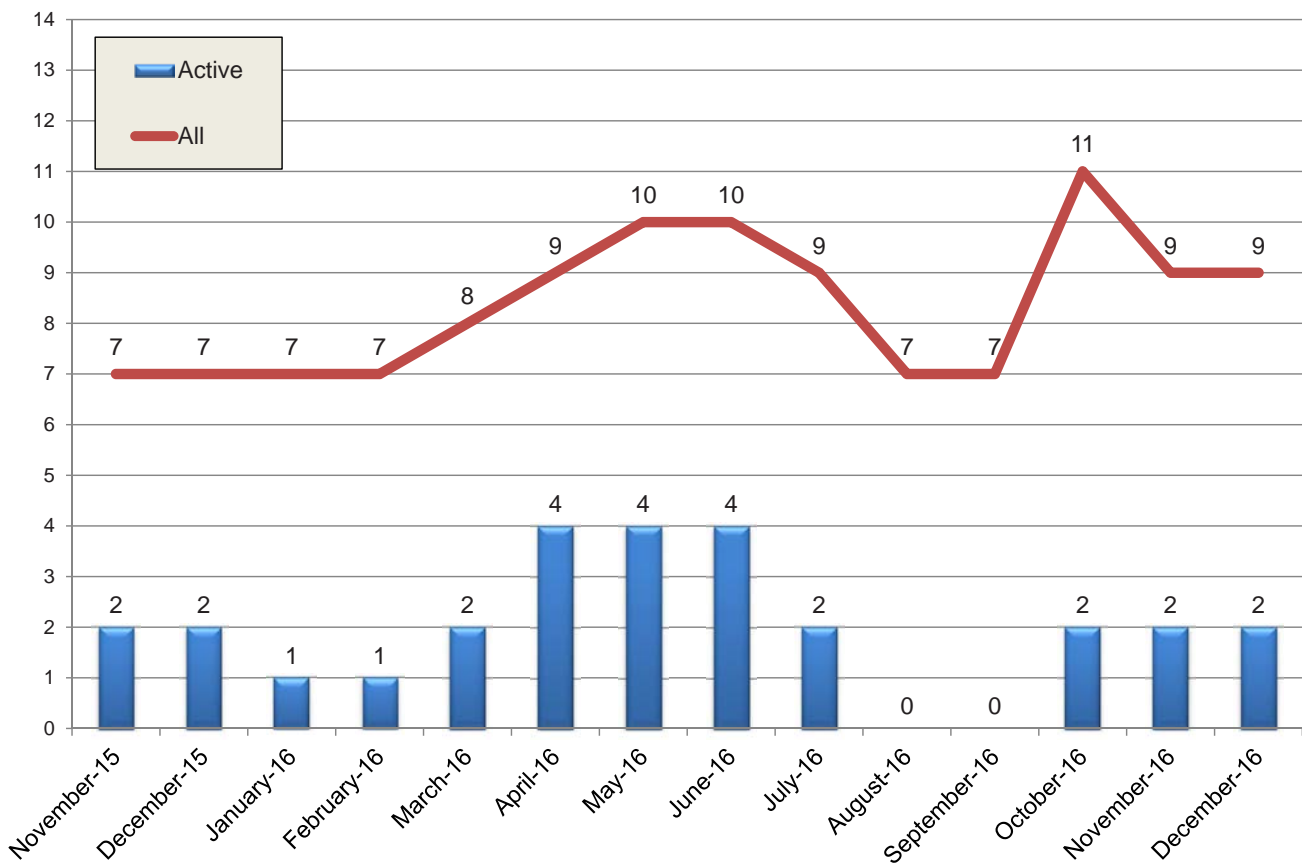
Donations & Additional TXPs Facilitated



ADP Recipients Outstanding vs. Chains Started



ADP Recipients Not Transplanted



Program Statistics

As of 12/31/2016

		2008	2009	2010	2011	2012	2013	2014	2015	2016
1	Transplants Facilitated	21	62	131	175	226	308	310	360	399
2	Paired Transplants Facilitated	21	39	91	131	164	252	255	288	315
3	Chip Transplants Facilitated	0	23	40	44	62	56	55	72	84
4	Ending Unmatched Patient Pool	80	127	120	201	241	255	279	280	215
5	Cumulative Transplants	21	83	214	389	615	923	1233	1593	1992
6	Cumulative Paired Transplants	21	60	150	280	526	777	1030	1316	1630
7	Cumulative Chip Transplants	0	23	64	109	89	146	203	277	362
8	Cumulative Paired Patient Pool	101	210	334	590	805	1062	1351	1615	1877
9	Percent of Pool Transplanted (Paired Recipients)	21%	40%	64%	66%	71%	76%	79%	84%	89%
10	Enrolled Patient Mean Wait Time (years)	3.8	2.0	0.9	1.1	1.1	1.0	0.9	0.9	0.9
11	Transplanted Patient Mean Wait Time (months)	5.1	5.3	6.0	5.0	5.1	5.4	4.8	4.1	4.7
12	Transplanted Patient Median Wait Time (months)	5.3	5.3	3.9	2.5	3.0	3.0	2.3	2.1	2.1
13	Mean cPRA of Transplanted Patients	4.1%	25.9%	34.5%	40.3%	44.1%	54.0%	48.3%	48.9%	42.8%
14	Number of Transplants Completed by cPRA									
15	100%	0	1	4	10	4	5	3	7	3
16	95-100%	0	4	12	10	29	68	41	47	39
17	80-95%	1	7	16	29	26	37	49	55	59
18	50-80%	0	5	19	27	33	46	48	42	53
19	0-50%	1	8	13	30	34	47	43	57	61
20	0%	19	37	67	69	100	105	126	152	184
21	Sub-total	21	62	131	175	226	308	310	360	399
22	Percent of Transplants Completed by cPRA									
23	100%	0%	2%	3%	6%	2%	2%	1%	2%	1%
24	95-100%	0%	6%	9%	6%	13%	22%	13%	13%	10%
25	80-95%	5%	11%	12%	17%	12%	12%	16%	15%	15%
26	50-80%	0%	8%	15%	15%	15%	15%	15%	12%	13%
27	0-50%	5%	13%	10%	17%	15%	15%	14%	16%	15%
28	0%	90%	60%	51%	39%	44%	34%	41%	42%	46%
29	Sub-total	100%	100%	100%	100%	100%	100%	100%	100%	100%
30	Number of Transplanted Patients with cPRA >80%	1	12	32	49	59	110	93	109	101
31	Percent of Transplanted Patients with cPRA >80%	5%	19%	24%	28%	26%	36%	30%	30%	26%

Program Statistics

As of 12/31/2016

		2008	2009	2010	2011	2012	2013	2014	2015	2016
32	Number of Unmatched Patients by cPRA (9/30/2016)									
33	100%				79	73	83	81	80	80
34	95-99%				73	73	61	61	53	37
35	80-95%				15	15	24	19	22	12
36	50-80%				14	11	14	13	25	13
37	0-50%				14	10	22	37	35	28
38	0%				50	59	51	68	65	45
39	Sub-total				245	241	255	279	280	215
40	Percent of Unmatched Patients by cPRA									
41	100%				32%	30%	33%	29%	29%	37%
42	95-99%				30%	30%	24%	22%	19%	17%
43	80-95%				6%	6%	9%	7%	8%	6%
44	50-80%				6%	5%	5%	5%	9%	6%
45	0-50%				6%	4%	9%	13%	13%	13%
46	0%				20%	24%	20%	24%	23%	21%
47	Sub-total				100%	100%	100%	100%	100%	100%
48	Number of Transplants Completed by Wait Time (9/30/2016)									
49	< 6 months	21	42	74	106	180	232	243	298	327
50	6-12 months	0	10	14	19	24	44	35	38	30
51	1-2 years	0	4	15	14	20	25	27	22	32
52	2+ years	0	0	2	2	2	7	5	2	10
53	Sub-total	21	56	105	141	226	308	310	360	399
54	Percent of Transplants Completed by Wait Time (9/30/2016)									
55	< 6 months	100%	75.0%	70.5%	75.2%	79.6%	75.3%	78.4%	82.8%	82.0%
56	6-12 months	0.0%	17.9%	13.3%	13.5%	10.6%	14.3%	11.3%	10.6%	7.5%
57	1-2 years	0.0%	7.1%	14.3%	9.9%	8.8%	8.1%	8.7%	6.1%	8.0%
58	2+ years	0.0%	0.0%	1.9%	1.4%	0.9%	2.3%	1.6%	0.6%	2.5%
59	Sub-total	100%	100%	100%	100%	100%	100%	100%	100%	100%
60	Total Chains Started	4	9	28	36	46	55	63	83	99
61	Total Loops Completed	0	3	2	3	12	24	17	15	7
62	Number of broken chains	3	2	2	0	4	3	4	1	2
63	Bridge Donors Held (2016)	9	29	61	75	54	37	49	53	68
64	Percent of broken chains	33%	7%	3%	0%	7%	8%	8%	2%	3%



P.O. Box 460 • Babylon, NY 11702-0460

www.kidneyregistry.org

800-936-1627